

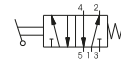
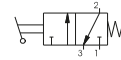
**Lever lateral - Spring**

Coding: 212.1.9.1

**Operational characteristics**

Fluid	Filtered air. No lubrication needed, if applied it shall be continuous
Max working pressure (bar)	10
Temperature °C	-5 ÷ +70
Flow rate at 6 bar with Δp=1 (NI/min)	3500
Orifice size (mm)	15
Working ports size	G1/2"

TYPE	
1	32 = 3 ways
	52 = 5 ways

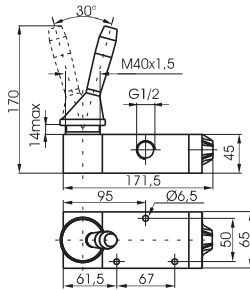


3 ways



Weight 1480 g

212.32.9.1

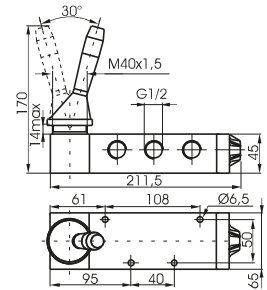


5 ways



Weight 1765 g

212.52.9.1



AIR DISTRIBUTION

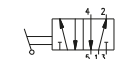
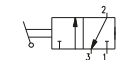
**Lever lateral 2 positions**

Coding: 212.1.9

**Operational characteristics**

Fluid	Filtered air. No lubrication needed, if applied it shall be continuous
Max working pressure (bar)	10
Temperature °C	-5 ÷ +70
Flow rate at 6 bar with Δp=1 (NI/min)	3500
Orifice size (mm)	15
Working ports size	G1/2"

TYPE	
1	32 = 3 ways
	52 = 5 ways

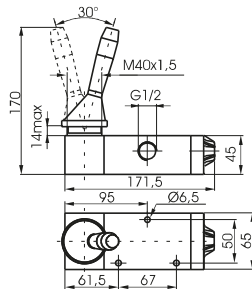


3 ways



Weight 1460 g

212.32.9

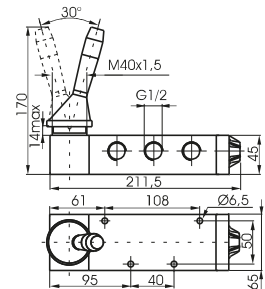


5 ways



Weight 1745 g

212.52.9



**Lever lateral spring centre 3 positions**

Coding: 212.53.F.9.1

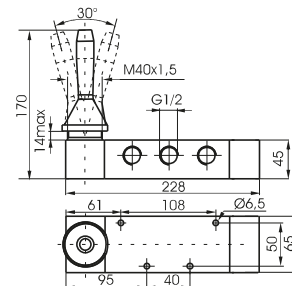
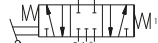
**Operational characteristics**

Fluid	Filtered air. No lubrication needed, if applied it shall be continuous
Max working pressure (bar)	10
Temperature °C	-5 ÷ +70
Flow rate at 6 bar with Δp=1 (NI/min)	3000
Orifice size (mm)	15
Working ports size	G1/2"

FUNCTION	
F	31 = Closed centres
	32 = Open centres



Weight 2100 g

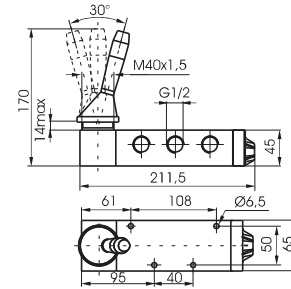
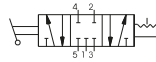


**Lever lateral 3 positions detent**

Coding: 212.53.9

Operational characteristics	
Fluid	Filtered air. No lubrication needed, if applied it shall be continuous
Max working pressure (bar)	10
Temperature °C	-5 ÷ +70
Flow rate at 6 bar with $\Delta p=1$ (l/min)	3000
Orifice size (mm)	15
Working ports size	G1/2"

FUNCTION	
31	= Closed centres
32	= Open centres



Weight 1765 g