

EXTENSIONS 1" THREAD

P/N OE38092

Top connector ▶ thread F 1" x F 1" allows to connect pump M 1" thread with extensions M 1" thread



P/N OE10/21

Extension ø 34 mm ▶ thread M 1"G x M 1"G ▶ 460 mm suitable for modular and extendable pumps with F 1" connection

P/N OE10/22

Extension ø 34 mm ▶ thread M 1"G x M 1"G ▶ 660 mm suitable for modular and extendable pumps with F 1" connection

P/N OE10/23

Extension ø 34 mm ▶ thread M 1"G x M 1"G ▶ 960 mm suitable for modular and extendable pumps with F 1" connection

P/N OE10/24

Extension ø 34 mm ▶ thread M 1"G x M 1"G ▶ 1260 mm suitable for modular and extendable pumps with F 1" connection

P/N OE10/25

Extension ø 34 mm ▶ thread M 1"G x M 1"G ▶ 1460 mm suitable for modular and extendable pumps with F 1" connection

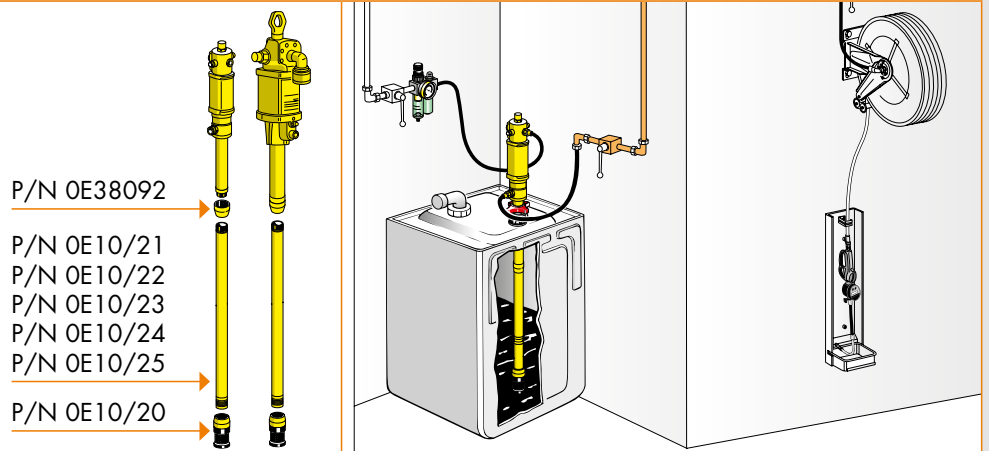


P/N OE10/20

Foot valve with filter ▶ F 1" thread suitable to fit ø 34 extensions M 1"G thread

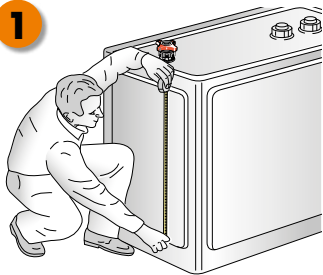


PUMP INSTALLATION WITH CUSTOMISABLE SUCTION TUBE



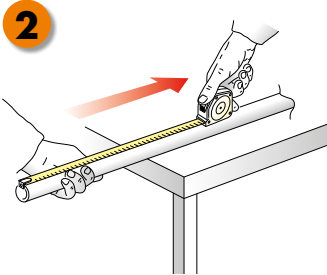
EXTENDABLE PUMPS SUCTION TUBE 1"

1



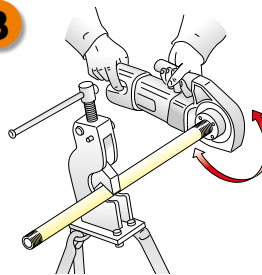
Obtain a water pipe (normally available on the market) ø 1" and thickness 2,5 mm

2



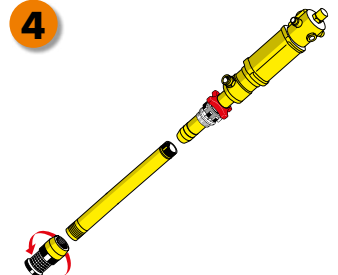
Cutting the length suitable for the container

3



Thread the 2 ends with 1" gas male

4



Screw the threaded pipe between the pump and the foot valve (P/N OE10/20)