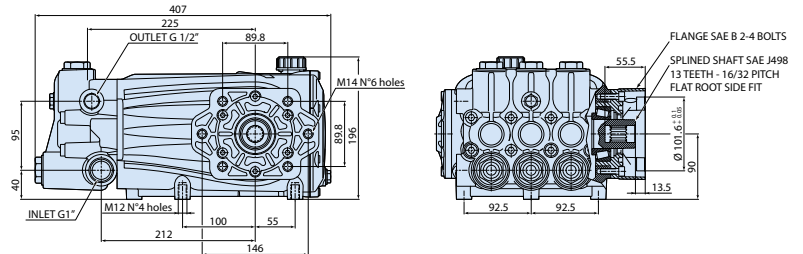


366 Series



Pompa nella versione compatta con albero femmina scanalato per motori idraulici con albero maschio scanalato 13T.

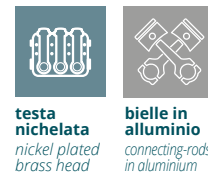
Pump with direct drive flange and hollow shaft for 13T splined shaft motors.



N version

MOD	COD	MAX		MAX		MAX		kg NET
		l/min	gpm	bar	psi	hp	kW	
RTX + F56								
RTX 30.300 C+F56	28131	30	7,92	300	4351	24	18	1450 32,5
RTX 50.300 C+F56	28132	50	13.20	300	4351	40	30	1450 32,5
RTX 60.300 C DX+F56	27892	60	13,2	300	4351	47	35	1450 32,5
RTX 70.200 C DX+F56	27894	70	15,4	200	2900	37	28	1450 32,5
RTX 85.150 C DX+F56	27873	85	18,7	150	2175	34	26	1450 32,5
RTX 100.120 C+F56	28133	100	26,41	120	1740	47	35	1450 32,5
RTX 150.100 C DX+F56	27699	150	33	100	1450	30	22	1450 35
RTX 30.500C+F56	28134	30	7,92	500	7251	30	22	1450 32,5

A richiesta testa nichelata · Nickel plated head available.



testa nichelata
nickel plated brass head

bielle in alluminio
connecting-rods in aluminium



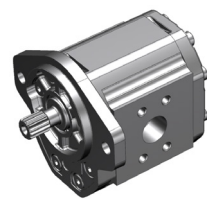
366 Series

Pompa con F.56 e albero scanalato 13T per accoppiamento diretto.
Pump with F.56 flange and splined shaft for direct drive flange.

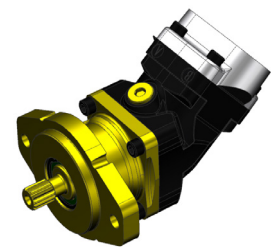


**GEAR MOTOR VERSIONS
UP TO 40 hp (30 kW)**

**PISTON MOTOR VERSIONS
UP TO 40 hp (30 kW)**



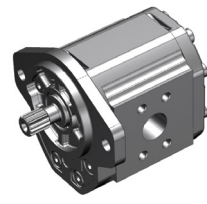
MOTORE A INGRANAGGI 44 cc/rev code 45222
GEAR MOTOR 44 cc/rev code 45222



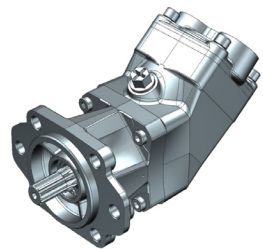
MOTORE A PISTONI 34 cc/rev code 45221
PISTON MOTOR 34 cc/rev code 45221

UP TO 47 hp (35 kW)

UP TO 47 hp (35 kW)



MOTORE A INGRANAGGI 90 cc/rev code 45223
GEAR MOTOR 90 cc/rev code 45223



MOTORE A PISTONI 64 cc/rev code 45230
PISTON MOTOR 64 cc/rev code 45230