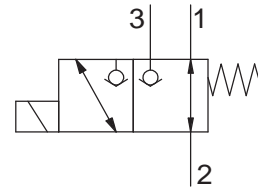


3 WAY 2 POSITION ELECTRIC POPPET VALVE, DIRECT ACTING

- Flow **30 l/min**
- Max working pressure in 3:2:1 **350 bar**
- Leakage **0,25 cc/min**
- Seals **NBR and PTFE**
- Cartridge tightening torque **40 Nm**
- Ring nut tightening torque **5 Nm**
- Weight (with coil) **0,56 Kg**
- Cavity **C330000** page 220
- Body **171312** page 192
- Coil (to be ordered separately) **09800** page 180



Note: proportional coil 09800 applied to provide the operating needed power (ED 50%).
For ED 100% contact NEM customer care service.

