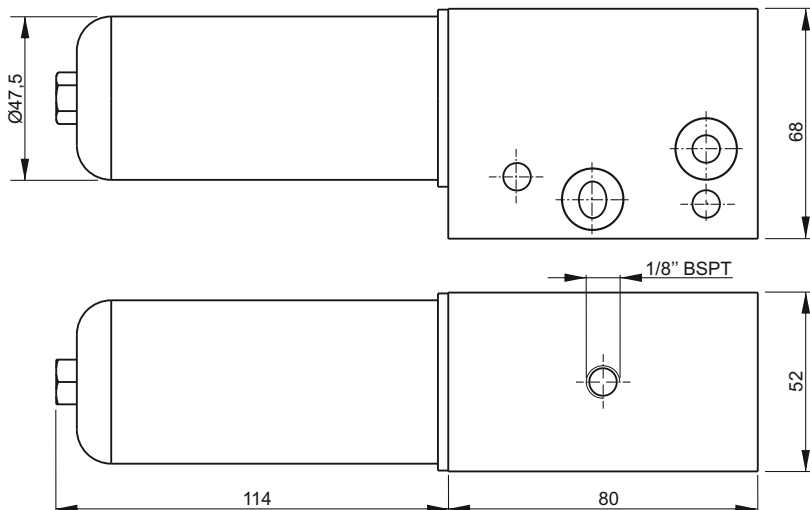


RETURN LINE FILTER MODULAR MANIFOLD



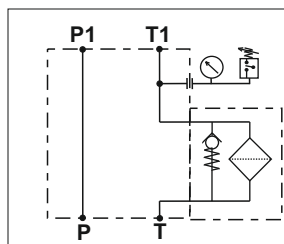
Fixing system: 2xM8 tie-rods
steel class 8.8 or above



Main features

Opening valve pressure	210 bar
Max flow	20 l/min
Filtration setting	15 µ
Oil temperature	-30 ÷ + 80 °C
Weight	0,87 kg

Hydraulic scheme



Spare part code

E60403020 — Modular manifold with return filter on T

Replacement cartridge part code

FO201385

Note: Recommended tightening torque for M8 bolts: 16 Nm

Note: code does not include the MIR40 pressure gauge or F4 pressure switch

Options

Pressure gauge for return filter manifold

Weight: 0,1 Kg

Spare part code	
MIR4010	

Pressure switch

Setting range	0,2 ÷ 2,5 bar
Protection degree	IP 65
Hysteresis	10 ÷ 15 %
Weight	0,05 Kg
Max load	0,5 A at 250 VAC
Electric switch	NO/NC

	A
F4R0M3	1/8" BSPP

Spare part code	
F4R0M3	