

**1****2****3****4****2 1 3****0 8 0****0 1****0 6 4****Tipo flangia / Flange type****213** : SAE J744 SAE B 2H-4H**214** : SAE J744 SAE C - 4H**Cilindrata / Displacement (cc)****040****047****055****064****084****108****130****Albero / Shaft****074** : SAE B - 13T 16/32**077** : SAE BB - 15T 16/32**080** : SAE C - 14T 12/24**091** :  $\varnothing$  25,4 (1") - SAE J744**094** :  $\varnothing$  31,7 (1,25") - SAE J744**Connessioni / Portings****01** : BSPP REAR 40°**05** : UN REAR 40°**13** : SAE 6000 REAR 90° - M

Flangia Flange	Tipo / Type		SAE B 2H - 4H				SAE C 4H						
	Codice / Code		213				214						
	Cilindrata Displacement		040	047	055	064	040	047	055	064	084	108	130
Albero Shaft	Codice Code												
	<b>2</b> ↓												
	047	K30 - ø30 DIN 6885											
	050	K35 - ø35 DIN 6885											
	074	SAE B - 13T 16/32	X	X	X	X							
	077	SAE BB - 15T 16/32	X	X	X	X							
	080	SAE C - 14T 12/24					X	X	X	X	X	X	
	081	SAE CC - 17T 12/24											
	083	SAE C - 21T 16/32											
	091	ø 25,4 (1") - SAE J744	X	X									
094	ø 31,7 (1,25") - SAE J744					X	X	X	X	X	X		
095	ø 38,1 (1,5") - SAE J744												
Conessioni Portings	Codice Code												
	<b>3</b> ↓												
	01	BSPP REAR 40°	X	X	X	X	X	X	X	X	X	X	
	03	BSPP SIDE											
	05	UN REAR 40°	X	X	X	X	X	X	X	X	X		
	06	UN 40° + sSIDE											
	07	UN SIDE											
	11	SAE 6000 REAR 40° - M											
	13	SAE 6000 REAR 90° - M	X	X	X	X							
	14	SAE 6000 SIDE - M											
	21	SAE 6000 REAR 40° - U											
	24	SAE 6000 - SIDE U											
25	SAE 6000 - SIDE U + FLUSHING VALVE												
41	UNF 40° + SIDE												

X = Disponibili / Available

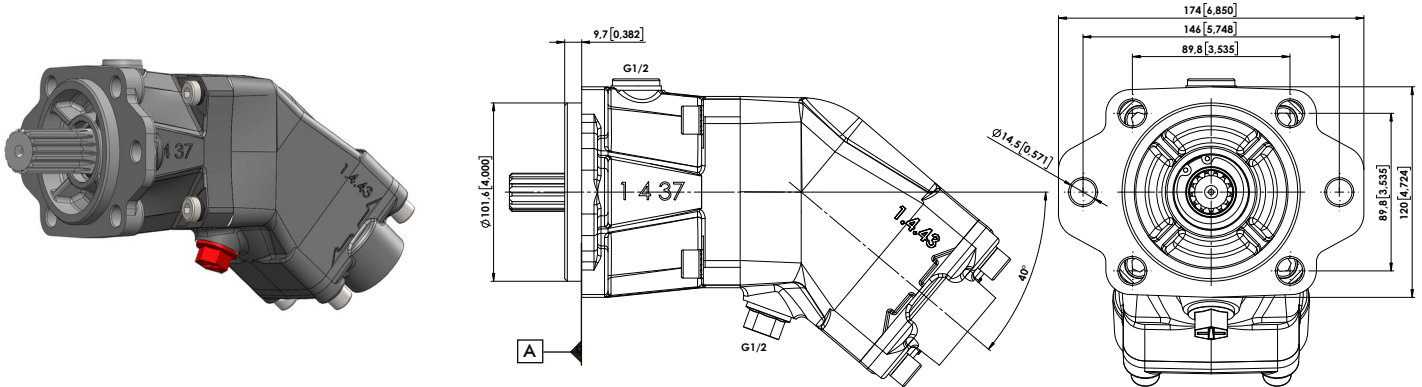


X

Questo albero può avere delle limitazioni di coppia a seconda dell'applicazione. Per maggiori informazioni contattare OMFB  
 This shaft may have torque limitations depending on the application.  
 For more information please contact OMFB

**Ingombro / Dimensions**

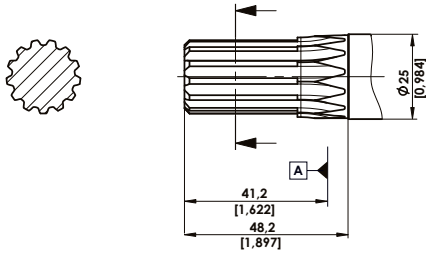
Flange code **213**



**Alberi/ Shafts**

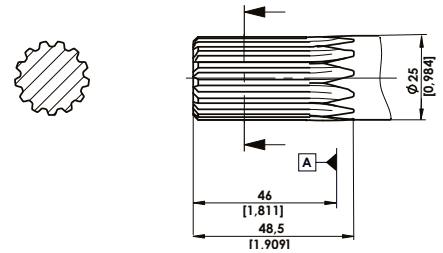
**074**

SAE B - 13T 16/32  
Splined shaft



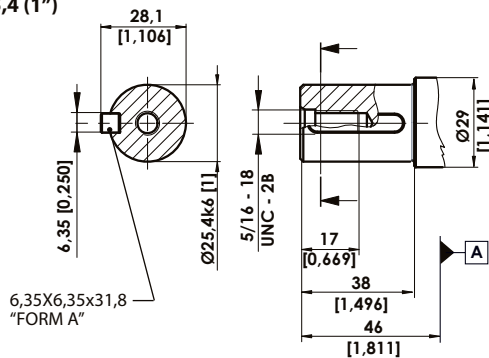
**077**

SAE BB - 15T 16/32  
Splined shaft



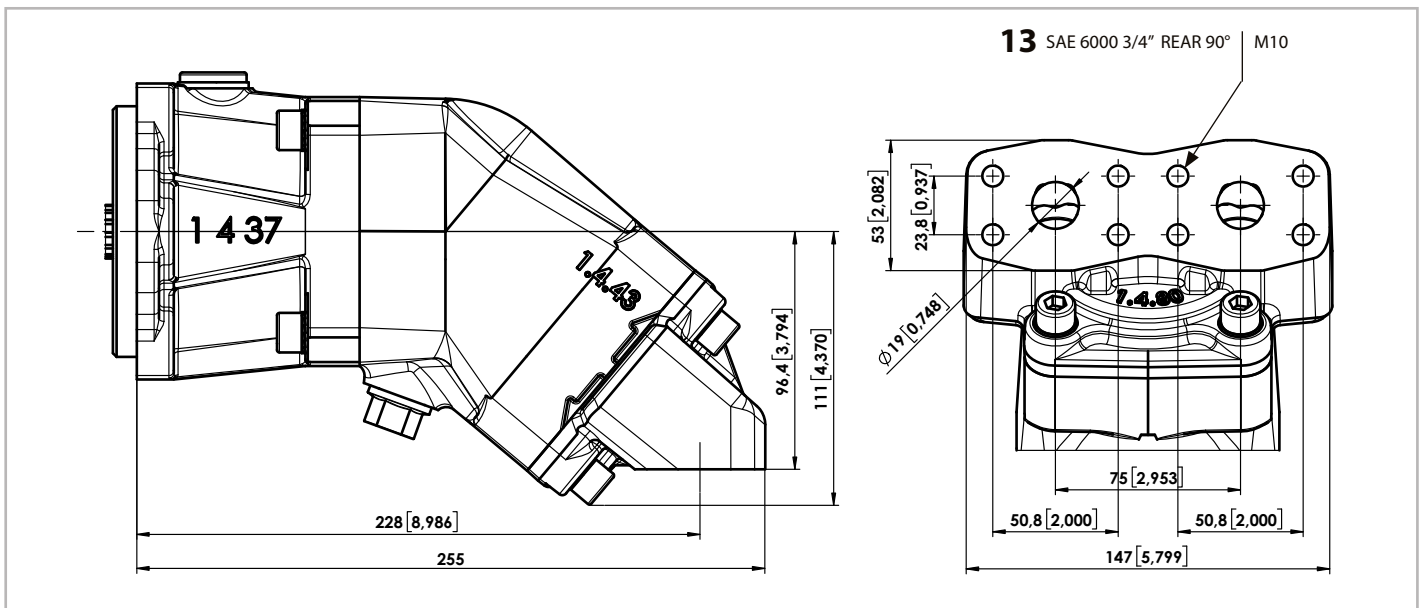
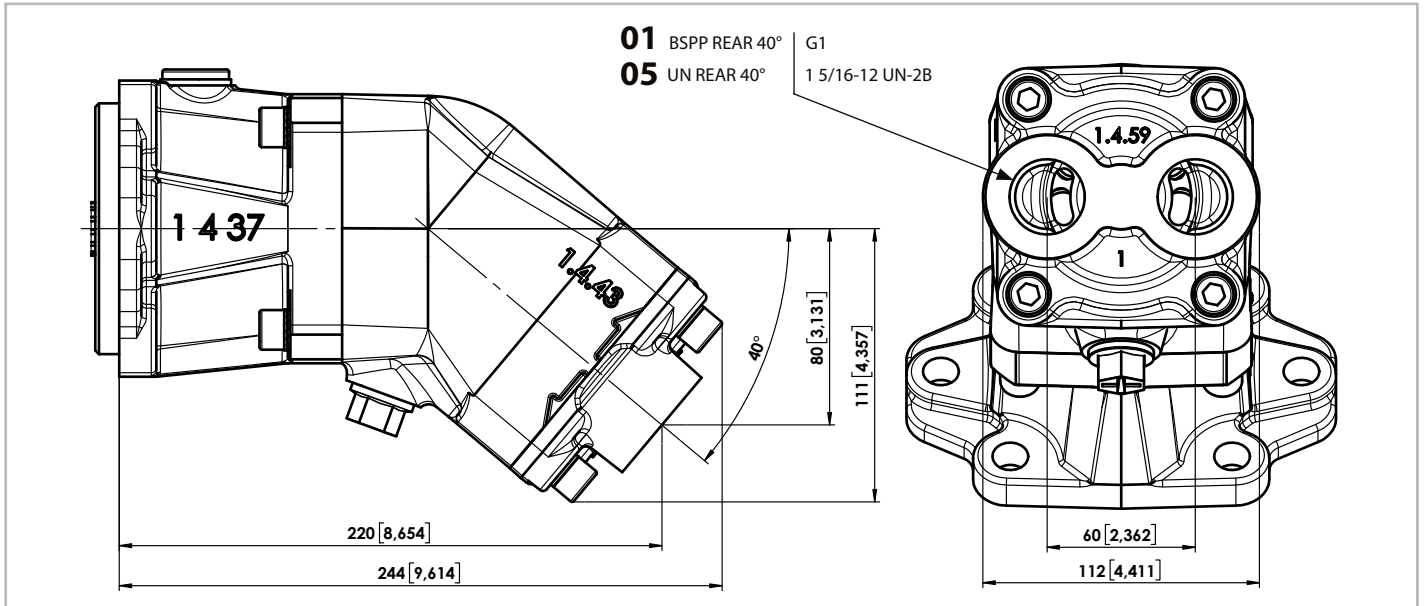
**091**

SAE J744 Ø25,4 (1")  
Cylindrical  
keyed shaft  
SAE J744



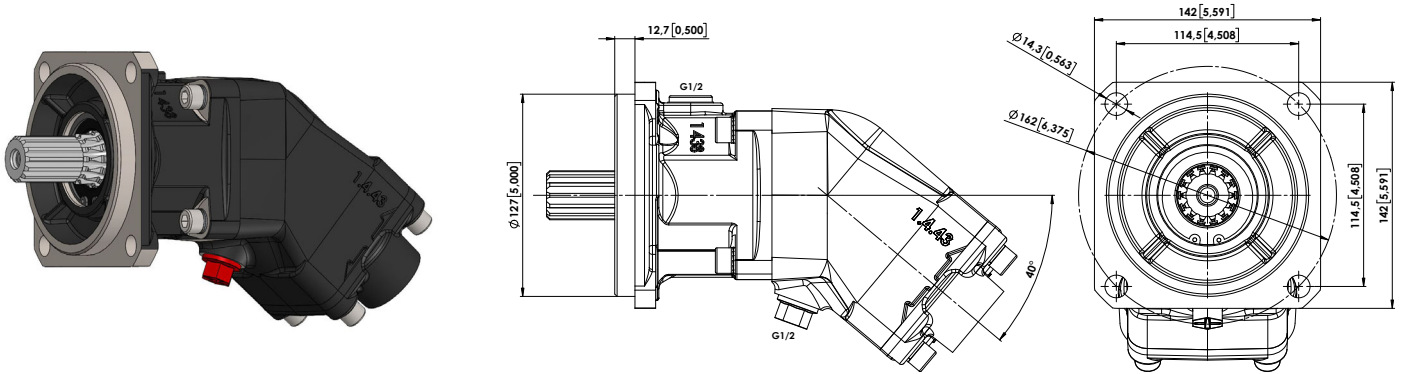
Questo albero può avere delle limitazioni di coppia a seconda dell'applicazione. Per maggiori informazioni contattare OMFB  
This shaft may have torque limitations depending on the application.  
For more information please contact OMFB

Conessioni/ Portings



**Ingombro / Dimensions**

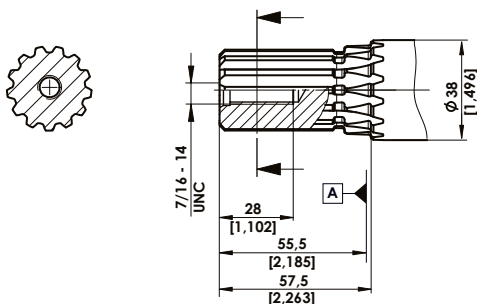
Flange code **214**



**Alberi/ Shafts**

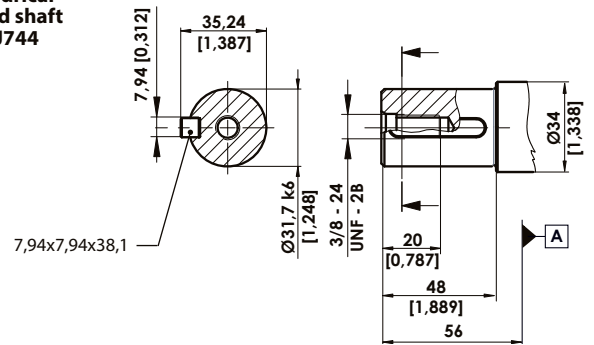
**080**

SAE C - 14T 12/24  
Splined shaft



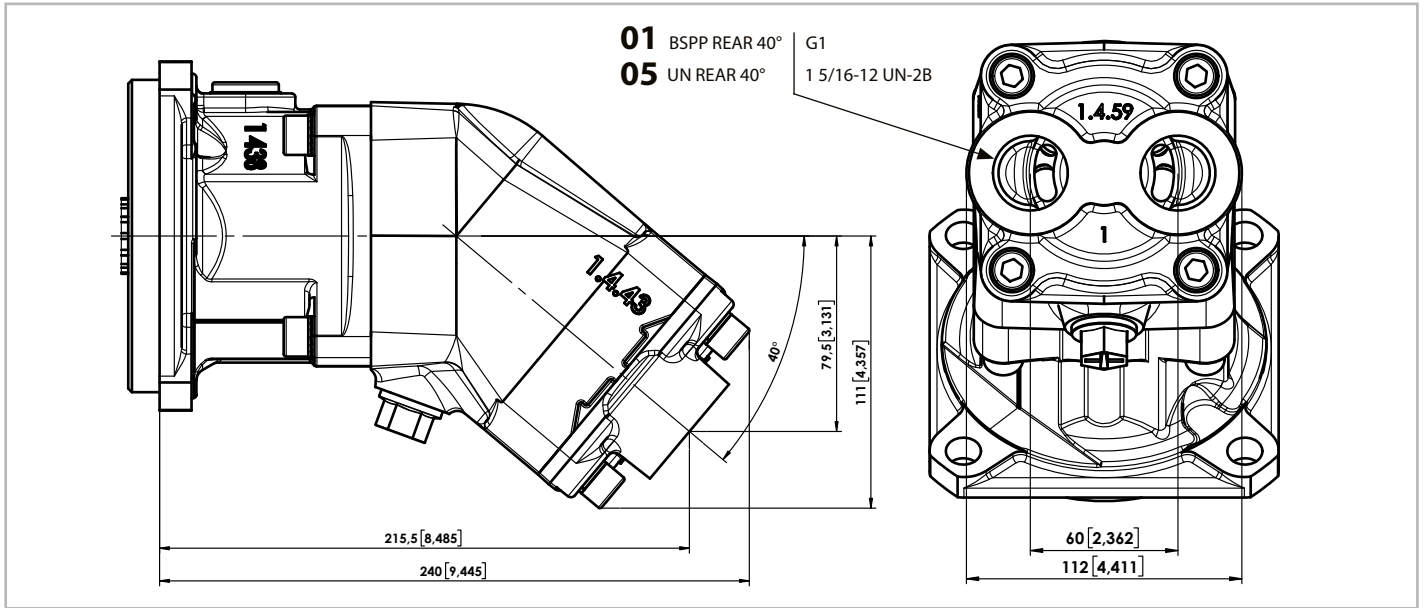
**094**

SAE J744  $\varnothing 31,7$  (1,25")  
Cylindrical  
keyed shaft  
SAE J744



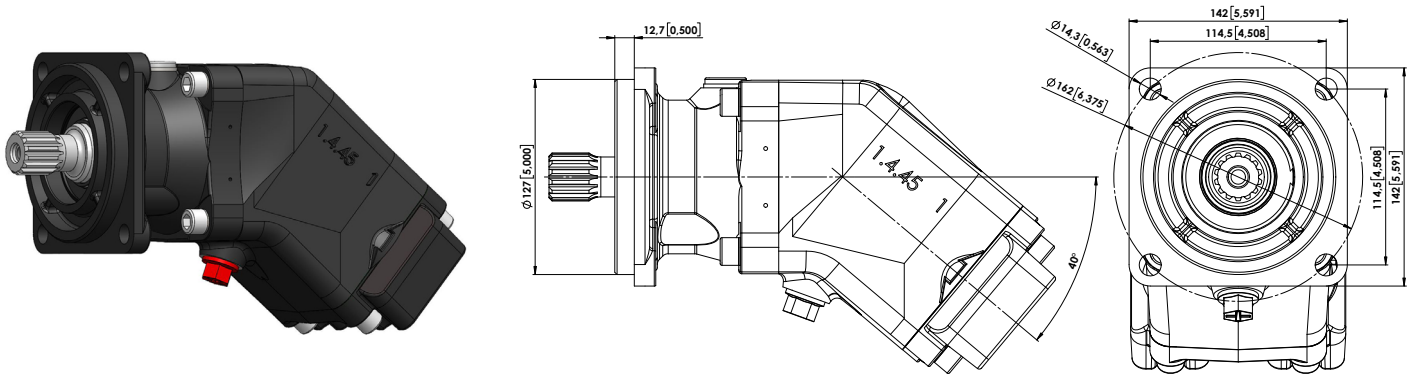
Questo albero può avere delle limitazioni di coppia a seconda dell'applicazione. Per maggiori informazioni contattare OMFB  
This shaft may have torque limitations depending on the application.  
For more information please contact OMFB

**Conessioni/ Portings**



**Ingombro / Dimensions**

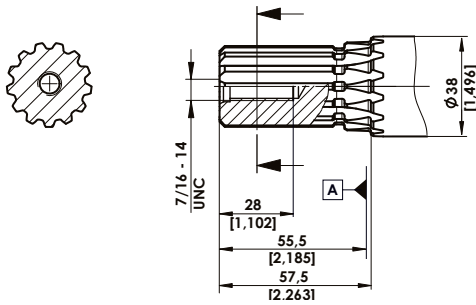
Flange code **214**



**Alberi/ Shafts**

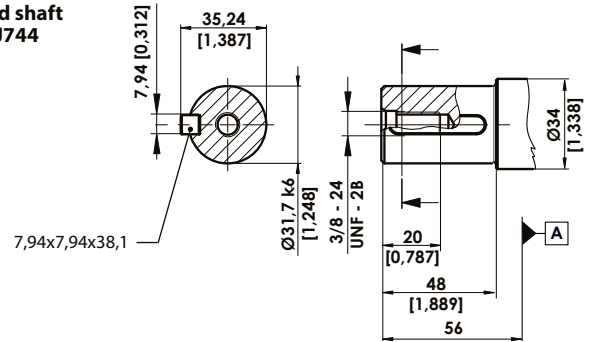
**080**

SAE C - 14T 12/24  
Splined shaft



**094**

SAE J744  $\phi 31,7$  (1,25")  
Cylindrical  
keyed shaft  
SAE J744



Questo albero può avere delle limitazioni di coppia a seconda dell'applicazione. Per maggiori informazioni contattare OMFB  
This shaft may have torque limitations depending on the application.  
For more information please contact OMFB

**Conessioni/ Portings**

