

MICRO CENTRAL MANIFOLD

A single **Micro die-cast aluminium** central manifold in 4 different executions is the core part to realize extremely small power units in industrial, mobile and marine fields. It features the **highest integration and flexibility** on the market, with up to **seven devices** which can be fitted inside, plus a wide selection of manifold blocks which can be connected to cartridge type valves or NG3 valves

The **interface** to hose fittings or external additional manifolds is **unified**. The P and T port tappings for the hose fittings are **1/4" BSP** (International standard) or **9/16-18UNF** (SAE06) for the American standard



Lateral cavities are according **SAE08 standard** (3/4-16UNF), except for the main check valve (5/8-18UNF) and main relief valve (M14)

The **interfaces** to tanks and motors are **unified**. All plastic or steel tanks have the same interface and can be easily swapped. All AC or DC motors can be fitted easily either directly to the central manifold or through adaptor flanges (B14 IEC standard motors)

Clockwise (our standard) or counterclockwise or bidirectional rotation tang drive shaft **standard gear pumps** can be mounted

The maximum flow is **6 l/min**, with a **low pressure drop**, and maximum motor power is 2,2kW, well above the average of other alternative products on the market

Q & A

Which micro central manifold execution should I choose?

MB type is the most widely applied for single acting or double acting circuits. M4 execution is recommended for compact and cost effective double acting circuits with a single cylinder while MR is for bidirectional pump and may integrate double relief valve, double pilot operated check valves and also an extra pilot operated check valve to ensure that differential cylinder circuits function properly (this extra valve discharges excess return flow from the piston side of the cylinder).

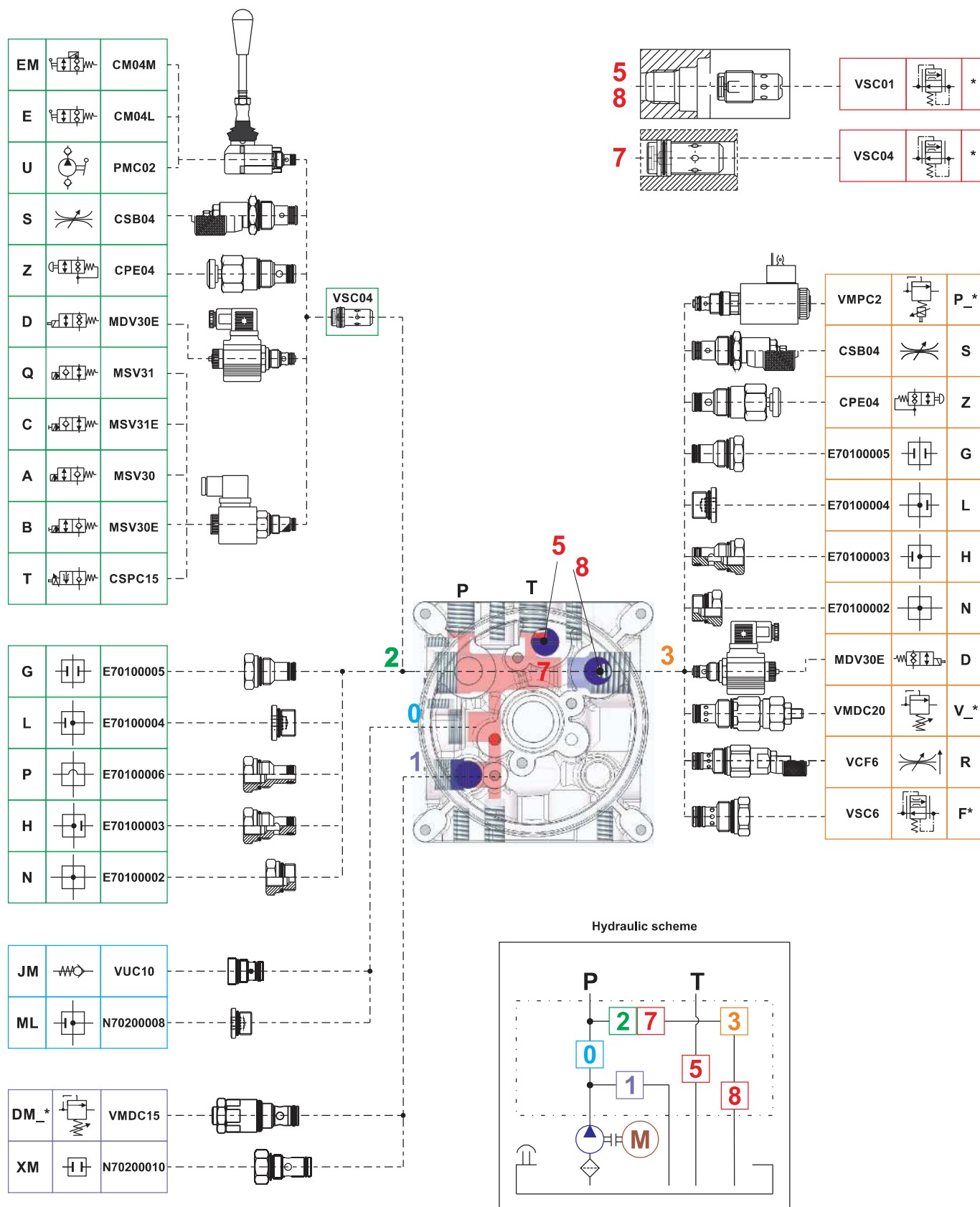
Do I need special tools to assemble the components within the central manifold?

No. All valves are screw-in type in a single piece construction (no loose nuts, washers, springs,... difficult to assemble and falling apart). The components are easily assemblable with simple hand tools and hexagon keys.

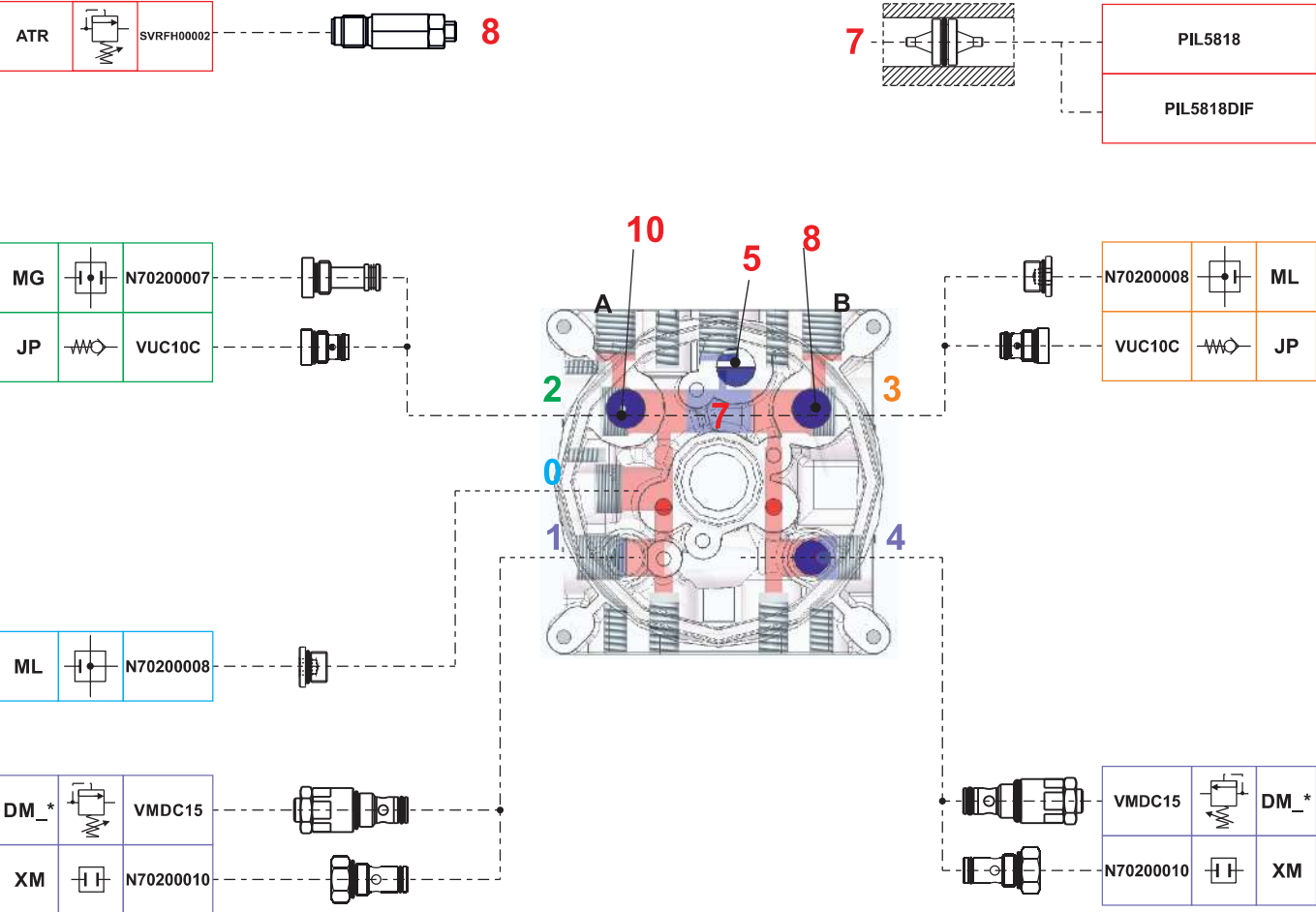
Is the central manifold available as a loose component?

Yes. We can supply either fully assembled and tested power packs or kits of loose components, which can be kept in stock by our worldwide distributors and easily assembled to satisfy local market demand quickly and effectively. Central manifolds and core other components are 100% tested even when supplied as loose parts.

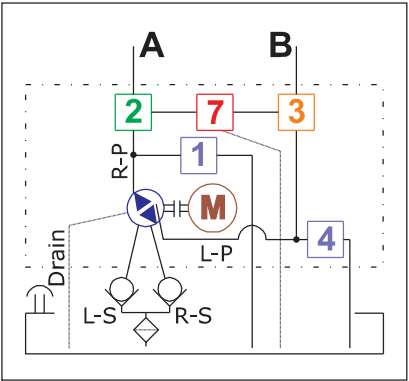
MICRO CENTRAL MANIFOLD «MB»



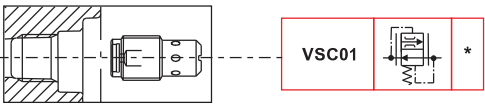
MICRO CENTRAL MANIFOLD «MR»



Hydraulic scheme



MICRO CENTRAL MANIFOLD «M4»

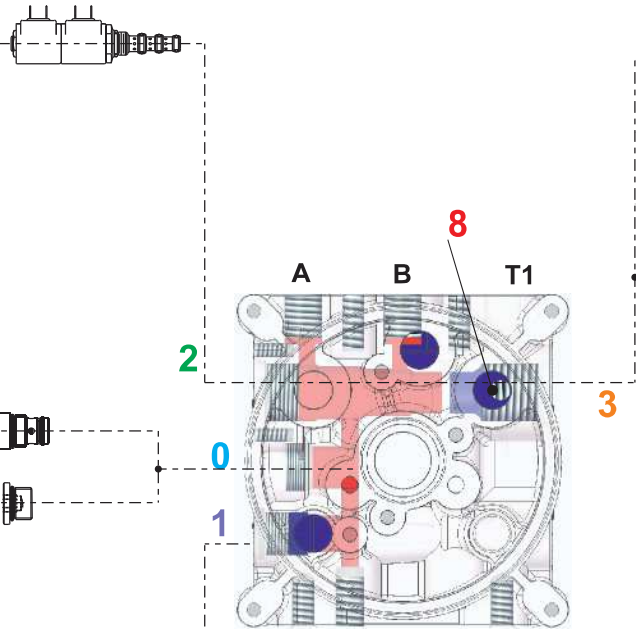


4VA2		MSV4VA2
4VB2		MSV4VB2
4VC2		MSV4VC2
4VE2		MSV4VE2
4VA11C		MSV4VA11C

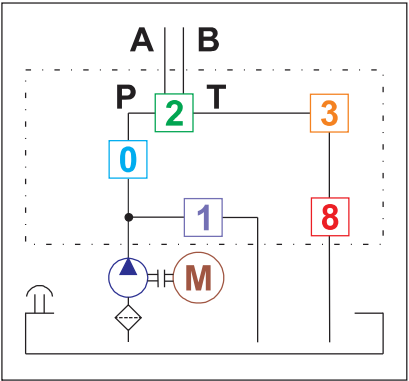
JM		VUC10
ML		N70200008

DM_*		VMDC15
XM		N70200010

VCF6		R
CSB		S
E70100004		L
VSC6		F*



Hydraulic scheme

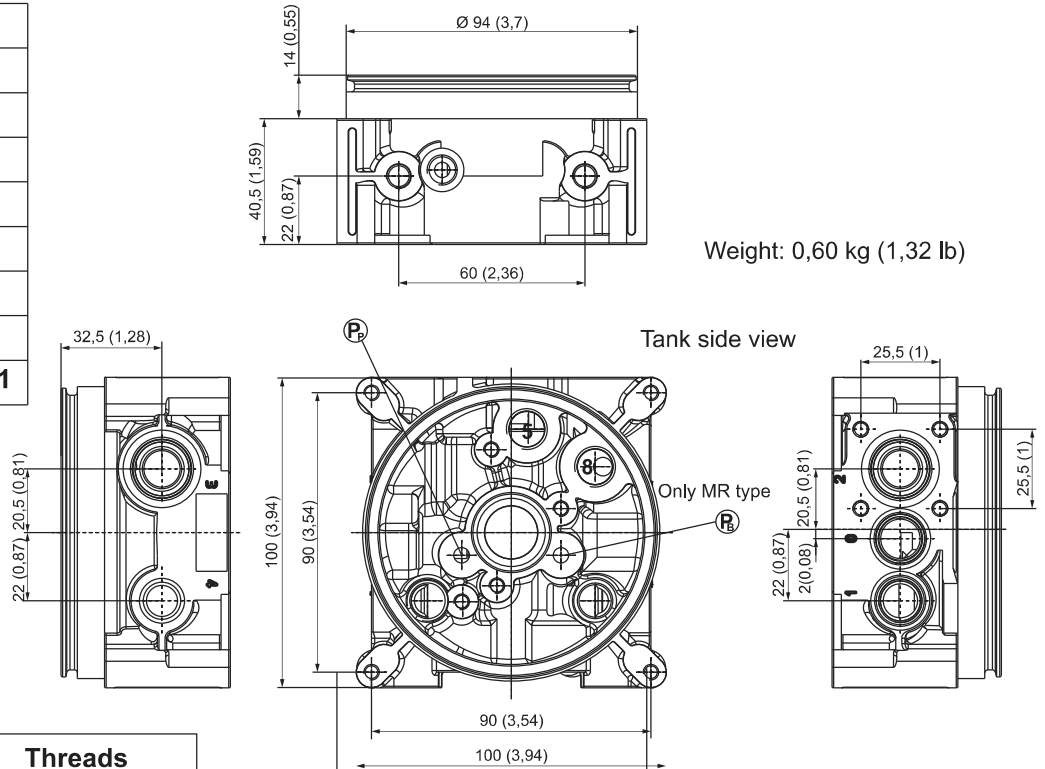


MICRO CENTRAL MANIFOLD OVERALL DIMENSIONS

Type	Spare part code
MB	E60102031
MR	E60102032
MRD	E60102032-S01
M4	E60102033
MBUS	E60102031US
MRUS	E60102032US
M4US	E60102033US
MRDUS	E60102032US-S01

Notes:

- codes ending with US are intended for the American market and machined with 9/16-18 UNF (SAE06) exit ports.
- all dimensions in mm and (inches)



Weight: 0,60 kg (1,32 lb)

Cavity	Threads
1, 4 (MR type)	M14x1 (relief valve)
0	5/8-18 UNF
2, 3	3/4-16 UNF (SAE 08) 5/8-18 UNF (MR type)
P-T, A-B, T1 (threaded on request only)	1/4 BSP 9/16-18 UNF (US type)
5, 8	1/4 BSP
External manifold attachment	2 M8 tie-rods
Tank attachment	4 bolts M5x10
Integral AC motor attachment	4 bolts M6x20
DC motor attachment	2 bolts M6x14 or M6 tie-rods
Pump attachment	2 bolts M5x** (see pump length on the relevant tables)
Foot mounting support attachment	2 bolts M8x16 5/16-24UNF (US type)
PMC hand pump / CM lever valve cap attachments	4 bolts M5x45

