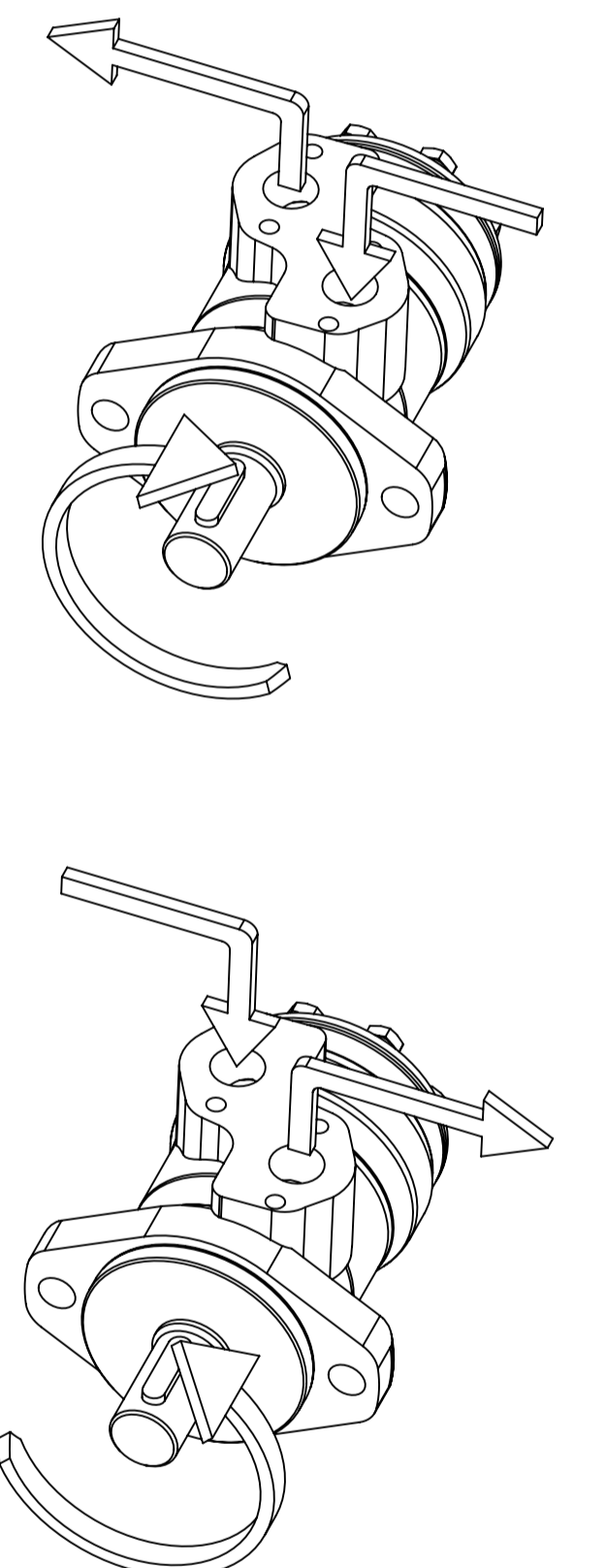
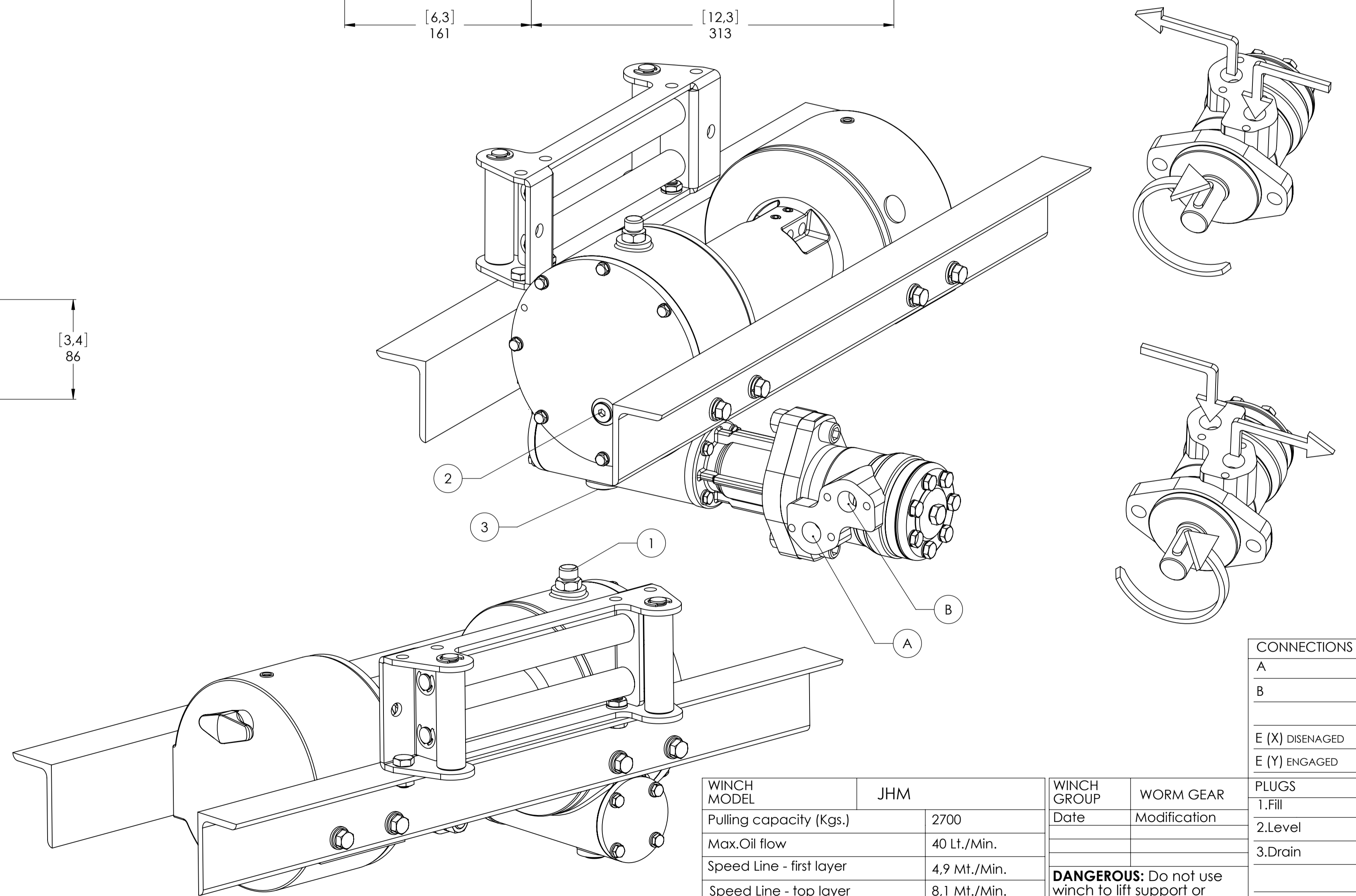
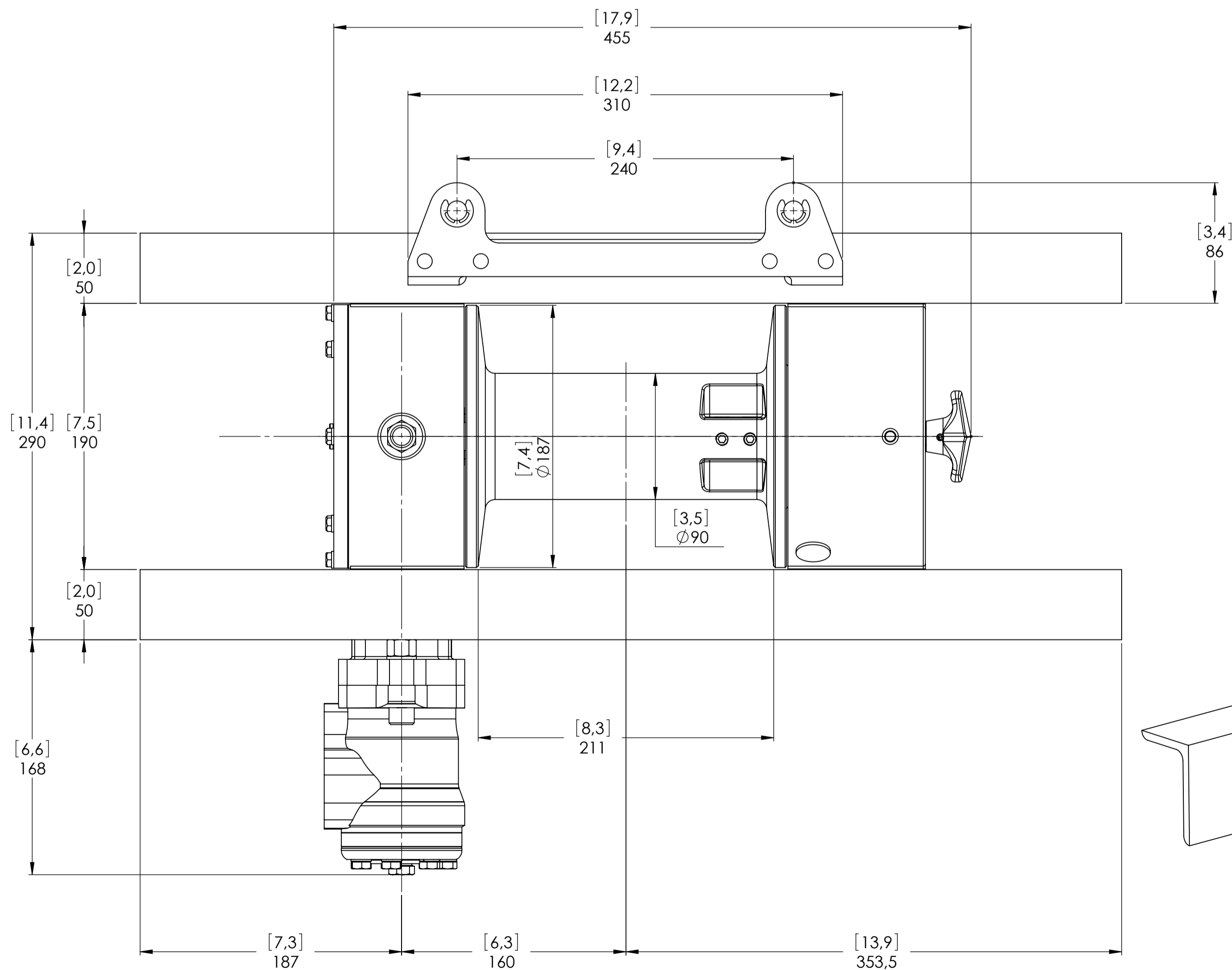
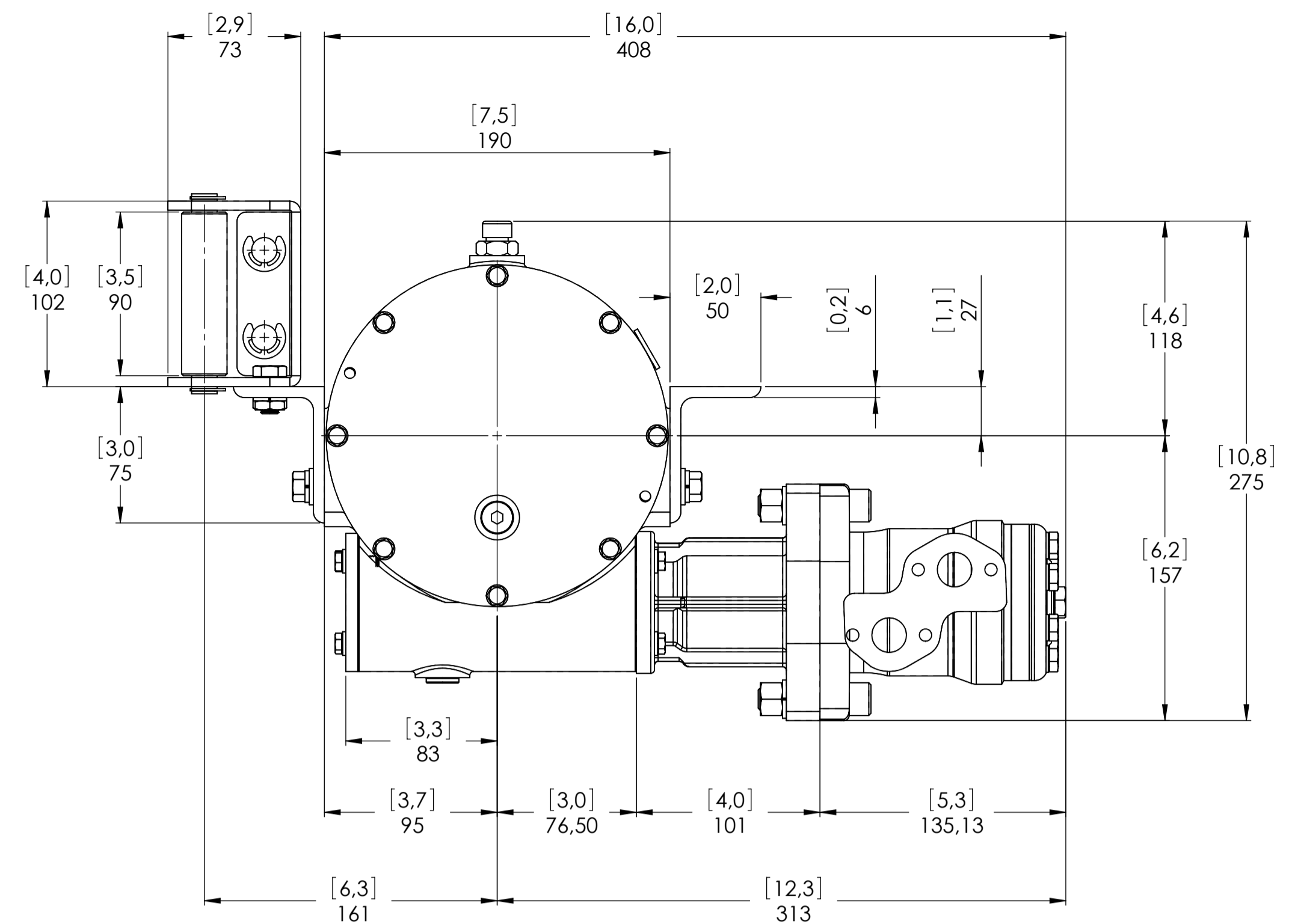
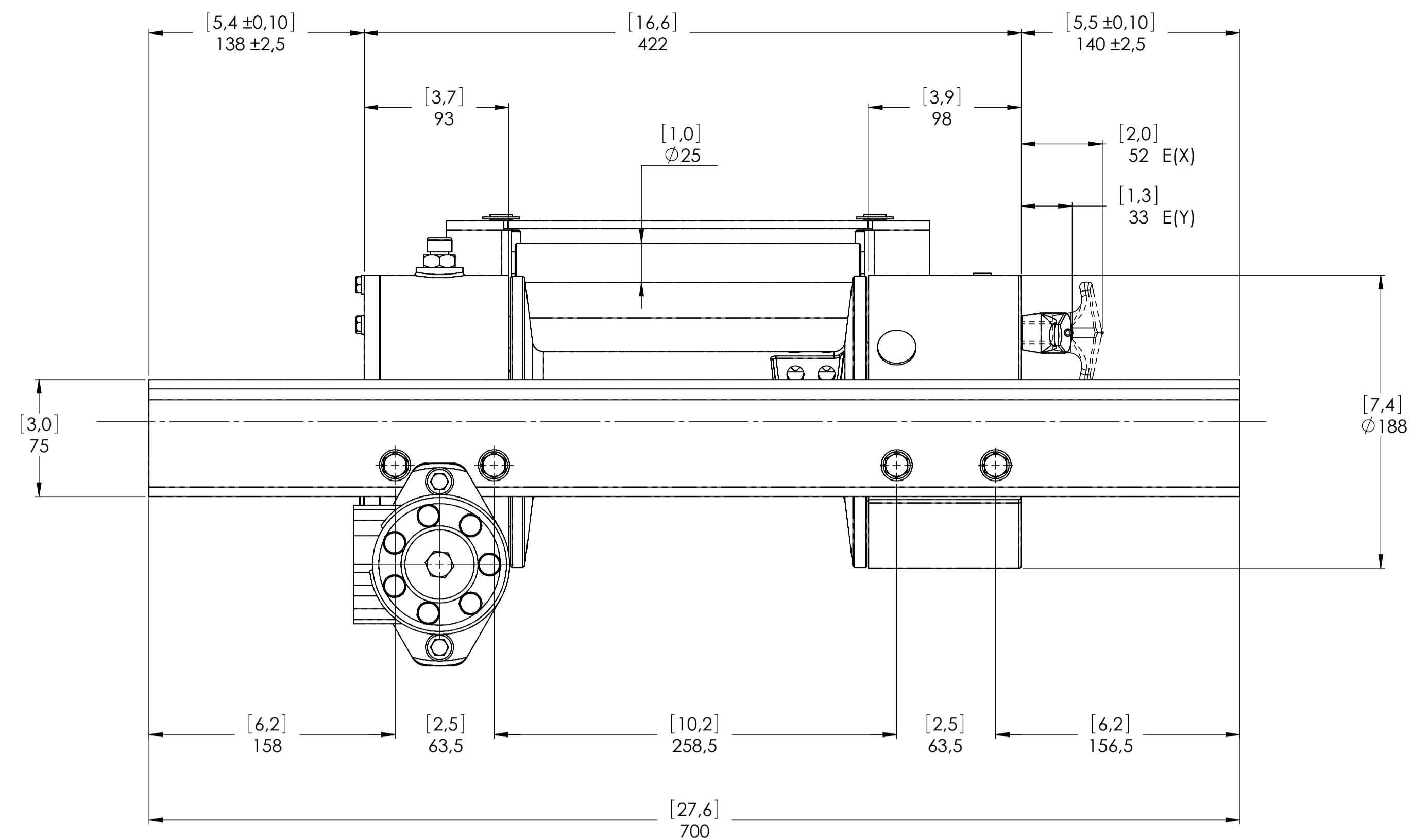
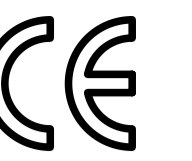


Machinery Directive 2006/42/CE  
EN 14492-1

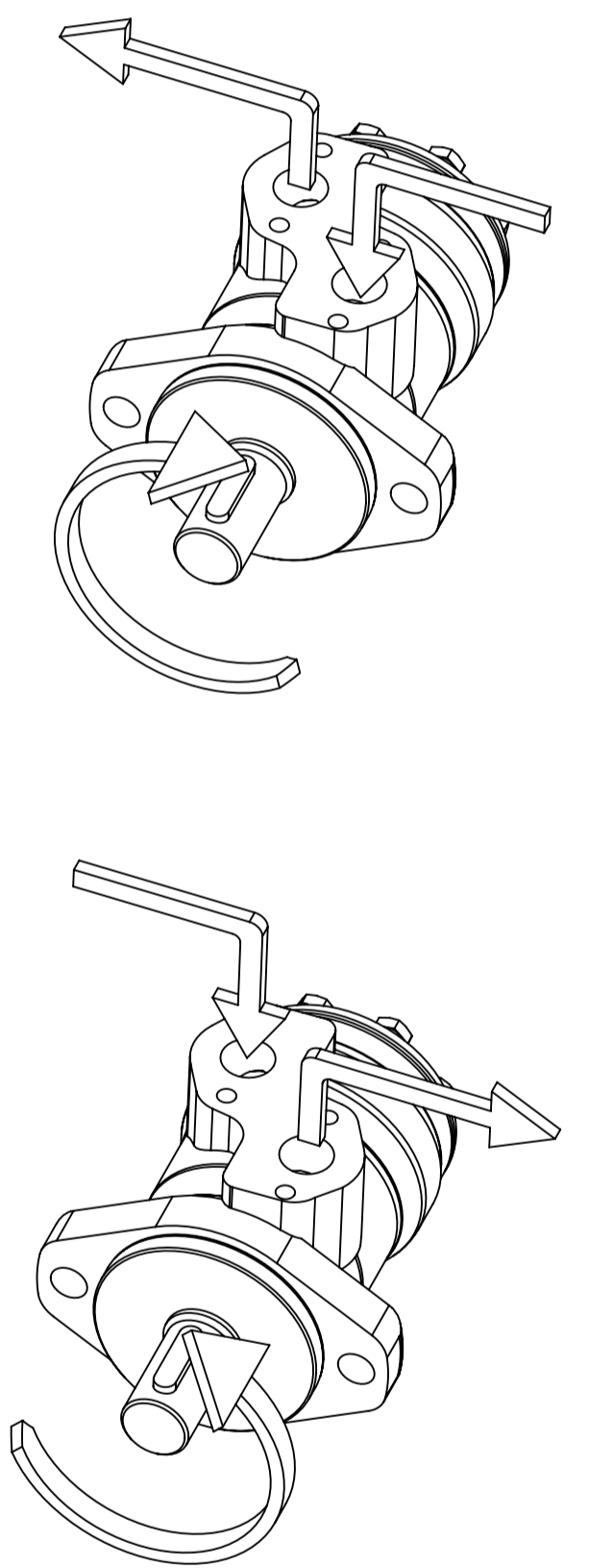
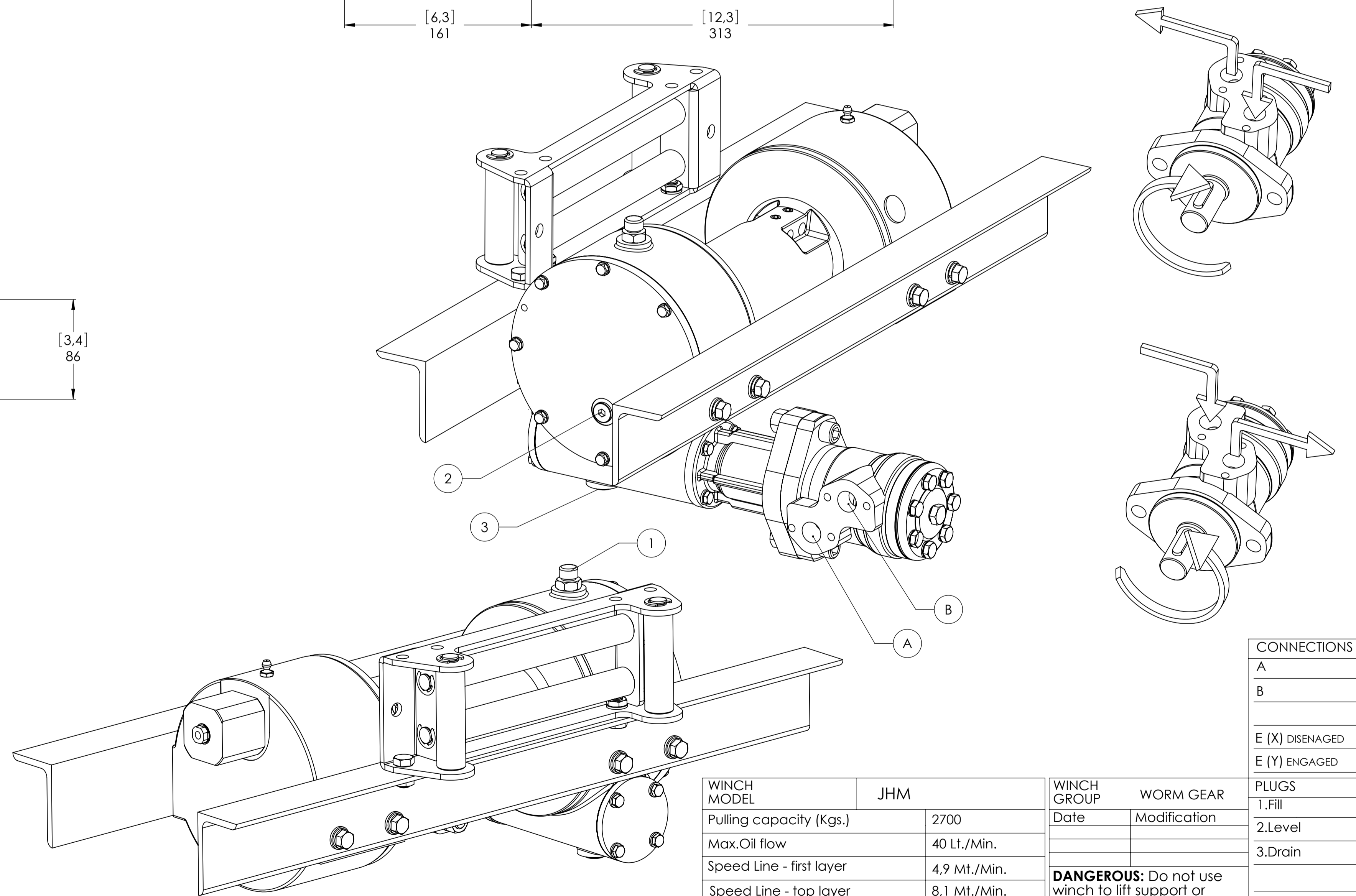
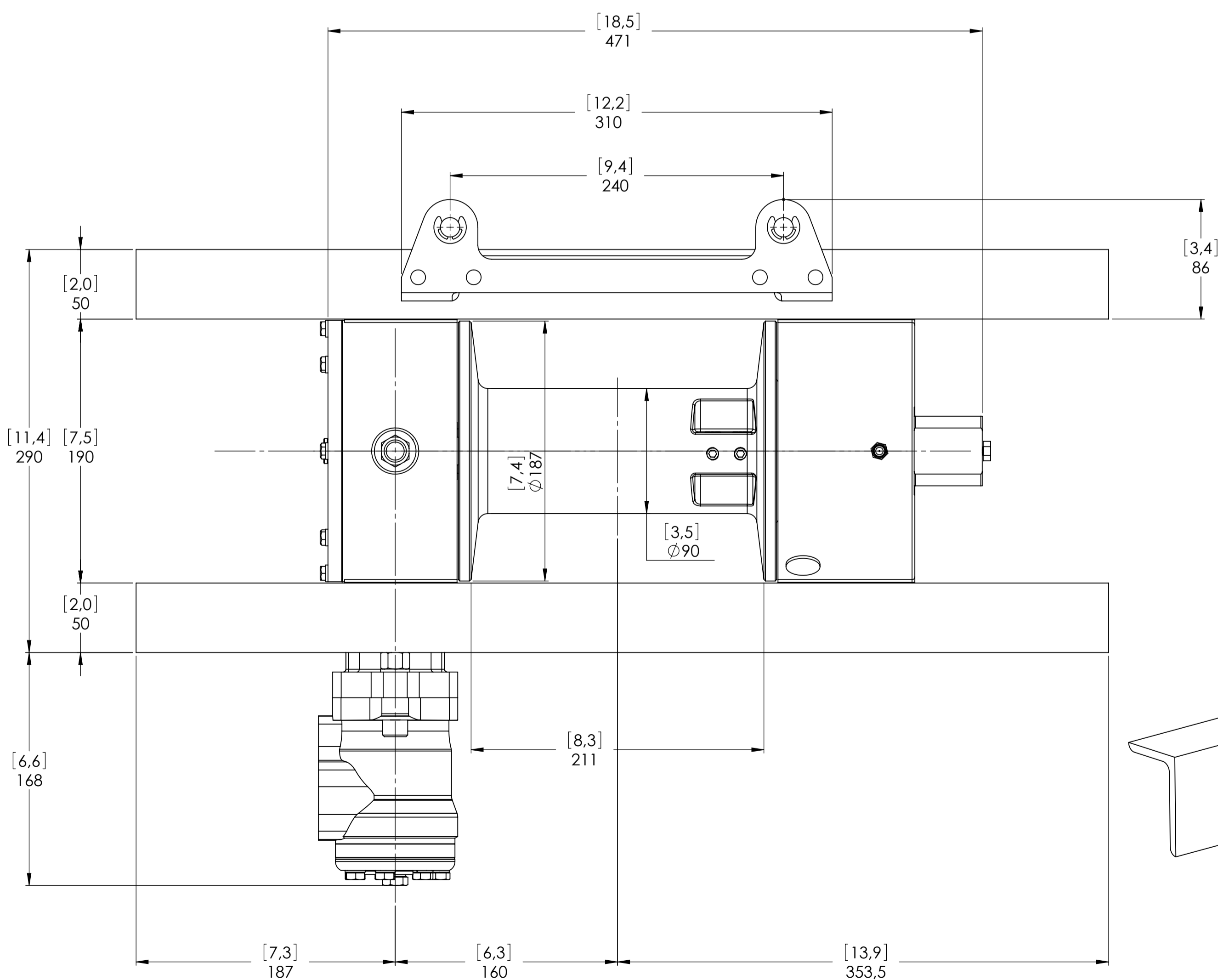
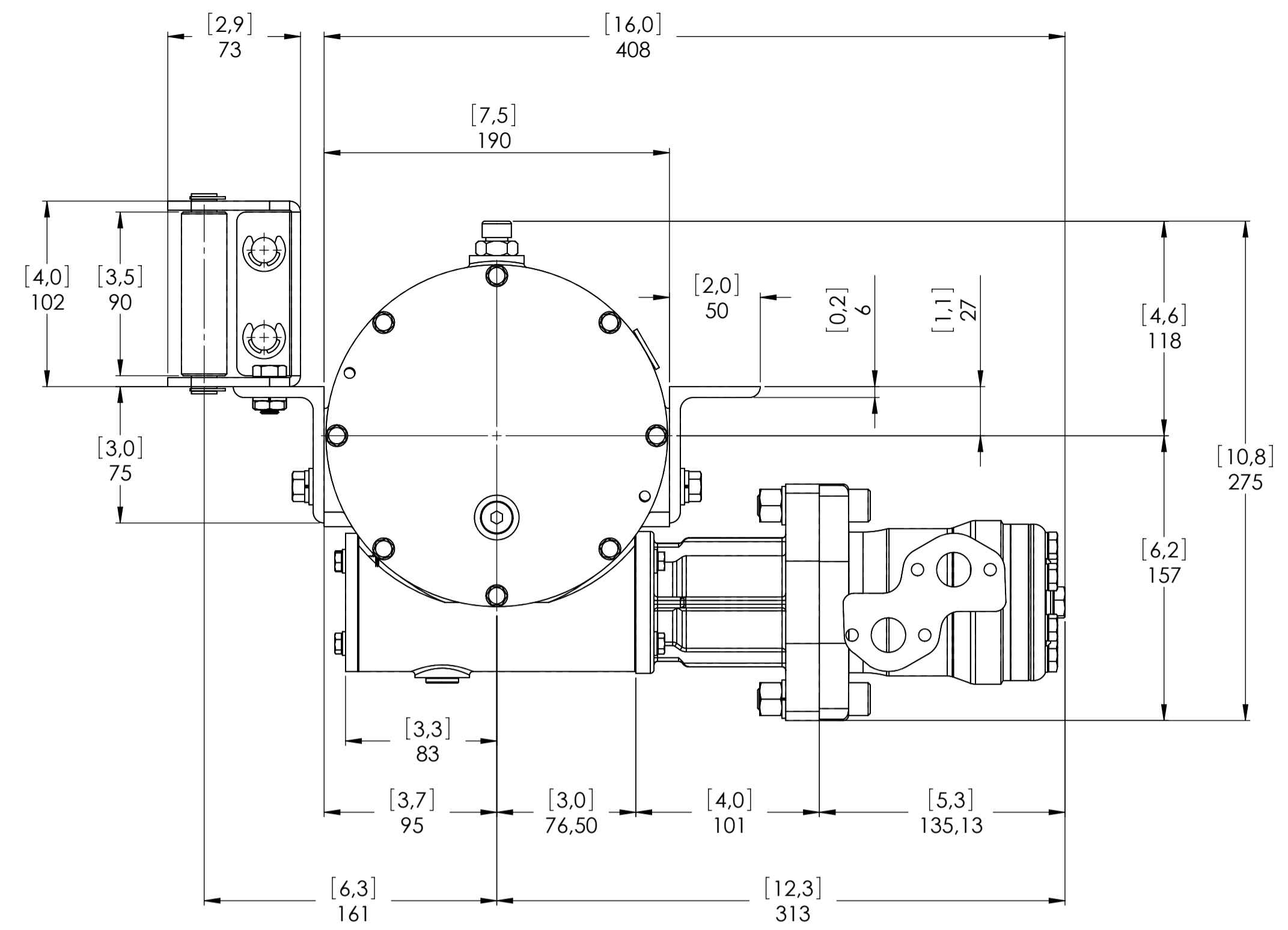
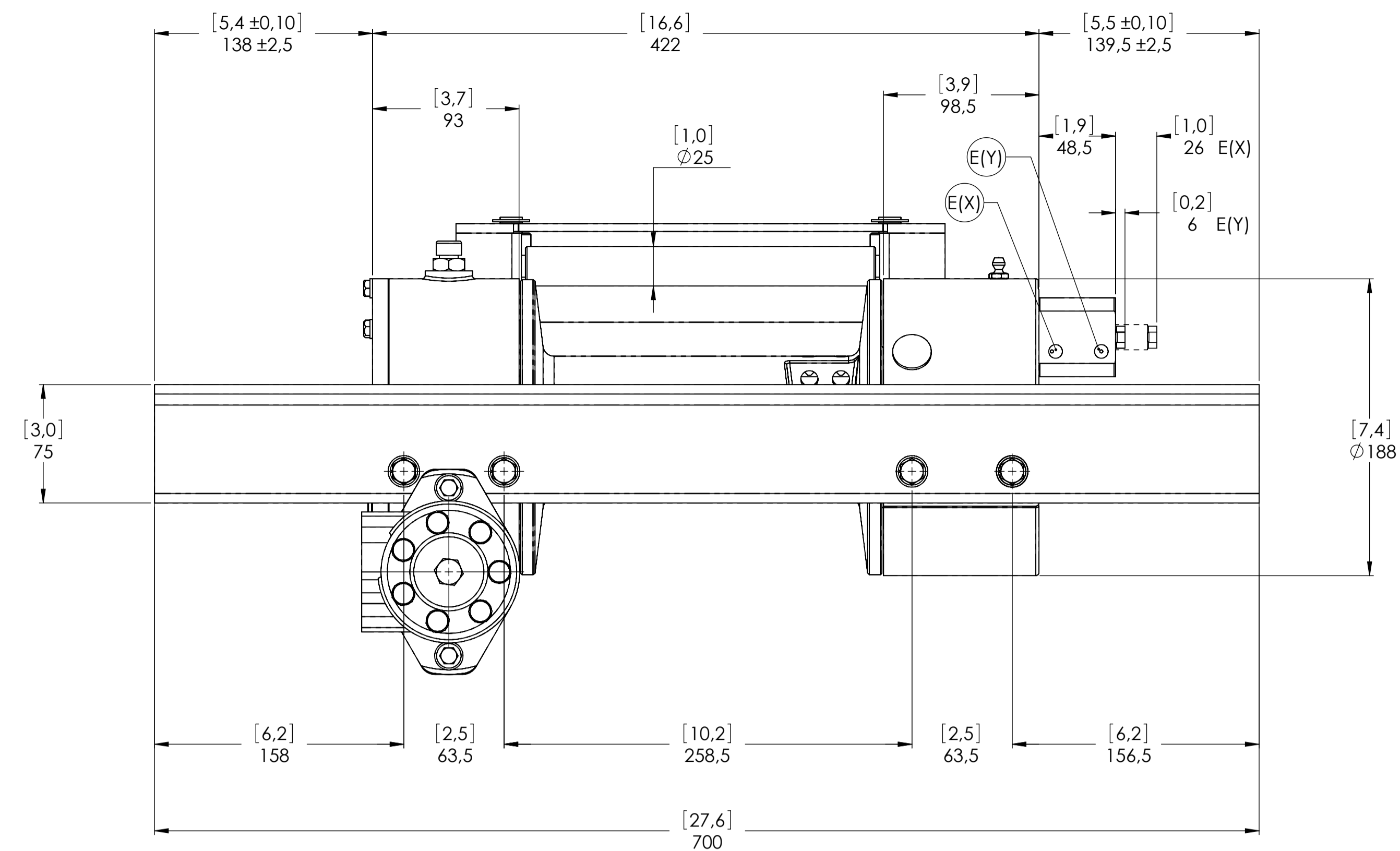


WINCH MODEL		JHM	WINCH GROUP	WORM GEAR	PLUGS	
Pulling capacity (Kgs.)	2700	Date	Modification	1.Fill	3/8"G	
Max.Oil flow	40 Lt./Min.			2.Level	3/8"G	
Speed Line - first layer	4,9 Mt./Min.			3.Drain	3/8"G	
Speed Line - top layer	8,1 Mt./Min.					
<b>DANGEROUS:</b> Do not use winch to lift support or transport personnel.					SCALE	1:2,5
					<b>WEIGHTS</b> Winch (without oil) 35 Kgs. Roller fairlead 3,5 Kgs. Heavy-duty roller fairlead ----- Rope tensioner -----	
 Funo - Bologna (Italy) www.vimeindustrial.com		Gear ratio	46:1	<b>WEIGHTS</b> Winch (without oil) 35 Kgs. Roller fairlead 3,5 Kgs. Heavy-duty roller fairlead ----- Rope tensioner -----		
The Quality is Transparent		Orbital hydr. motor	50 cc	<b>WEIGHTS</b> Winch (without oil) 35 Kgs. Roller fairlead 3,5 Kgs. Heavy-duty roller fairlead ----- Rope tensioner -----		
		Working pressure	130 Bar	<b>WEIGHTS</b> Winch (without oil) 35 Kgs. Roller fairlead 3,5 Kgs. Heavy-duty roller fairlead ----- Rope tensioner -----		
		Drum size	211 mm	<b>WEIGHTS</b> Winch (without oil) 35 Kgs. Roller fairlead 3,5 Kgs. Heavy-duty roller fairlead ----- Rope tensioner -----		
		Drum clutch	Manual	<b>WEIGHTS</b> Winch (without oil) 35 Kgs. Roller fairlead 3,5 Kgs. Heavy-duty roller fairlead ----- Rope tensioner -----		
		<b>VIME Industrial</b> reserves the right to improve its products through changes in designed or materials as it may seem desirable without notice.		<b>DATA</b> 09/11/2010		
				<b>CODE</b> JHM27D50G		

CONNECTIONS	
A	1/2"G
B	1/2"G
E (X) DISENAGED	-----
E (Y) ENGAGED	-----



Machinery Directive 2006/42/CE  
EN 14492-1



WINCH MODEL		JHM	WINCH GROUP		WORM GEAR	PLUGS		
Pulling capacity (Kgs.)		2700	Date		Modification	1.Fill	3/8"G	
Max.Oil flow		40 Lt./Min.				2.Level	3/8"G	
Speed Line - first layer		4,9 Mt./Min.				3.Drain	3/8"G	
Speed Line - top layer		8,1 Mt./Min.						
			<b>DANGEROUS:</b> Do not use winch to lift support or transport personnel.				SCALE	1:2,5
			Gear ratio				WEIGHTS	
			Orbital hydr. motor				Winch (without oil)	
			Working pressure				Roller fairlead	
			Drum size				Heavy-duty roller fairlead	
			Drum clutch				Rope tensioner	
			Air-operated					
The Quality is Transparent			VIME Industrial reserves the right to improve its products through changes in designed or materials as it may seem desirable without notice				CODE JHM27D50AG	
			DATA 9/11/2010					

CONNECTIONS	
A	1/2"G
B	1/2"G
E (X) DISENAGED	1/8"G
E (Y) ENGAGED	1/8"G

## 1.4.7 JHM 2700 WINCH TECHNICAL DATA

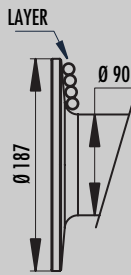
RATIO	WIRE ROPE SIZE [MM]	LAYER	LINE PULL [KGS]
46:1	8*	1	2.700
		2	2.320
		3	2.035
		4	1.815
		5	1.635
	10*	1	2.700
		2	2.250
		3	1.930
		4	1.690
		5	1.500

WIRE ROPE SIZE 8 MM	OIL SUPPLY	DRUM REVOLUTION [RPM]	LINE SPEED [MT/MIN]				
	[LT/MIN]		1	2	3	4	5
	20	6,6	2,0	2,4	2,7	3	3,4
	30	11,9	3,7	4,3	4,9	5,5	6,1
	40	15,9	4,9	5,7	6,5	7,3	8,1

WIRE ROPE SIZE 10 MM	OIL SUPPLY	DRUM REVOLUTION [RPM]	LINE SPEED [MT/MIN]				
	[LT/MIN]		1	2	3	4	5
	20	6,6	2,1	2,5	2,9	3,3	3,7
	30	11,9	3,8	4,5	5,3	6,0	6,8
	40	15,9	5,0	6,0	7,0	8,0	9,0

WIRE ROPE MIN. BREAKING LOAD EN 14492-1 [KGS]	5.400
---	-------

DRUM SIZE JHM = 211 MM	LAYER	DRUM DIAMETER [MM]		WIRE ROPE ON LAYER [MT]		WIRE ROPE QUANTITY [MT]	
		8 MM	10 MM	8 MM	10 MM	8 MM	10 MM
		5	162	180	12,9	11,4	51,8
4	146	160	11,6	10,1	38,9	32,8	
3	130	140	10,4	8,8	27,3	22,7	
2	114	120	9,1	7,6	16,9	13,9	
1	98	100	7,8	6,3	7,8	6,3	
0	90	90	-	-	-	-	



WIRE ROPE CAPACITY [MT]		MAX. WIRE ROPE CAPACITY EN 14492-1 [MT]		MAX. WIRE ROPE CAPACITY [MT]	
8 MM	10 MM	8 MM	10 MM	8 MM	10 MM
40	30	51**	32**	64	44

DESCRIPTION	WEIGHT
	[KGS]
WINCH (WITHOUT CABLE)	35
ACCESSORY : ROLLERFAIRREAD	3,5
ACCESSORY : CABLE TENSIONER	-----

### NOTES

Specifications are subject to change without notification and without incurring obligation. Specifications in this publication are theoretical and may vary depending on hydraulic system, environment, etc.

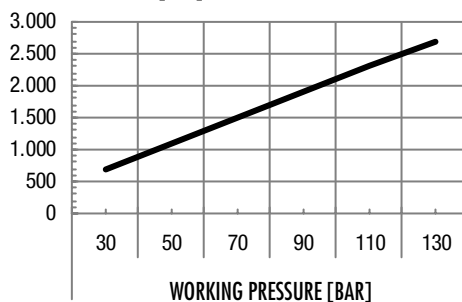
### NOTES

\*Wire rope size must be respected. Recommended wire rope min. tensile strength 2160 N/mm<sup>2</sup>.  
Wire rope minimum breaking load must be at least double of winch max. pulling capacity.

\*\* Max. wire rope capacity according with EN 14492-1.

## 1.4.8 JHM 2700 WINCH PERFORMANCE CHARTS AT THE 1<sup>ST</sup> LAYER

LINE PULL-FIRST LAYER [KGS]



LINE SPEED [MT/MIN]

