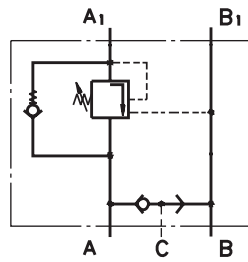
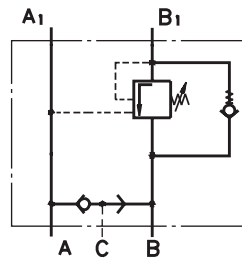


# VALVES FOR HYDRAULIC MOTORS

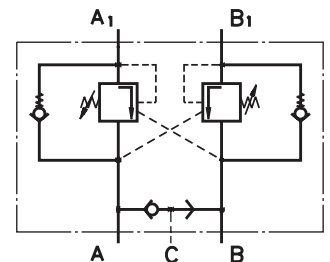
## OVERCENTER VALVES WITH BRAKE CONTROL



Single Overcenter Valves with Brake Control type KPBR ... AE



Single Overcenter Valves with Brake Control type KPBR ... BE



Dual Overcenter Valves with Brake Control type KPBR ... D

## CONTENTS

Valves for MP, MR and MH type KPBR ... 43  
 Valves for MS type KPBS ..... 44  
 Valves for RW and HW type KPBW ..... 45  
 Valves for MT type KPBT ..... 46  
 Valves for MV type KPBV ..... 47  
 Switch valves type KPWR and KPWS .... 48  
 Switch valves type KPWT and KPWW ..... 49

Crossover Relief Valves ..... 50  
 Valves for MP, MR and MH type KP...R ... 50  
 Valves for MS type KP...S ..... 51  
 Valves for RW and HW type KP...W ..... 52  
 Valves for MT type KP...T ..... 54  
 Valves for MV type KP...V ..... 56  
 Order Code ..... 58

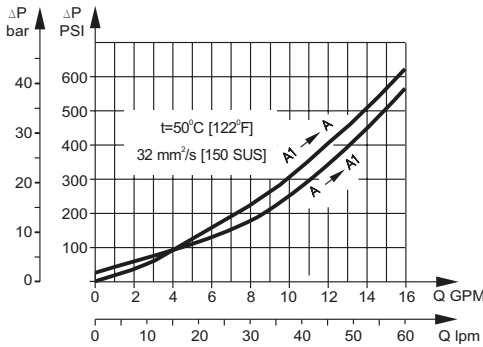
## SPECIFICATION DATA

Parameters	Type										
	KPBR...E	KPBS...E	KPBW...E	KPBR...D	KPBS...D	KPBW...D	KPBT...E	KPBT...D	KPBV...E	KPBV...D	
Flow Rate , l/min [GPM]	60 [15.85]					100 [26.4]		200 [52.8]			
Rated Pressure*, bar [PSI]	60±280 [870±4060]					70±250 [1015±3625]					
Pilot Ratio	4,25:1										
Weight ,	kg	3,020	2,900	3,350	3,060	2,920	3,400	5,400	5,800	9,200	9,750
	[lb]	[6.658]	[6.393]	[7.385]	[6.746]	[6.437]	[7.496]	[11.905]	[12.787]	[20.283]	[21.495]

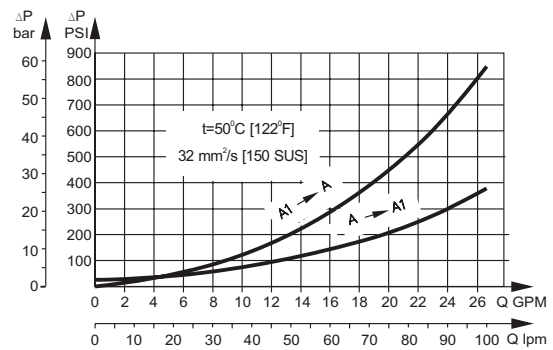
\*Pressure Settings are at flow rate of 5 lpm [1.3 GPM] and viscosity 32 mm<sup>2</sup>/s [150 SUS] at 50 °C [122° F].

## PRESSURE LOSSES

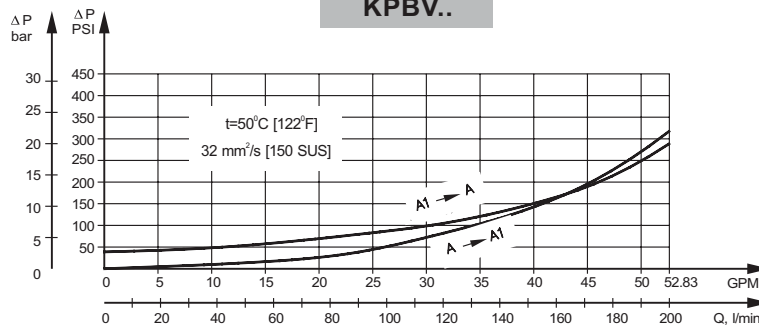
KPBR..., KPBS... and KPBW...



KPBT..

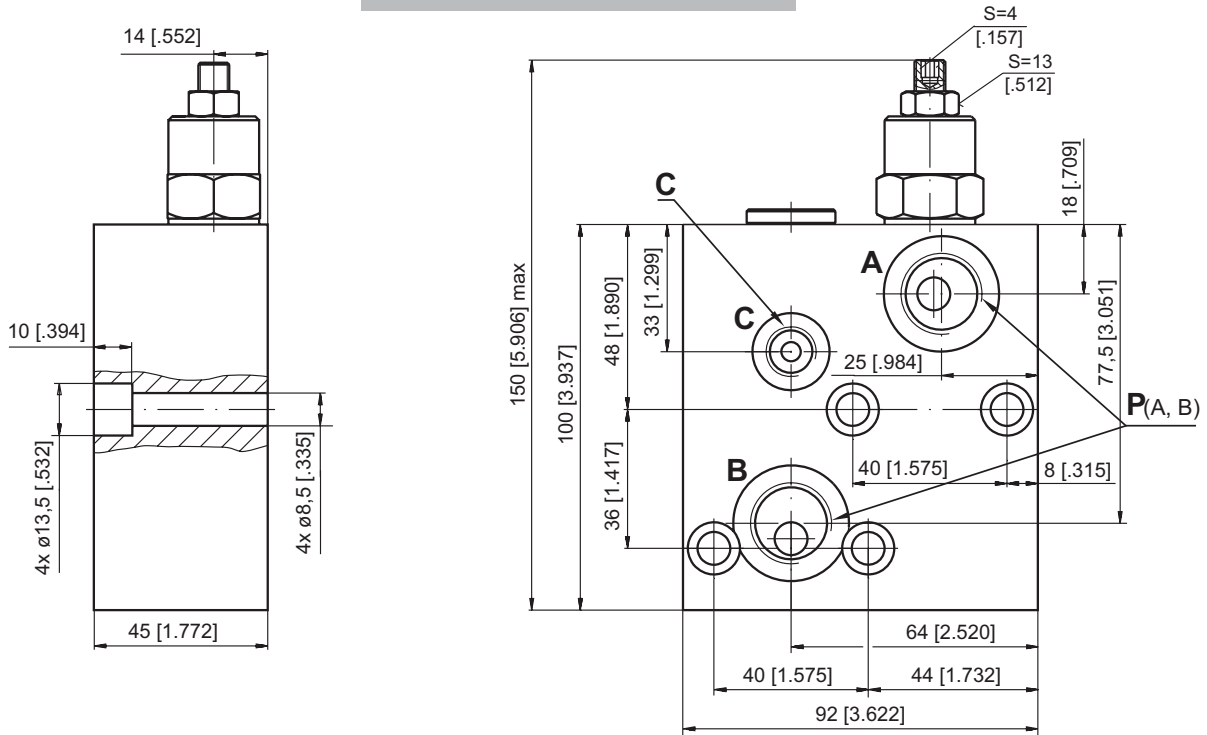


KPBV..

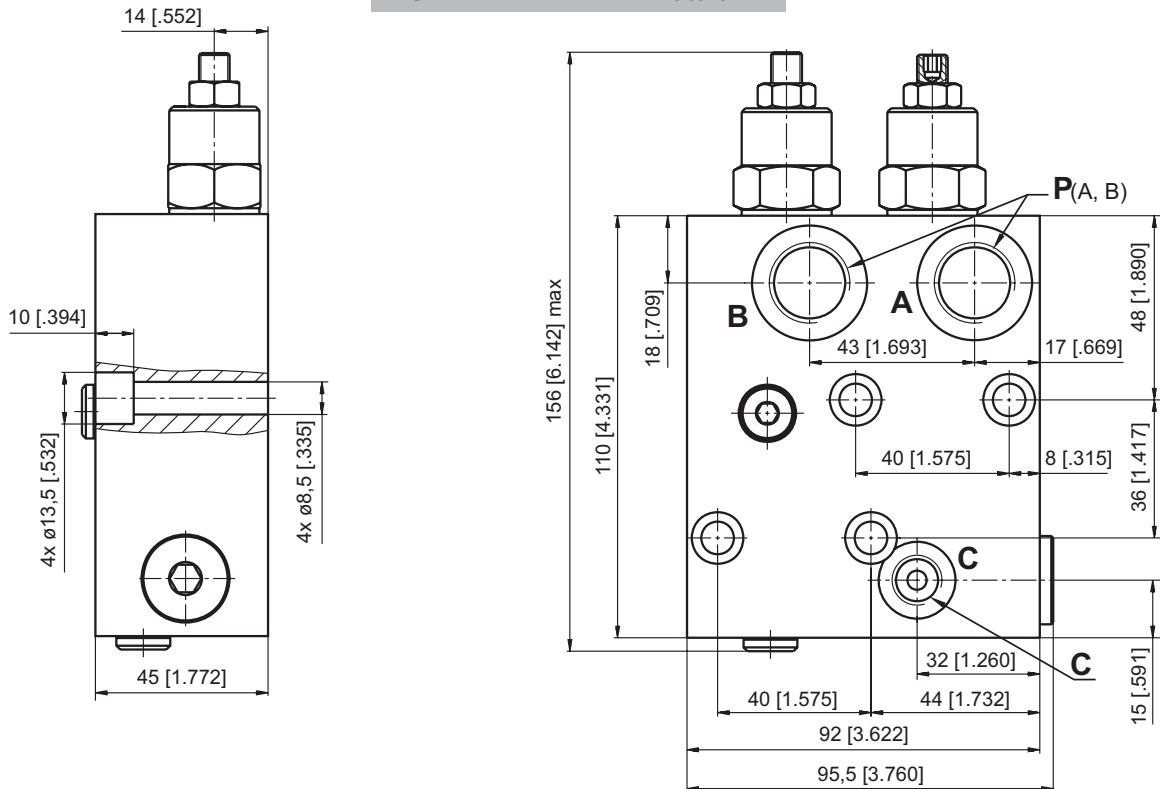


**VALVES FOR MP, MR, MH HYDRAULIC MOTORS**

**SINGLE VALVE KPBR-250/1/E...**



**DUAL VALVE KPBR-250/1/D...**



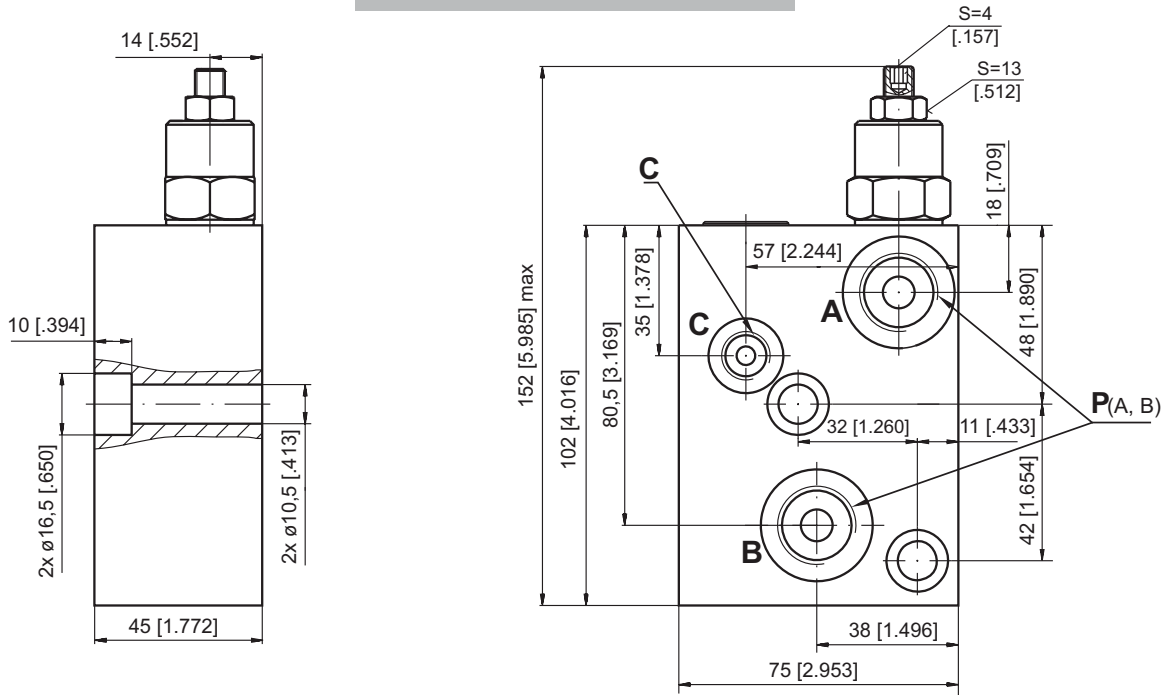
	Thread Ports - P <sub>(A,B)</sub>	Thread Port - C
-	G1/2 16 [.63] depth	G1/4 12 [.47] depth
M	M22x1,5 16 [.63] depth	M14x1,5 12 [.47] depth
A	7/8 - 14 UNF O-ring 16 [.63] depth	7/16 - 20 UNF O-ring 12,7 [.50] depth



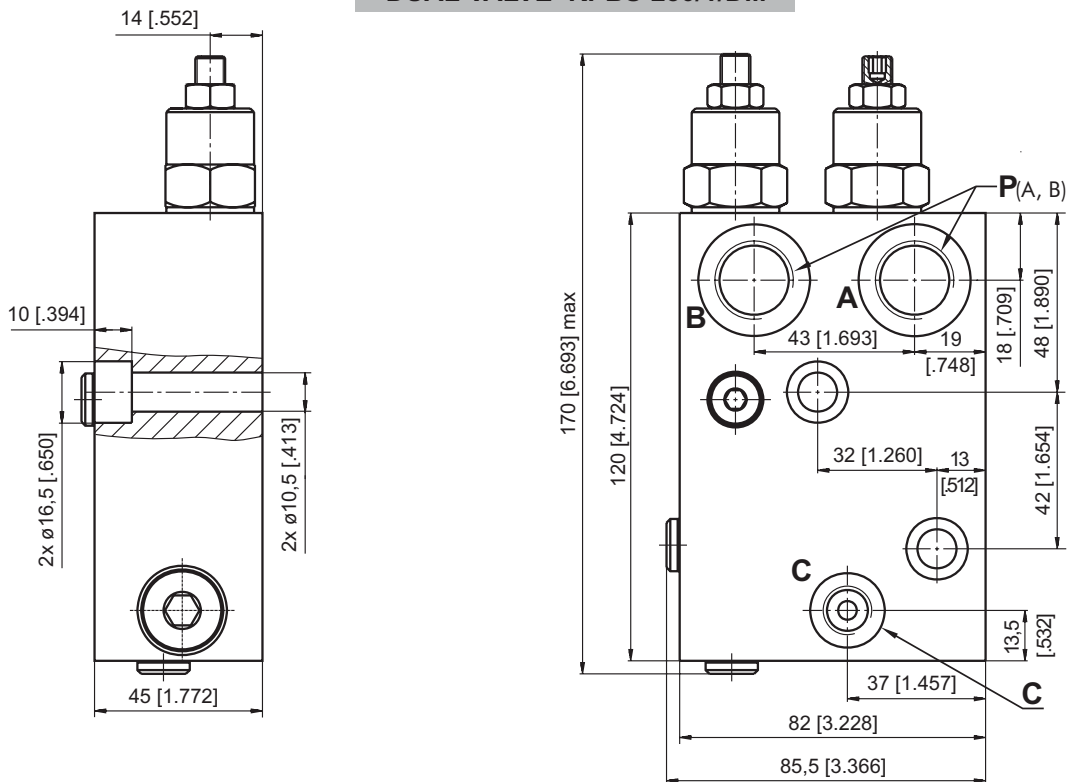
**Note :** KPBR Blocks are installed directly on MP, MR and MH Motors with four screws M8x45 - 8.8 DIN 912 or 5/16-18 UNC, 1.75 long ANSI B 18.3 . Tightening torque 1,8 daNm [160 lb-in].

**VALVES FOR MS HYDRAULIC MOTORS**

**SINGLE VALVE KPBS-250/1/E...**



**DUAL VALVE KPBS-250/1/D...**



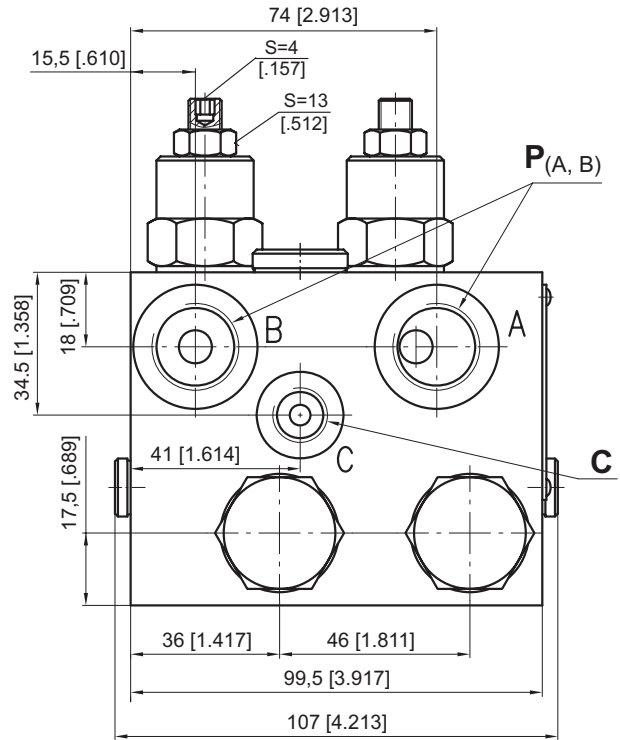
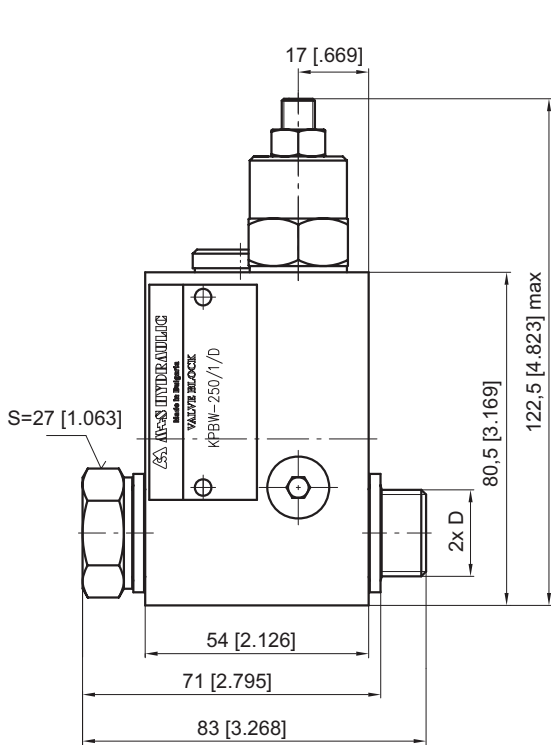
	Thread Ports - P <sub>(A,B)</sub>	Thread Port - C
-	G1/2 16 [.63] depth	G1/4 12 [.47] depth
M	M22x1,5 16 [.63] depth	M14x1,5 12 [.47] depth
A	7/8 - 14 UNF O-ring 16 [.63] depth	7/16 - 20 UNF O-ring 12,7 [.50] depth



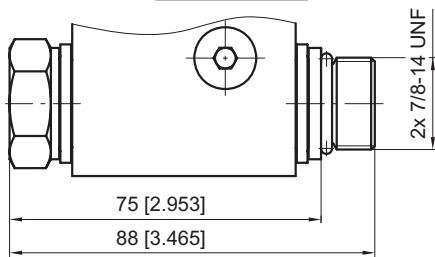
**Note :** KPBS Blocks are installed directly on MS Motors with two screws M10x45 - 8.8 DIN 912 or 3/8-16UNC, 1.75 long ANSI B 18.3 . Tightening torque 3,5 daNm [310 lb-in].

**VALVES FOR RW and HW HYDRAULIC MOTORS**

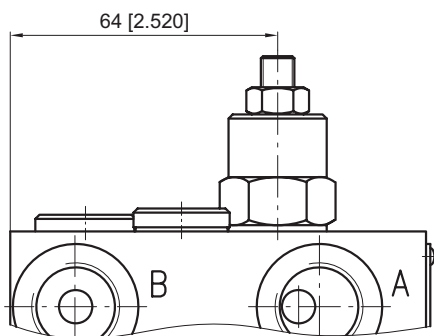
**DUAL VALVE KPBW-250/1/D...**



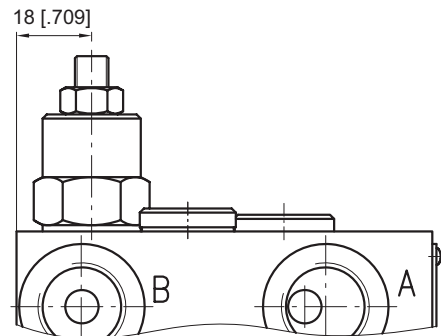
**KPBW-...A**



**SINGLE VALVE KPBW-250/1/AE...**



**SINGLE VALVE KPBW-250/1/BE...**



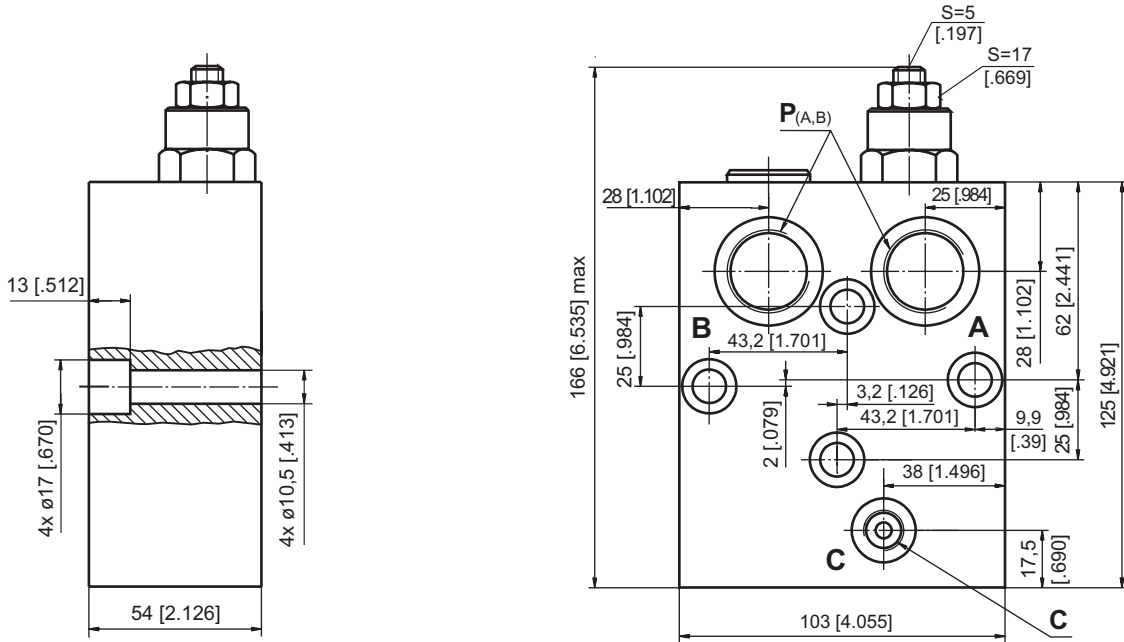
	Thread Ports - P <sub>(A,B)</sub>	Thread Port - C	Thread Ports - D
-	G1/2 16 [.63] depth	G1/4 12 [.47] depth	G1/2 12 [.47] length
M	M22x1,5 16 [.63] depth	M14x1,5 12 [.47] depth	M22x1,5 12 [.47] length
A	7/8 - 14 UNF O-ring 16 [.63] depth	7/16 - 20 UNF O-ring 12,7 [.50] depth	7/8 - 14 UNF O-ring 13 [.51] length



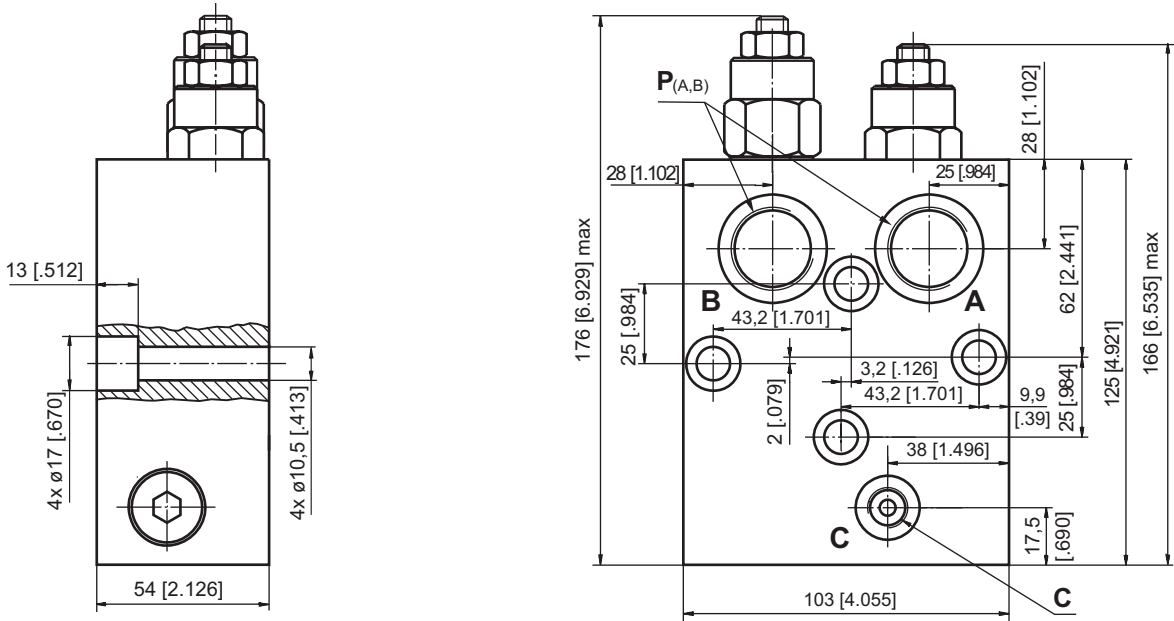
**Note :** KPBW Blocks assembly to RW or HW motors is done with two screws (thread D) included in the valve set. Tightening torque 8 daNm [710 lb-in].

**VALVES FOR MT HYDRAULIC MOTORS**

**SINGLE VALVE KPBT-250/1/E...**



**DUAL VALVE KPBT-250/1/D...**



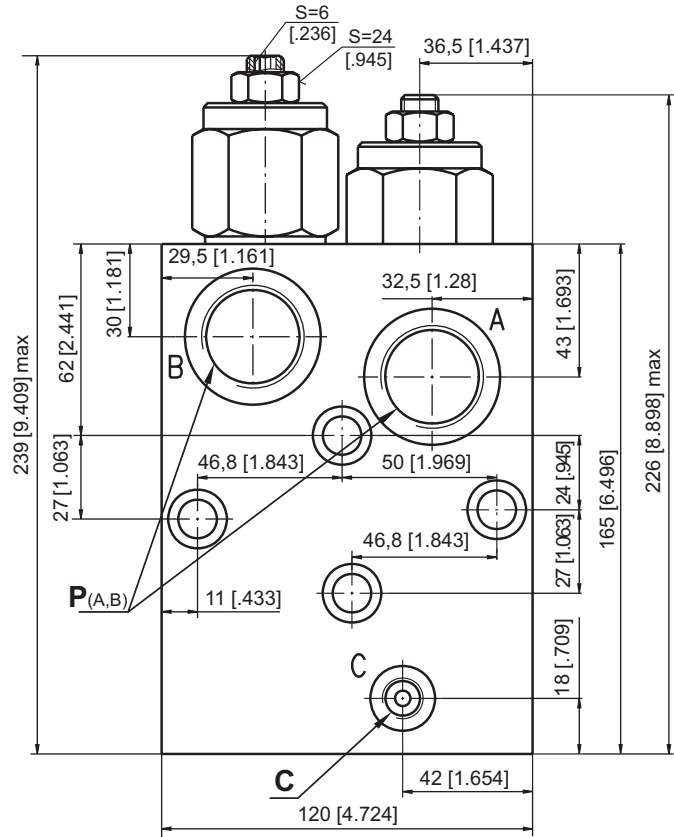
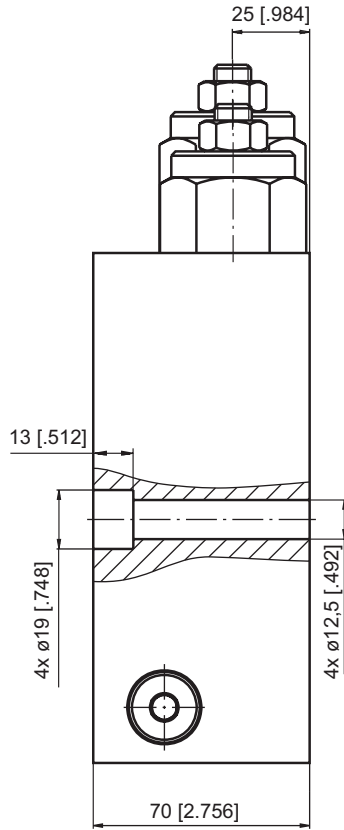
	Thread Ports - P <sub>(A,B)</sub>	Thread Port - C
-	G3/4 17 [.67] depth	G1/4 14 [.55] depth
M	M27x2 17 [.67] depth	M14x1,5 14 [.55] depth
A	1 1/16-12 UN O-ring 17 [.67] depth	7/16 - 20 UNF O-ring 12,7 [.50] depth



**Note :** KPBT Blocks are installed directly on MT Motors with four screws M10x50 - 8.8 DIN 912. Tightening torque 3,5 daNm [310 lb-in].

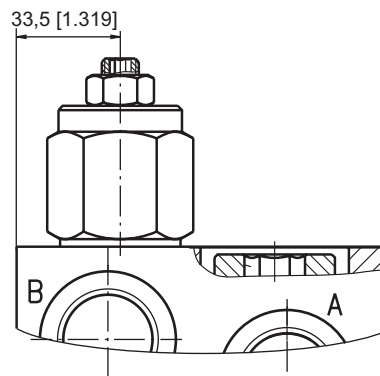
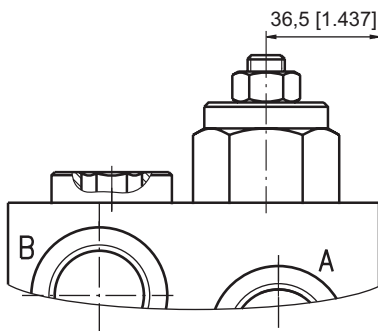
**VALVES FOR MV HYDRAULIC MOTORS**

**DUAL VALVE KPBV-250/1/D...**



**SINGLE VALVE KPBV-250/1/AE...**

**SINGLE VALVE KPBV-250/1/BE...**



	Thread Ports - P <sub>(A,B)</sub>	Thread Port - C
-	G 1 20 [.79] depth	G1/4 14 [.55] depth
M	M33x2 20 [.79] depth	M14x1,5 14 [.55] depth
A	1 5/16 - 12 UN O-ring 20 [.79] depth	7/16 - 20 UNF O-ring 12,7 [.50] depth



**Note :** KPBV Blocks are installed directly on MV Motors with four screws M12x70 - 8.8 DIN 912. Tightening torque 6,5 daNm [575 lb-in].