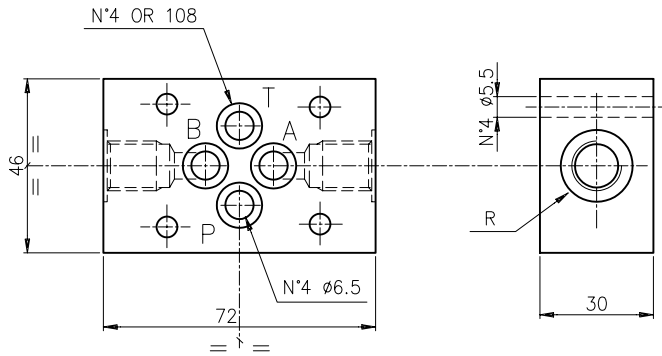


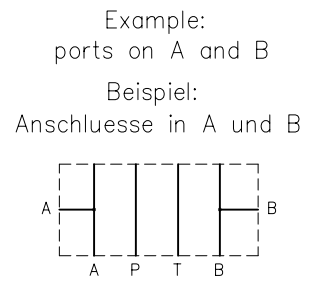
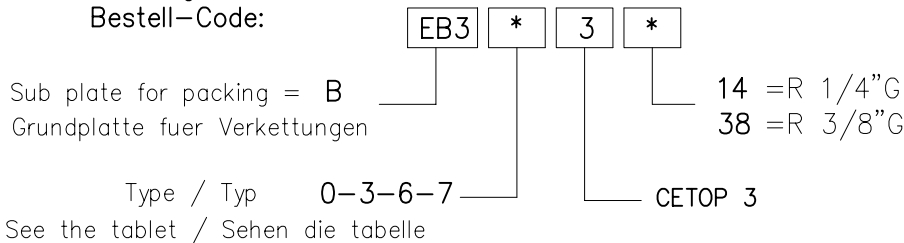
SUB PLATE FOR PACKING EB3..3.. AND TYPE EB503
GRUNDPLATTE FUER VERKETTUNGEN EB3..3.. UND TYP EB503

Sub plate for packing type EB3.... Weight = 0.6 Kg
 Grundplatte fuer Verkettungen typ EB3.... Gewicht = 0.6 Kg
 Set of 6 pcs. / Satz von 6 Stk.

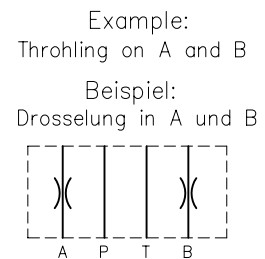
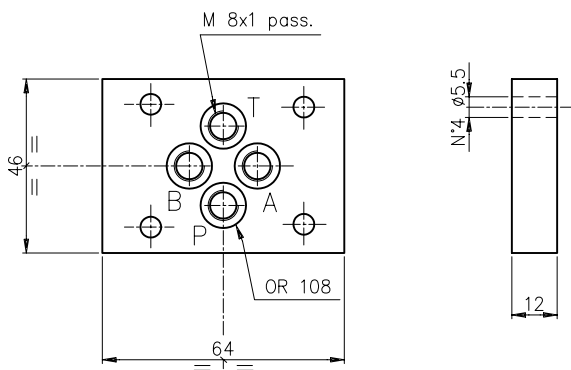


Tipo Type	Utilizzi Sorties
0	A e B
3	Side B P e T Side A
6	P e P
7	T e T

Ordering code
 Bestell-Code:



Sub plate for packing with A-B-P-T threaded M8x1. Weight = 0.3 Kg
 Grundplatte fuer Verkettungen mit A-B-P-T Gewindeanschlüssen M8x1.
 Gewicht = 0.3 Kg
 Set of 14 pcs. / Satz von 14 Stk.



Ordering code
 Bestell-Code

