

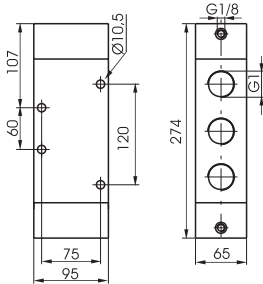
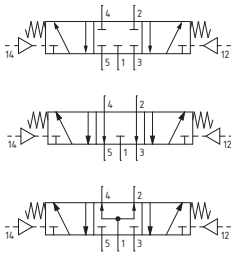


Pneumatic-Pneumatic 5/3

Coding: 211.53.Ⓢ.11.11

Operational characteristics	
Fluid	Filtered air. No lubrication needed, if applied it shall be continuous
Max. working pressure (bar)	10
Temperature °C	-5 ... +70
Flow rate at 6 bar with Δp=1 (l/min)	6500
Orifice size (mm)	20
Working ports size	G1"
Pilot ports size	G1/8"

Ⓢ	FUNCTION
	31 = Closed centres
	32 = Open centres
	33 = Pressured centres



Weight 4200 g
Minimum pilot pressure 3 bar

AIR DISTRIBUTION