

## Modular base (2 places)

Coding: 22E **C** **F** **V**

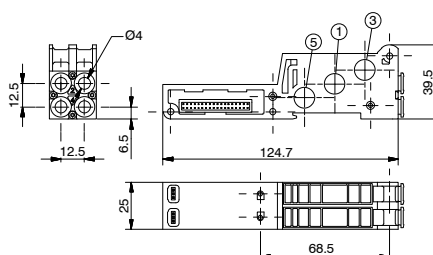
Technical characteristics	
Fluid	Filtered air. No lubrication needed, if applied it shall be continuous
Working pressure (bar)	From vacuum to 10
Temperature °C	-5 ... +50

<b>C</b>	TUBE DIAMETER
	4 = Ø4
	6 = Ø6
	8 = Ø8
<b>F</b>	FUNCTION
	01 = Opened ports
	03 = Ports 1-5 separated
	04 = Ports 1-3 separated
	05 = Port 5 separated
	06 = Separated ports
	07 = Port 1 separated
<b>V</b>	VERSION
	M = for monostable S.V.
	B = for bistable S.V.



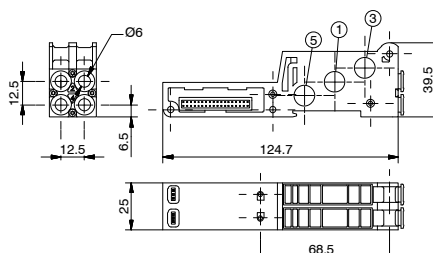
Weight 75 g

22E4 **C** **F** **V**



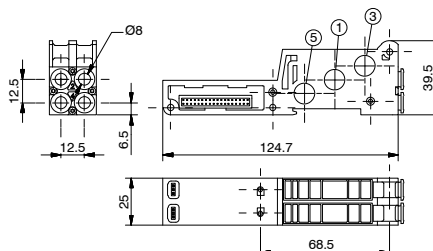
Weight 75 g

22E6 **C** **F** **V**



Weight 75 g

22E8 **C** **F** **V**



## High flow rate modular base (2 places)

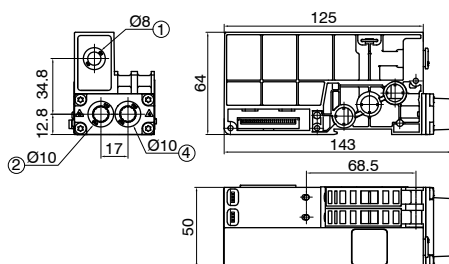
Coding: 22E1.01 **V**

Technical characteristics	
Fluid	Filtered air. No lubrication needed, if applied it shall be continuous
Working pressure (bar)	From vacuum to 10
Temperature °C	-5 ... +50

<b>V</b>	VERSION
	M = for monostable S.V.
	B = for bistable S.V.



Weight 200 g

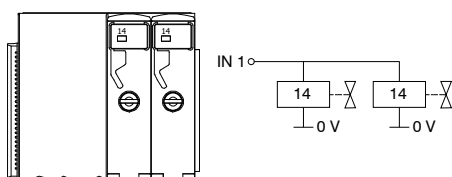


the two solenoid valves mounted on the high-flow base are pneumatically and electrically in parallel.

**Attention:** the mounted solenoid valves must always be two and of the same type.

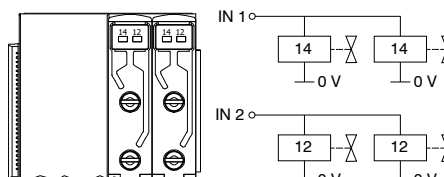
**Attention:** the additional supply is necessary to guarantee the declared flow values, the port (1), if not supplied, it must be plugged.

### Monostable configuration



the monostable base consumes only one electrical signal and can only mount monostable solenoid valves.

### Bistable configuration



the bistable base consumes two electrical signals and can mount both bistable and monostable solenoid valves; in the latter case one electrical signal will be lost.