



Spool type valves and solenoid valves Series T200 - Mechanical and manual command - G1/8"

Push button - Spring

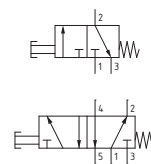
Coding: T228.1.6.22/C

Operational characteristics

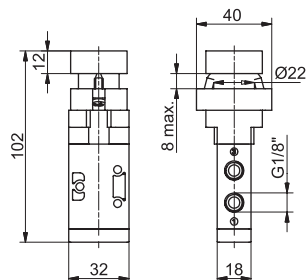
Fluid	Filtered air. No lubrication needed, if applied it shall be continuous
Max. working pressure (bar)	10
Temperature °C	-5 ... +50
Flow rate at 6 bar with $\Delta p=1$ (NI/min)	620
Orifice size (mm)	6
Working ports size	G1/8"

TYPE	
1 32 = 3 ways, 2 positions	
52 = 5 ways, 2 positions	
BUTTON COLOR	
1 = Red	
2 = Black	
3 = Green	
4 = Yellow	

Operating force 33 N



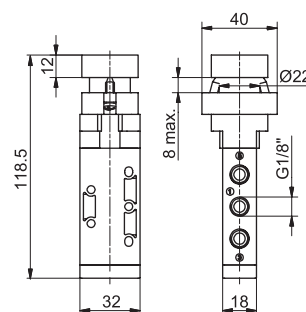
3/2 ways



Weight 200 g

T228.32.6.22/C

5/2 ways



Weight 212 g

T228.52.6.22/C

Raised push button Ø22 - Spring

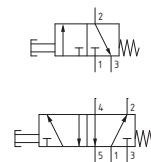
Coding: T228.1.6.23/C

Operational characteristics

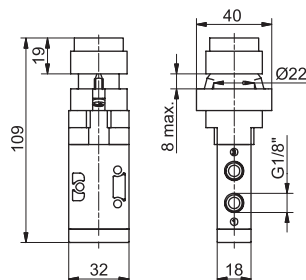
Fluid	Filtered air. No lubrication needed, if applied it shall be continuous
Max. working pressure (bar)	10
Temperature °C	-5 ... +50
Flow rate at 6 bar with $\Delta p=1$ (NI/min)	620
Orifice size (mm)	6
Working ports size	G1/8"

TYPE	
1 32 = 3 ways, 2 positions	
52 = 5 ways, 2 positions	
BUTTON COLOR	
1 = Red	
2 = Black	
3 = Green	
4 = Yellow	

Operating force 33 N



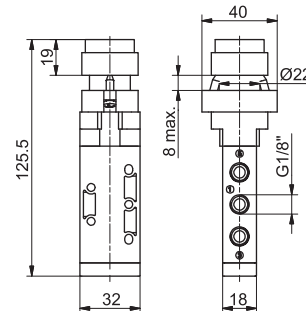
3/2 ways



Weight 205 g

T228.32.6.23/C

5/2 ways



Weight 217 g

T228.52.6.23/C

Push button Ø22 - 2 positions

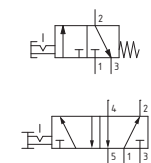
Coding: T228.1.6.25

Operational characteristics

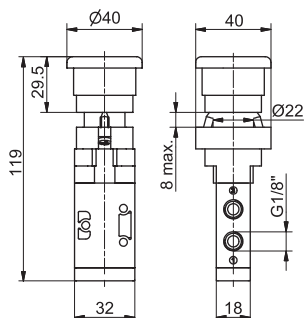
Fluid	Filtered air. No lubrication needed, if applied it shall be continuous
Max. working pressure (bar)	10
Temperature °C	-5 ... +50
Flow rate at 6 bar with $\Delta p=1$ (NI/min)	620
Orifice size (mm)	6
Working ports size	G1/8"

TYPE	
1 32 = 3 ways, 2 positions	
52 = 5 ways, 2 positions	

Operating force 33 N



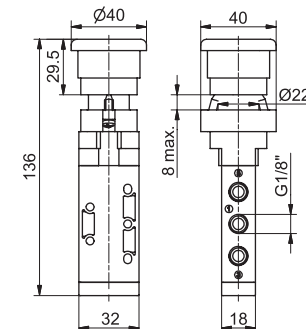
3/2 ways



Weight 210 g

T228.32.6.25

5/2 ways



Weight 202 g

T228.52.6.25