



# Valves and solenoid valves poppet system Series PG - for compressed air - G1" - 1" NPT

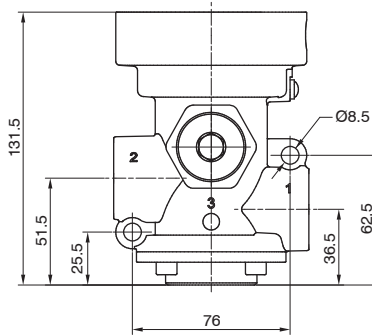
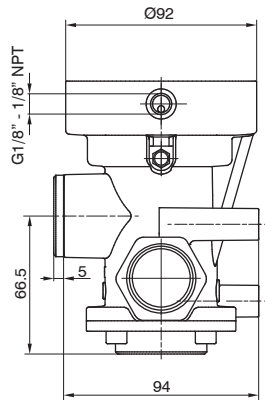
## Pneumatic - Spring

Coding: PC1A<sup>N</sup>11E<sup>F</sup>00000

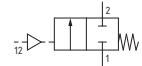
### Operational characteristics

Fluid	Filtered air. No lubrication needed, if applied it shall be continuous
Max. working pressure (bar)	10
Minimum pilot pressure (bar)	2,5
Temperature °C	-5 ... +70
Flow rate at 6 bar with Δp=1 (NI/min)	12500
Orifice size (mm)	25
Working ports size	G1" - 1" NPT
Pilot ports size	G1/8" - 1/8" NPT

CONNECTIONS	
<b>C</b>	<b>G</b> = Gas thread
	<b>N</b> = NPT thread
WAYS NUMBER	
<b>N</b>	<b>2</b> = 2 ways, 2 positions
	<b>3</b> = 3 ways, 2 positions
FUNCTION	
<b>F</b>	<b>A</b> = Normally Open (only for 3 ways)
	<b>C</b> = Normally Closed



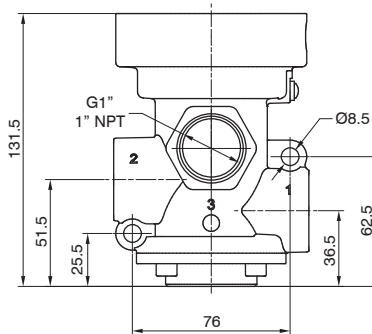
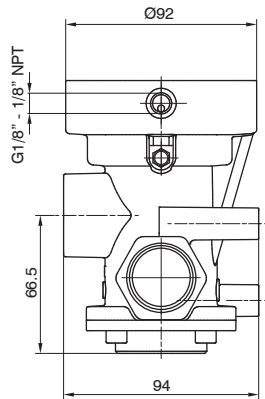
**N.C.**  
Inlet port 1  
Outlet port 2  
Exhaust port 3 (closed)



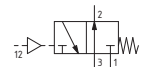
Weight 1231,5 g

PC1A211E00000

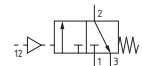
3/2



**N.O.**  
Inlet port 3  
Outlet port 2  
Exhaust port 1



**N.C.**  
Inlet port 1  
Outlet port 2  
Exhaust port 3



Weight 1139,5 g

PC1A311E00000