

HYDRAULIC ACTUATOR

DOUBLE ACTING TYPE

SHA/D

WORKING PRESSURE: 6.0 MPa to 12.5 MPa

WORKING TEMPERATURE:

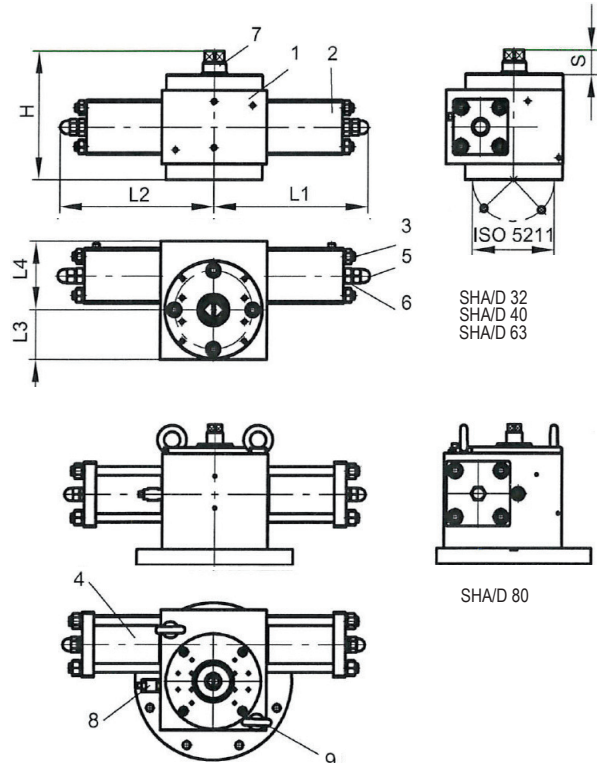
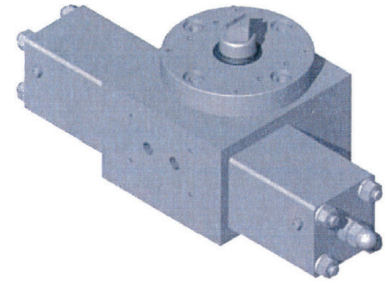
NBR O-Rings (standard) -20°C to 70°C
 Viton O-Rings (optional) -40°C to 145°C

HYDRAULIC OIL: Viscosity range 15 to 64 cSt. acc. to thermal environment

TECHNICAL DATA:

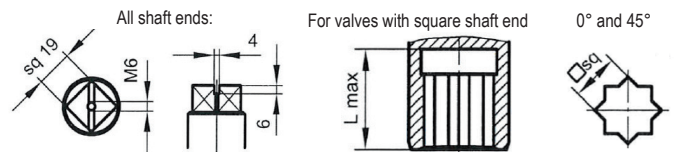
Rotation: 90° ± 3°
 Closing direction: Clockwise
 Painting 32-63: 2-comp. epoxy primer
 Painting 80: 1-comp. thick film epoxy coat.
 Male stud coupling: OD8 to OD12
 Two pcs. quick couplings for emergency operation
 Two pcs. throttle valve for speed regulation

- OPTIONS:**
- Male stud coupling in stainless steel.
 - Electric limit switches IP 65, IP 68, or IP 67 Eex.
 - Proximity switches IP 68.
 - Position indication by analog transmitter or potentiometer.
 - Set for submerged installation.
 - Electro-hydraulic aggregate.
 - Special coating for wet conditions.



Item	Part	Material 1	Material 2
1	Body ¹⁾	EN-GJL250	EN-GJS400-18
2	Cover ¹⁾	EN-GJL250	EN-GJS400-18
3	Tie Bolts	Stainless Steel	42CrMo4
4	Cylinder	Steel	Stainless Steel
5	Cap Nuts	Stainless Steel	Stainless Steel
6	Hexagonal Nuts	Stainless Steel	Stainless Steel
7	Shaft	Stainless Steel	Stainless Steel
8	Check Valve	Stainless Steel	Stainless Steel
9	Lifting Eyes ²⁾	Steel	Steel

1) Material of Body and Cover for SHA/D 32: 9S20K.
 2) Provided only for SHA/D 80.



FOR MOUNTING ON FLANGES ACCORDING TO ISO 5211

Size	Torque (Nm) ²⁾	Stroke volume (cm ³)	L1	L2	L3	L4	H	S	ISO 5211	Weight (Kg)
32	120	30	143	143	40	72	137	46	F05/F07	9
40	400	68	196	196	63	88	165	36.5	F07/F10 or F12	25
63	1000	169	196	196	63	94	174	36.5	F10/F14 or F12 or F16	30
80	2600	473	280	280	90	132	261	36	F14 or F16	90

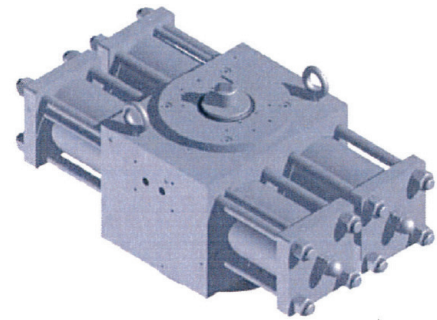
2) For control pressure 10.5 MPa.

SHAFT CONNECTION

Size	□sq						L _{max}
32	9	10	11	12	14	-	34
40	14	16	17	19	22	27	40
63	22	24	27	30	-	-	40
80	24	27	30	36	40	-	60

HYDRAULIC ACTUATOR

DOUBLE ACTING TYPE



WORKING PRESSURE: 6.0 MPa to 12.5 MPa

WORKING TEMPERATURE:

NBR O-Rings (standard) -20°C to 70°C

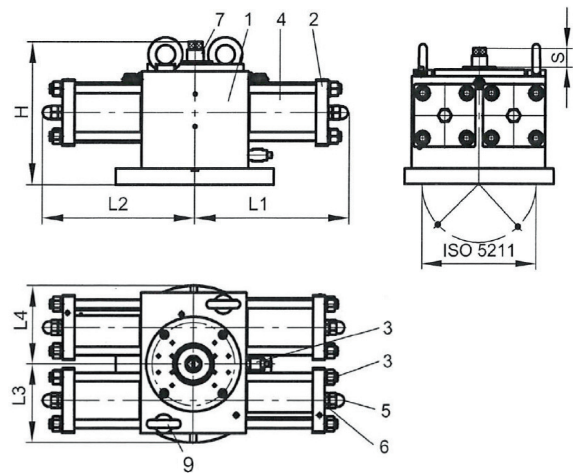
Viton O-Rings (optional) -40°C to 145°C

HYDRAULIC OIL: Viscosity range 15 to 64 cSt. acc. to thermal environment.

TECHNICAL DATA:

- Rotation: 90° ± 3°
- Closing direction: Clockwise
- Painting 70: 2-comp. epoxy primer
- Painting 160-200: 1-comp. thick film epoxy coat.
- Male stud coupling: OD8 to OD12
- Two pcs. quick couplings for emergency operation
- Two pcs. throttle valve for speed regulation
- Lifting eyes for handling
- Two pcs. internal oil filters

- OPTIONS:**
- Male stud coupling in stainless steel.
 - Electric limit switches IP 65, IP 68, or IP 67 Eex.
 - Proximity switches IP 68.
 - Position indication by analog transmitter or potentiometer.
 - Set for submerged installation.
 - Electro-hydraulic aggregate.
 - Special coating for wet conditions.



Item	Part	Material 1	Material 2
1	Body	EN-GJL250	EN-GJS400-18
2	Cover	Steel	Steel
3	Tie Bolts	Stainless Steel	42CrMo4
4	Cylinder	Steel	Stainless Steel
5	Cap Nuts	Stainless Steel	Stainless Steel
6	Hexagonal Nuts	Stainless Steel	Stainless Steel
7	Shaft	Stainless Steel	Stainless Steel
8	Check Valve	Stainless Steel	Stainless Steel
9	Lifting Eyes ¹⁾	Steel	Steel

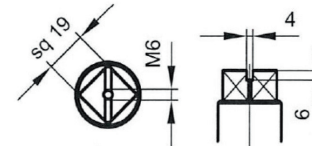
1) Only SHA/D 160 and 200.

For valves with square shaft end

0° and 45°



All shaft ends:



FOR MOUNTING ON FLANGES ACCORDING TO ISO 5211

Size	Torque ²⁾ (Nm)	Stroke volume (cm ³)	L1	L2	L3	L4	H	S	ISO 5211	Weight (Kg)
70	2000	338	219	210	93	123	172	36.5	F12 or F14	48
160	5200	946	282	282	145	145	260	36	F14 or F16 or F25	103
200	15700	2764	462	462	198	228	404	36	F25 or F30 or F40	371

2) For control pressure 10.5 MPa.

SHAFT CONNECTIONA

Size	□sq					L _{max}
70	22	24	27	30	-	40
160	24	27	32	36	40	60
200	Upon request					110