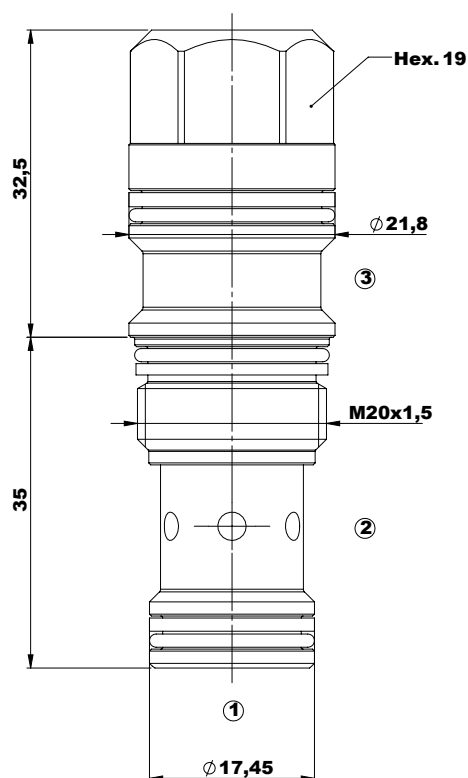
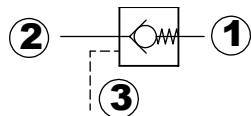


# Check Valves

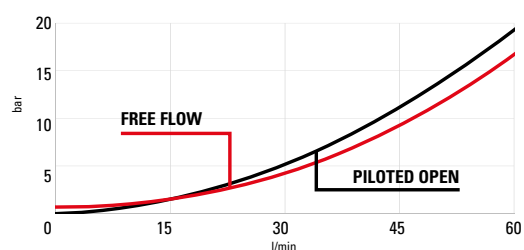
## P.O.Check T11A



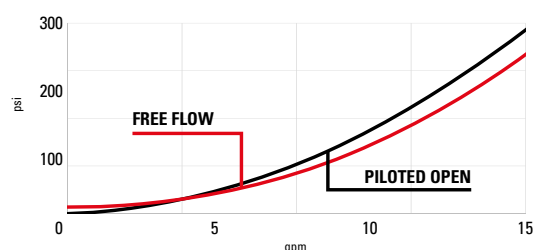
## Technical Details

cavity	T11A
capacity	60 lpm (15 gpm)
max operating pressure	350 bar (5000 psi)
pilot ratio	3:1
maximum valve leakage at reseal	5 drops/min
operating characteristic	standard
valve hex size (mm)	19
valve installation torque	45-50 Nm (33-37 lbf ft)
valve weight	0,13 kg (0,27 lbs)
external component surface treatment	zinc plating
seal kit (nbr)	S00T11ASN90000
seal kit (viton)	S00T11ASV90000
temperature range	-30 to 100°C (-22 to 212°F) with BunaN seals;
fluids	Mineral based or synthetics oil with lubricating properties at viscosities of 5 to 800 mm <sup>2</sup> /s (cSt)
filtration	Nominal value max. 10 µm (NAS 8) ISO 4406 19/17/14

- Backpressure at port 2 adds to the effective relief setting of the valve
- Declared reseal value is obtained with valve set @ maximum setting
- This valve is not provided with positive seals on pilot section



Performance curves



C | 6 | 2 | 2 | 0 | 2 | 3 | 6 | 0 | T | 1 | 1 | 0 | 0 | A

The information contained in this page is valid at the time of going to print. Valvole Italia reserves the right to modify its products without notice and does not accept liabilities for damages incurred as a consequence of these changes. To make sure you are seeing the latest product information, please visit [www.valvoleitalia.it](http://www.valvoleitalia.it)

