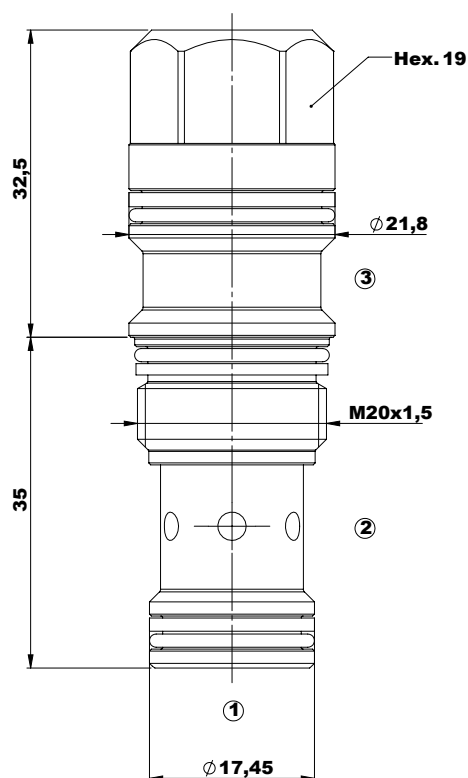
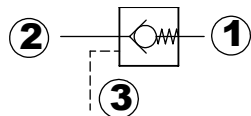


Check Valves

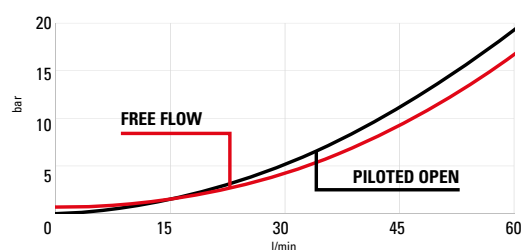
P.O.Check T11A SP



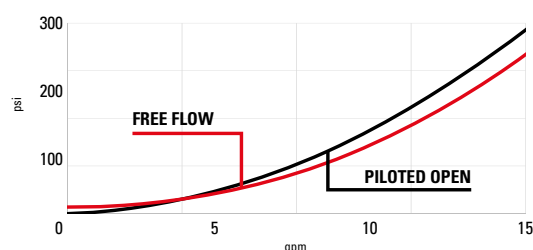
Technical Details

| | |
|--------------------------------------|---|
| cavity | T11A |
| capacity | 60 lpm (15 gpm) |
| max operating pressure | 350 bar (5000 psi) |
| pilot ratio | 3:1 |
| maximum valve leakage at reseal | 5 drops/min |
| operating characteristic | standard |
| valve hex size (mm) | 19 |
| valve installation torque | 45-50 Nm (33-37 lbf ft) |
| valve weight | 0,13 kg (0,27 lbs) |
| external component surface treatment | zinc plating |
| seal kit (nbr) | S00T11ASN90000 |
| seal kit (viton) | S00T11ASV90000 |
| temperature range | -30 to 100°C (-22 to 212°F) with BunaN seals; |
| fluids | Mineral based or synthetics oil with lubricating properties at viscosities of 5 to 800 mm ² /s (cSt) |
| filtration | Nominal value max. 10 µm (NAS 8) ISO 4406 19/17/14 |

- Backpressure at port 2 adds to the effective relief setting of the valve
- Declared reseal value is obtained with valve set @ maximum setting
- This valve is provided with positive seals on pilot section



Performance curves



C | 6 | S | 2 | 0 | 2 | 3 | 6 | 0 | T | 1 | 1 | 0 | 0 | A

The information contained in this page is valid at the time of going to print. Valvole Italia reserves the right to modify its products without notice and does not accept liabilities for damages incurred as a consequence of these changes. To make sure you are seeing the latest product information, please visit www.valvoleitalia.it

