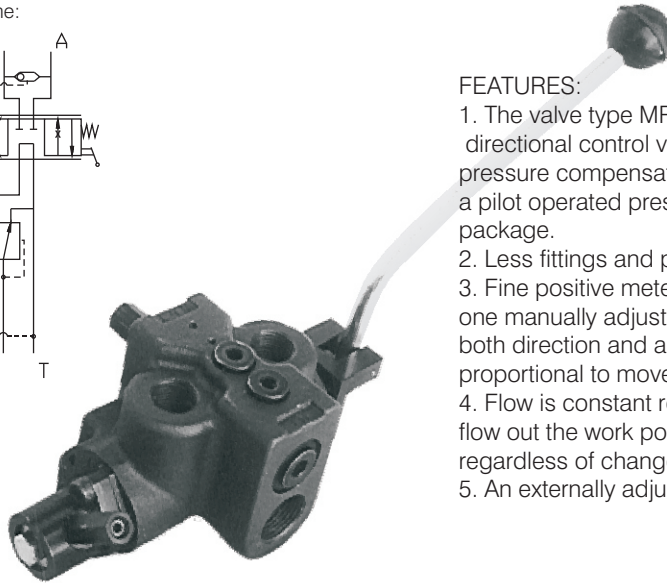
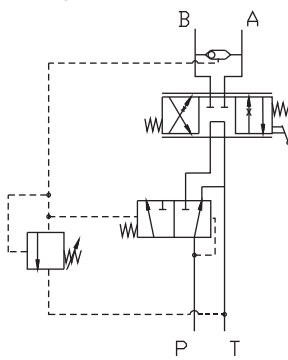


MONOBLOCK DIRECTIONAL CONTROL VALVE TYPE MRP 70

TECHNICAL DATA

DATA	UNIT	VALUE/RANGE
Rated flow	l/min (US GPM)	70 (18)
Rated pressure	bar (PSI)	210 (3000)
Standard port size: Inlet & outlet work ports A & B	BSP BSP	3/4" 1/2"
Working liquid - hydraulic oils with parameters: -viscosity -recommended viscosity -temperature -degree of filtration	mm ² /sec (cSt) mm ² /sec (cSt) °C (°F) mm (in)	15...300 20...80 -20...+80 (-4...+176) 0.025 (9.8 10 ⁻⁴)

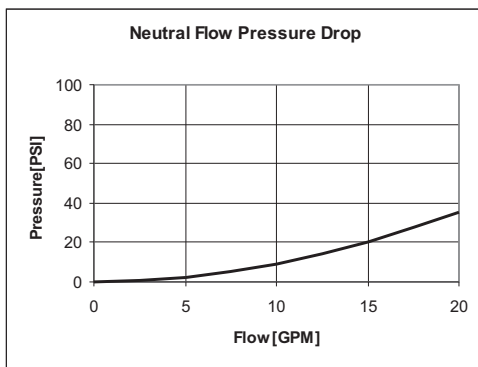
Hydraulic scheme:



FEATURES:

1. The valve type MRP 70 incorporates the features of a 4-way directional control valve, an adjustable full range pressure compensated by-pass type flow control valve and a pilot operated pressure relief valve all in one compact package.
2. Less fittings and plumbing, eliminates leakage points.
3. Fine positive metering is possible in either direction with one manually adjustable, infinitely variable lever controlling both direction and amount of flow. Amount of flow is proportional to movement of the lever.
4. Flow is constant regardless of pressure variations, thus flow out the work port remains smooth and constant regardless of changes in load conditions.
5. An externally adjustable pilot relief is standard.

PERFORMANCE CURVE



CONDITIONS:
 $\Delta P = f(Q)$
 36 cSt oil viscosity
 T = 40°C (104°F)

In this curve the pressure difference between the inlet and outlet is shown.

DIMENSIONS

Dimensions: All dimensions are in mm (in).

