

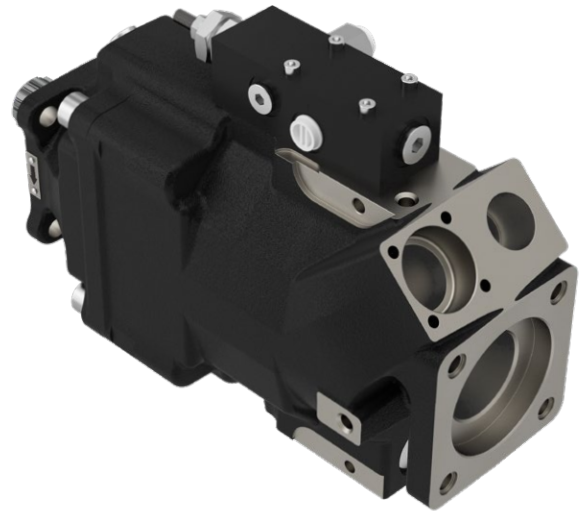
# VARIABLE AXIAL PISTON PUMP - VP1

## 95/110/130 With Through Drive

**VP1 Axial Piston Pump:** Elevate your mobile hydraulics! Unlock the full potential of your hydraulic systems with the VP1 axial piston pump. Designed specifically for open circuits in mobile hydraulics, this pump operates seamlessly according to the swash plate principle, ensuring optimal performance and efficiency.

**New Feature!** The VP1 is now available with an innovative thru-shaft option, allowing you to operate additional hydraulic pumps in series. This enhancement not only increases versatility but also maximizes your system's capabilities.

Upgrade to the VP1 axial piston pump today and experience the perfect blend of reliability and advanced engineering for your mobile hydraulic applications.



### Features and benefits:

- Optimized power-to-weight ratio
- Slim design
- Thru-shaft compatibility
- High selfpriming speed

### Intended applications:

- Municipal trucks
- Loading cranes and elevating work platforms
- Tipper trucks and skip trucks
- Suction dredgers and sewer cleaning vehicles
- Refuse collection vehicles

Frame size VP1 -	095	110	130
Displacement [cm <sup>3</sup> /rev]	95	110	128
Max operating pressure [bar]			
continuous	400	400	400
intermittent	420	420	420
Mass moment of inertia J [kgm <sup>2</sup> ]	0.00696	0.00705	0.00705
Shaft speed [rpm]			
short circuited pump (low press.)	3000	3000	3000
max. selfpriming speed	2300	2200	2100
Max input torque [Nm]	900	900	900
Max through drive torque [Nm]	720	720	720
Control type	LS		
Shaft end spline	DIN 5462		
Through drive spline	DIN 5462		
Mounting flange	ISO 7653-1985		
Weight (with control) [kg]	32		

Part number	Product code
3723519	VP1-095-RA-ZP-T-000-350/25-LS
3723520	VP1-095-LA-ZP-T-000-350/25-LS
3723521	VP1-110-RA-ZP-T-000-350/25-LS
3723522	VP1-110-LA-ZP-T-000-350/25-LS
3724134	VP1-130-RA-ZP-T-000-350/25-LS
3724135	VP1-130-LA-ZP-T-000-350/25-LS

Parker Hannifin Manufacturing Sweden AB  
**Pump & Motor Division Europe**  
Flygmotorvägen 2  
461 38 Trollhättan  
Sweden

© 2024 Parker Hannifin Corporation

