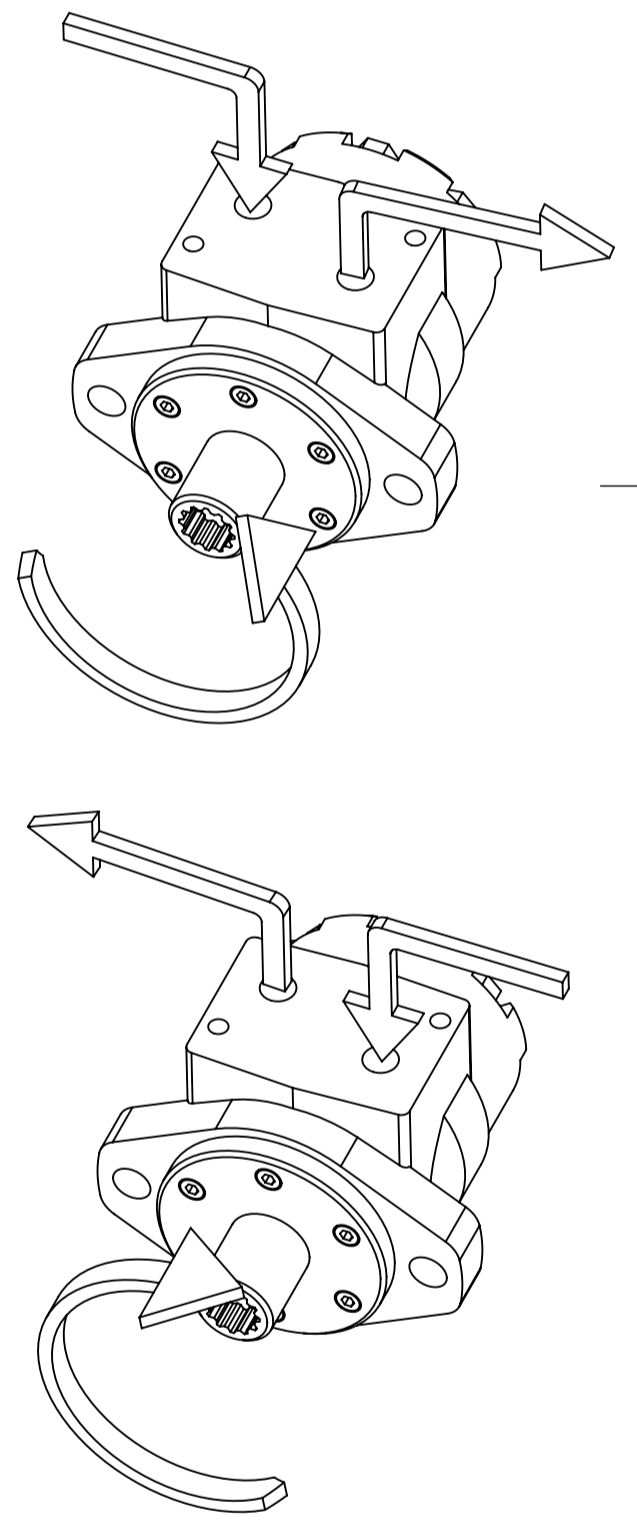
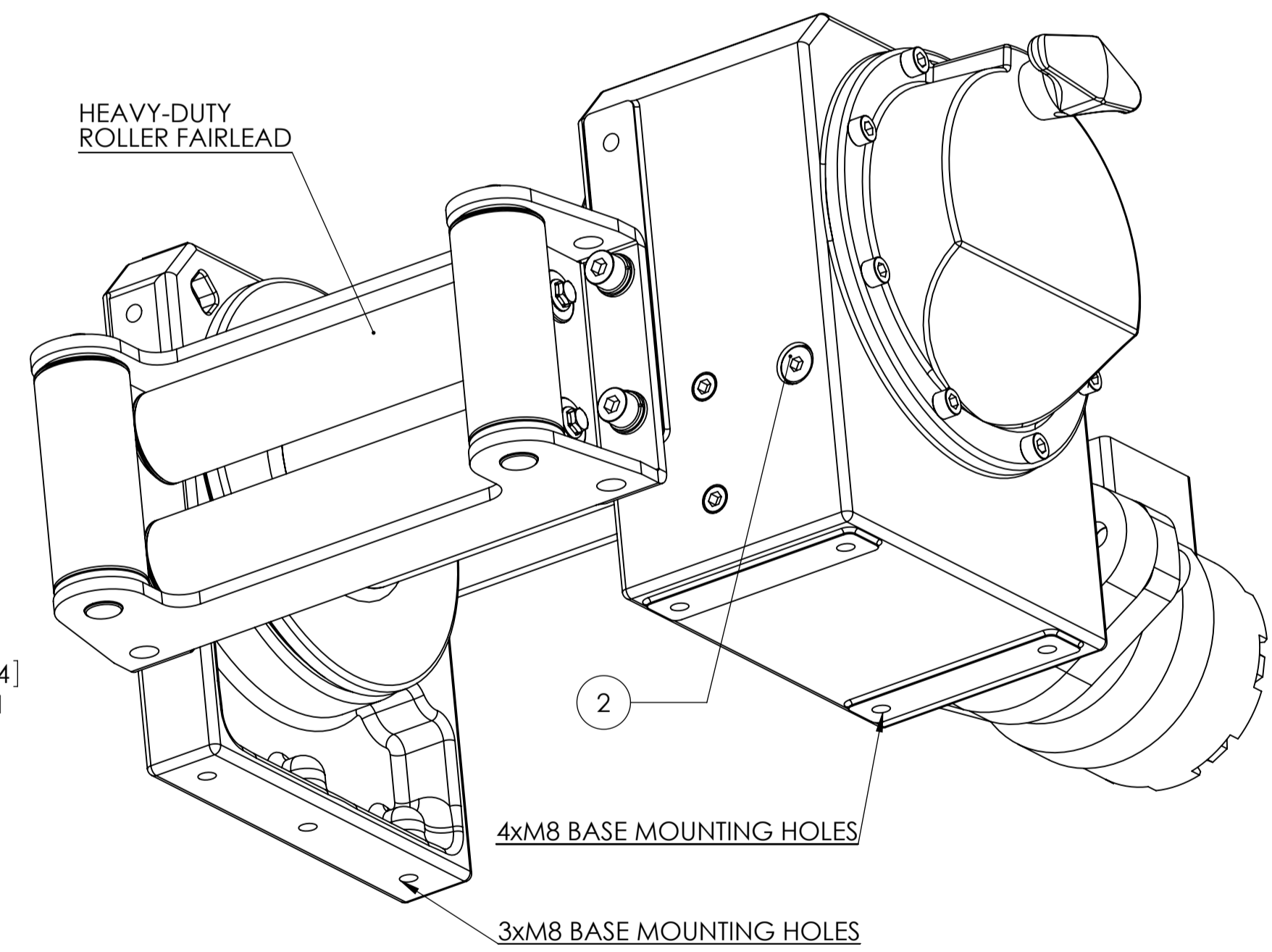
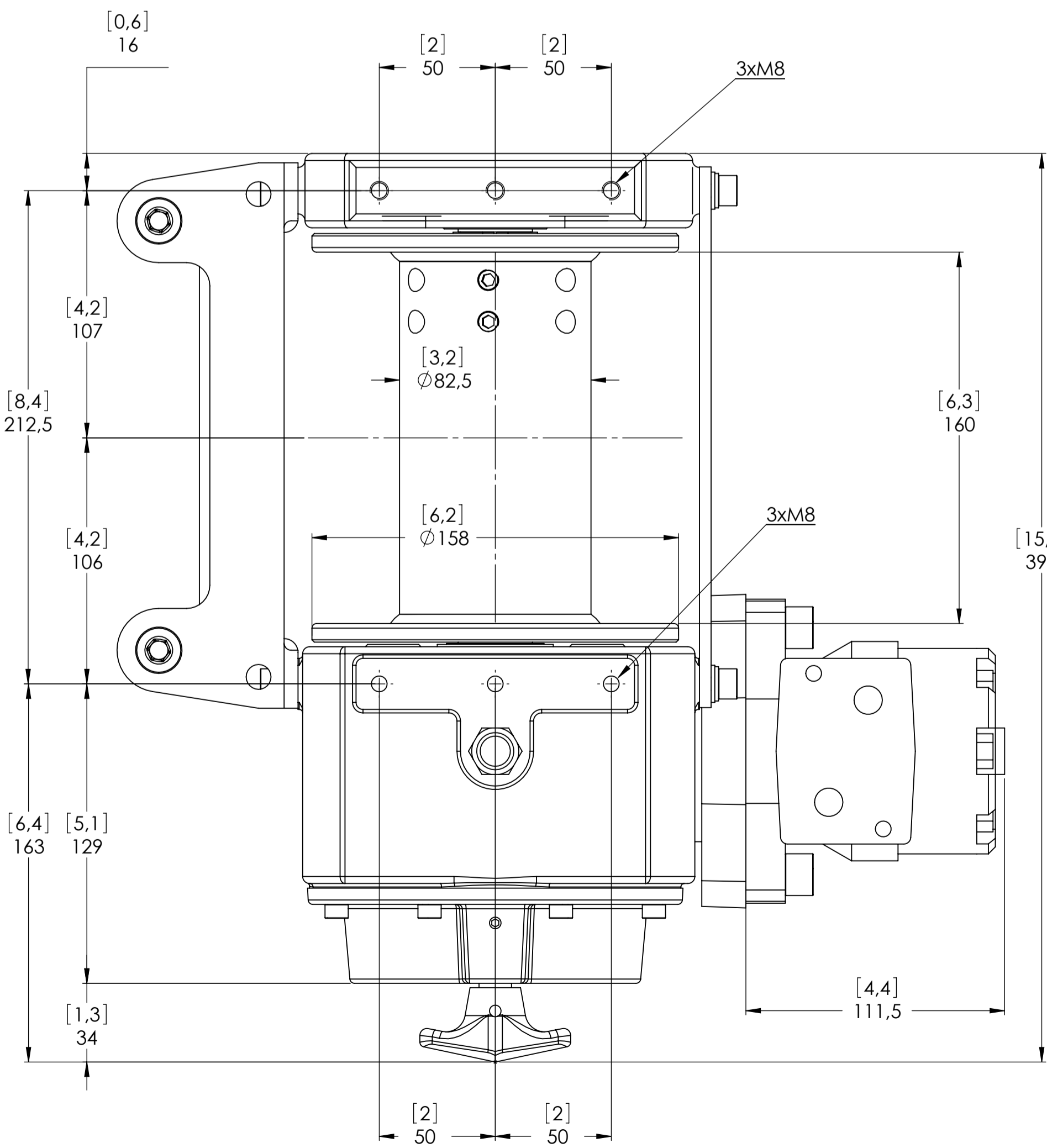
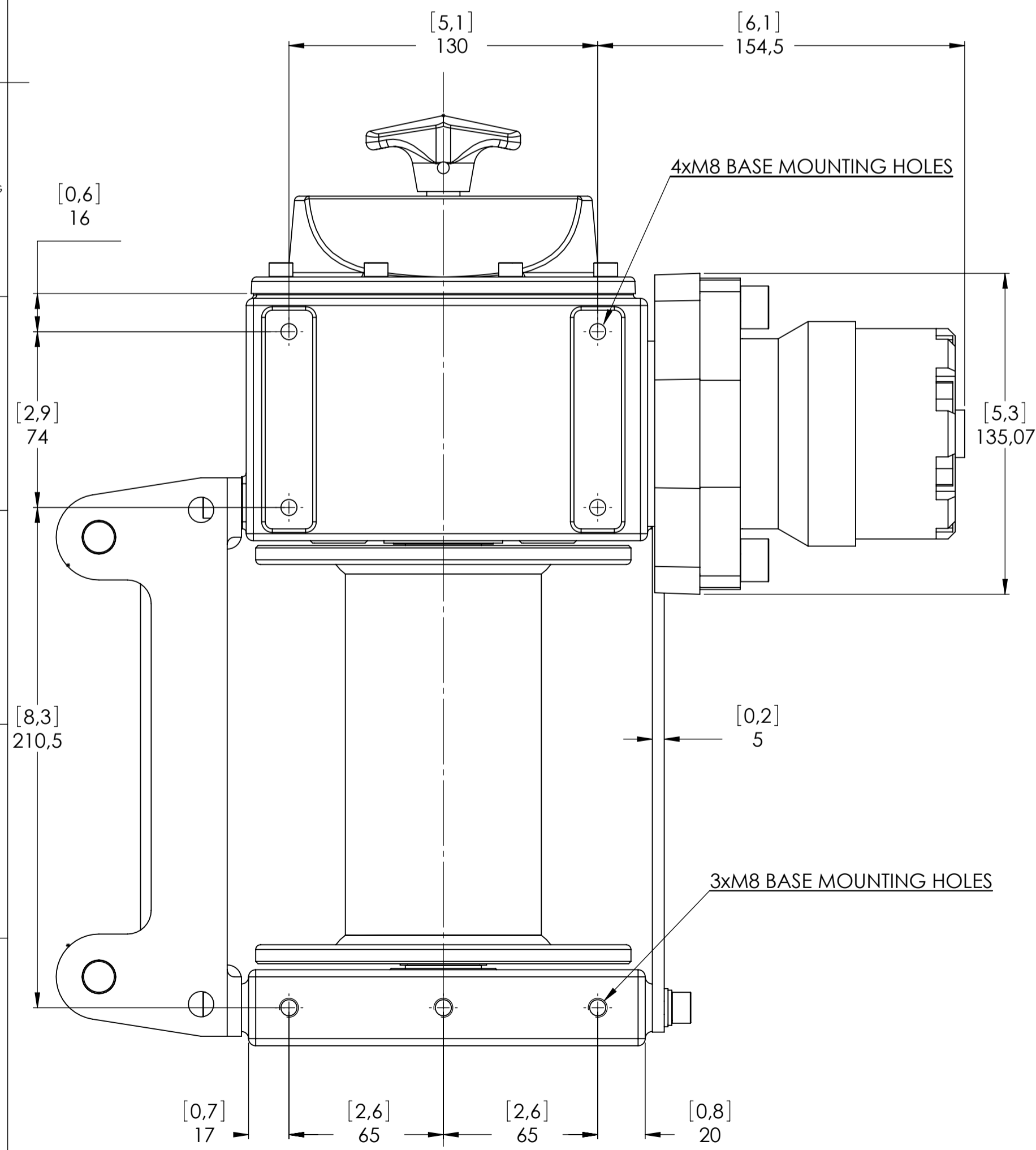
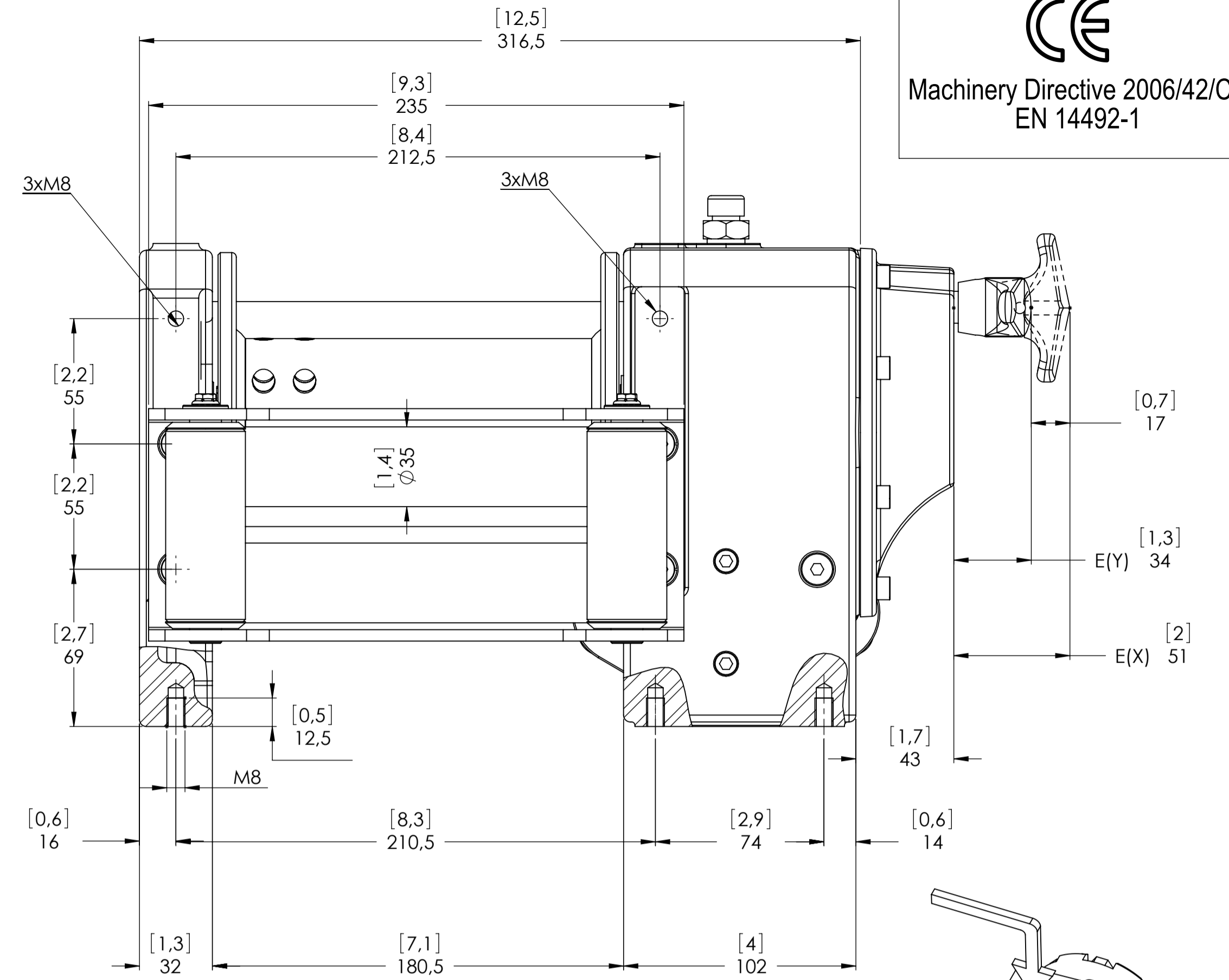
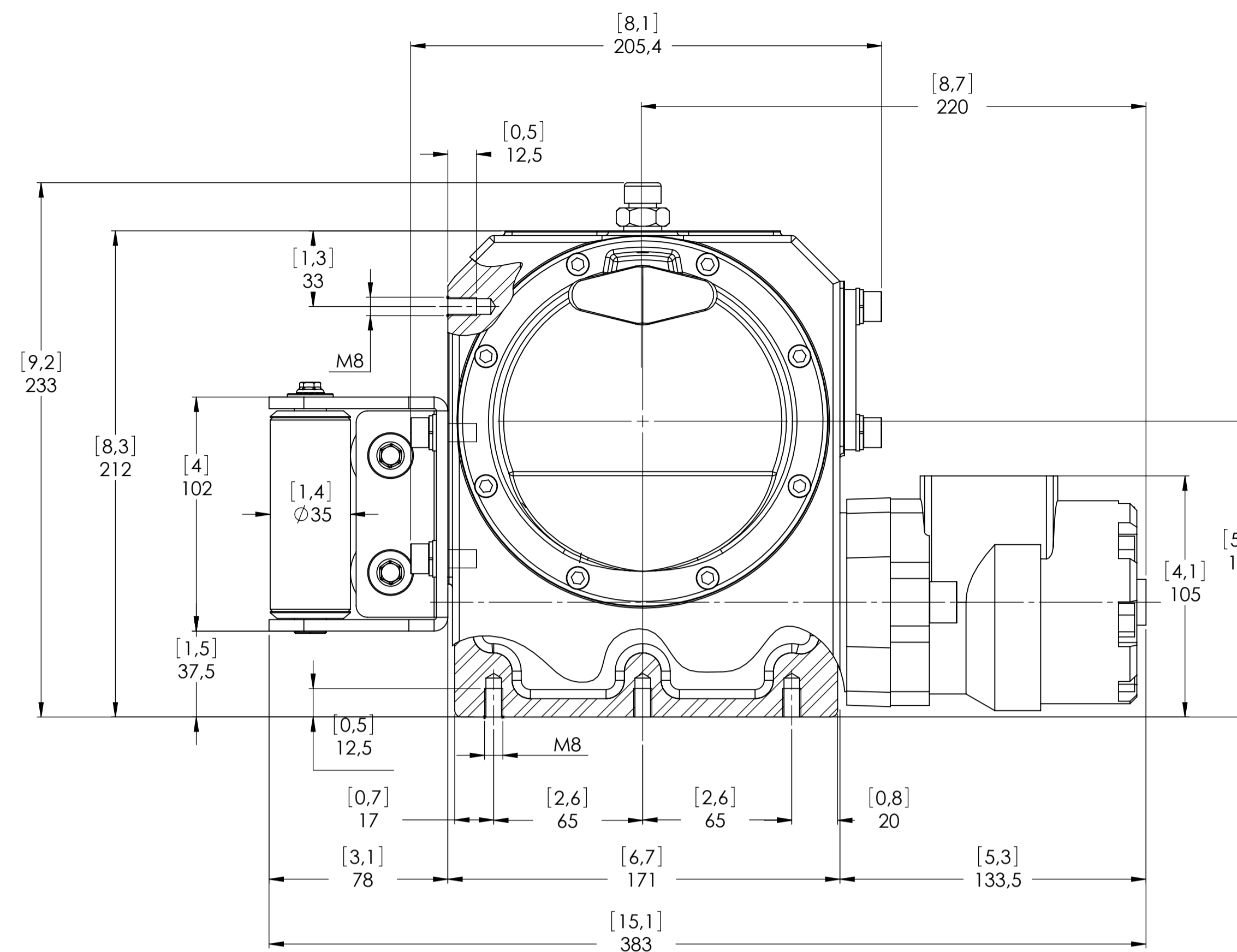
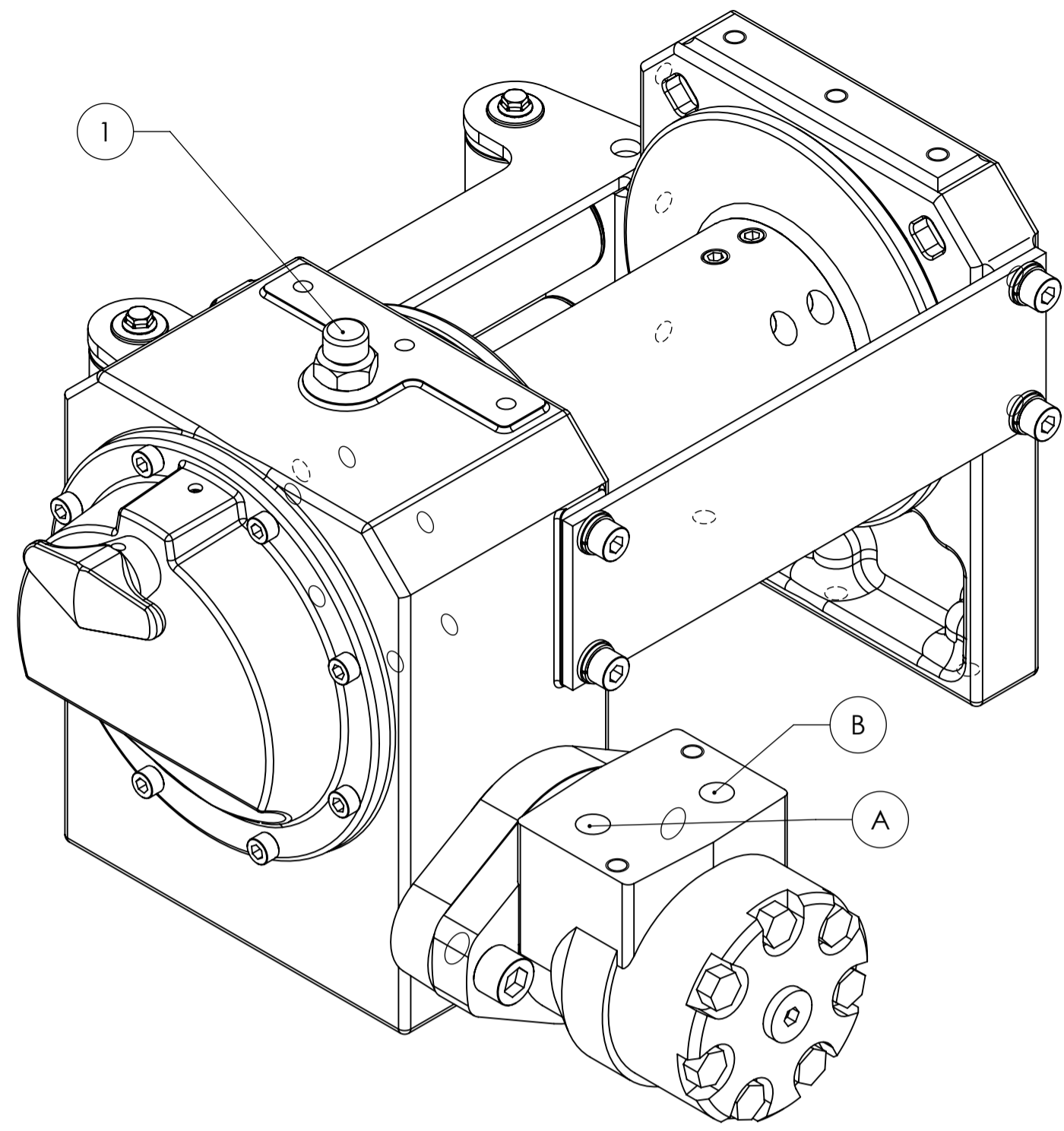


Machinery Directive 2006/42/CE
EN 14492-1



| CONNECTIONS | |
|-------------|------------|
| A | 1/2" G |
| B | 1/2" G |
| C | ----- |
| E (X) | DISENGAGED |
| E (Y) | ENGAGED |

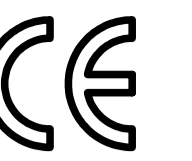
| WINCH MODEL | ZHC | WINCH GROUP | WORM GEAR | PLUGS |
|--------------------------|-------------------|--|--------------|-----------------------------------|
| Pulling capacity | 2200(3000) Kg | Date | Modification | 1.Fill 3/8" G |
| Max.Oil flow | 40 Lt./Min. | | | 2.Level 3/8" G |
| Speed Line - first layer | 5.5(4.2) Mt./Min. | | | 3.Drain |
| Speed Line - top layer | 9.4(7.5) Mt./Min. | DANGEROUS: Do not use winch to lift support or transport personnel. | | |
| | | | | SCALE 1:1.7 |
| | | | | WEIGHTS |
| | | | | Winch (without oil) 23 Kg |
| | | | | Heavy-duty Roller fairlead 3.9 Kg |
| | | | | Rope tensioner ----- |
| | | | | CODE ZHC22K50GR ZHC30K50GR |
| | | | | DATE 30/10/2013 |



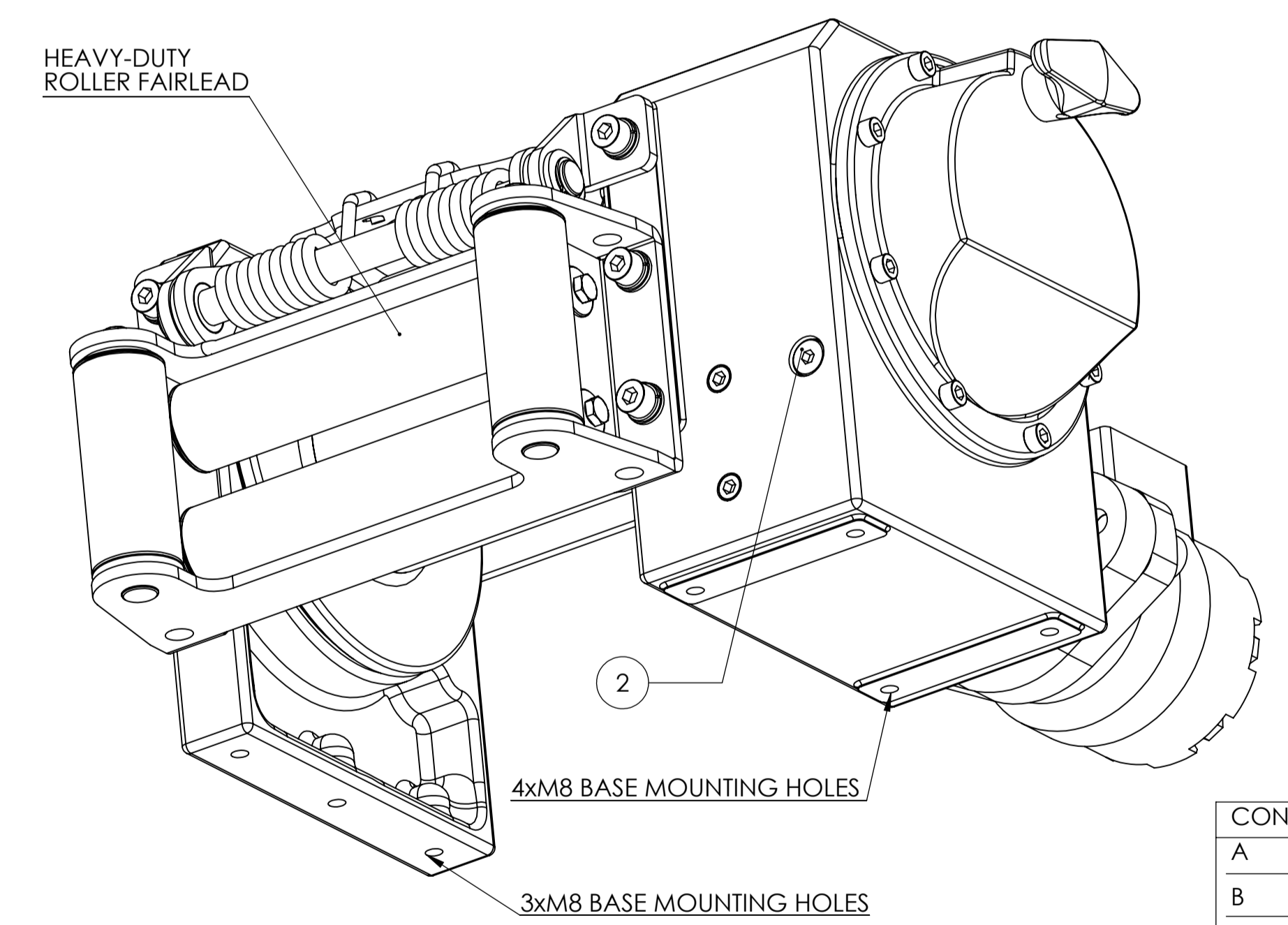
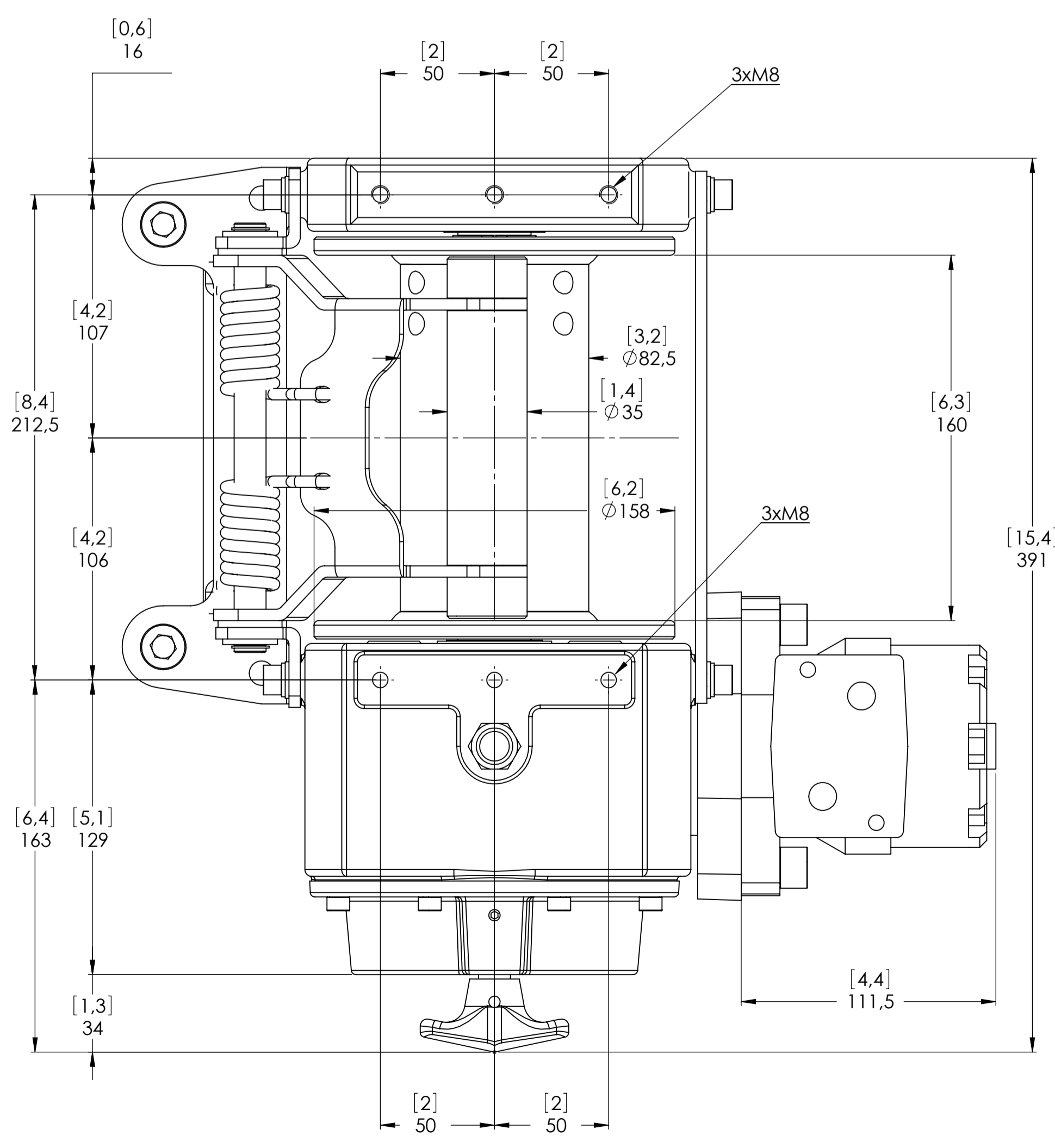
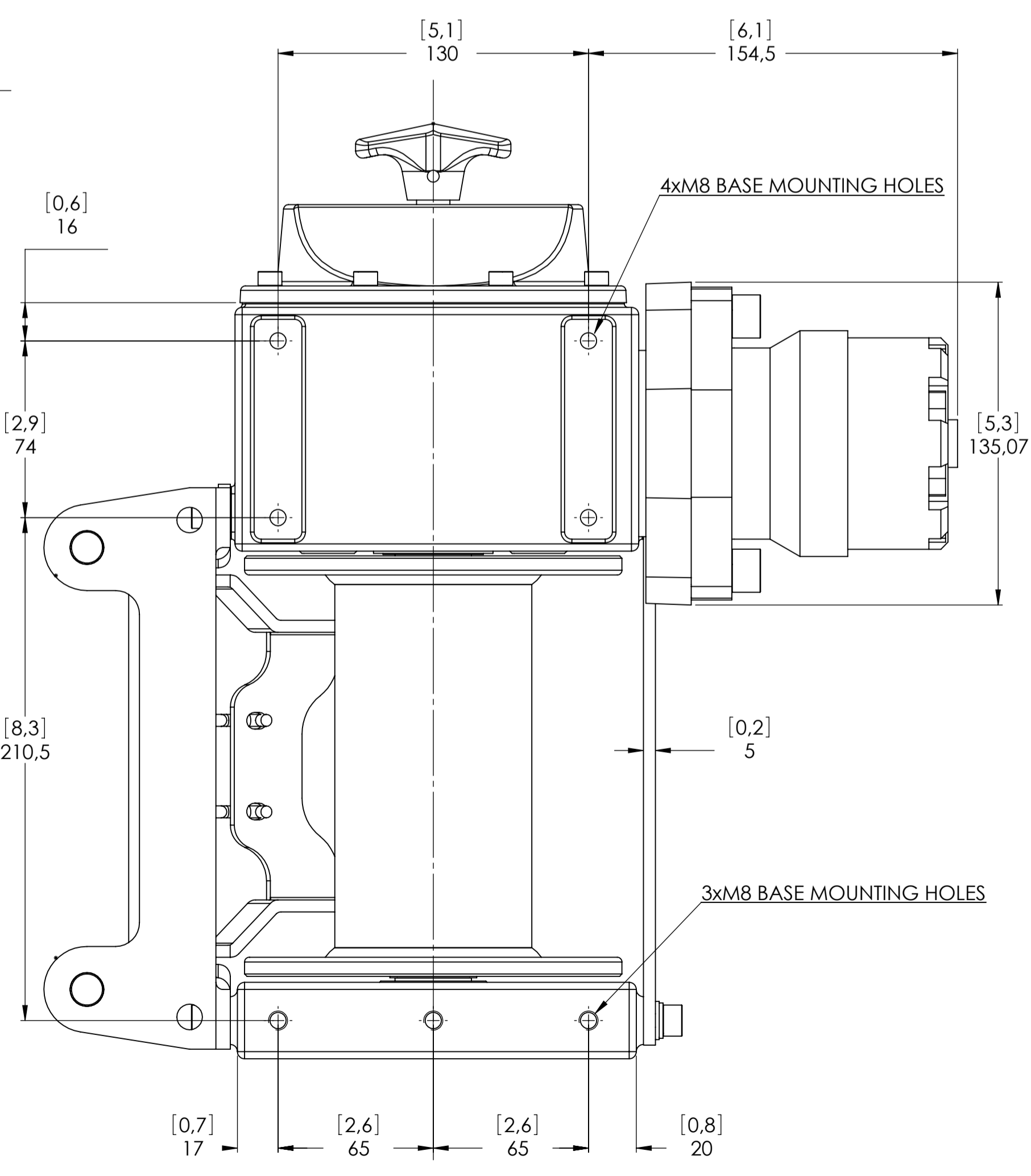
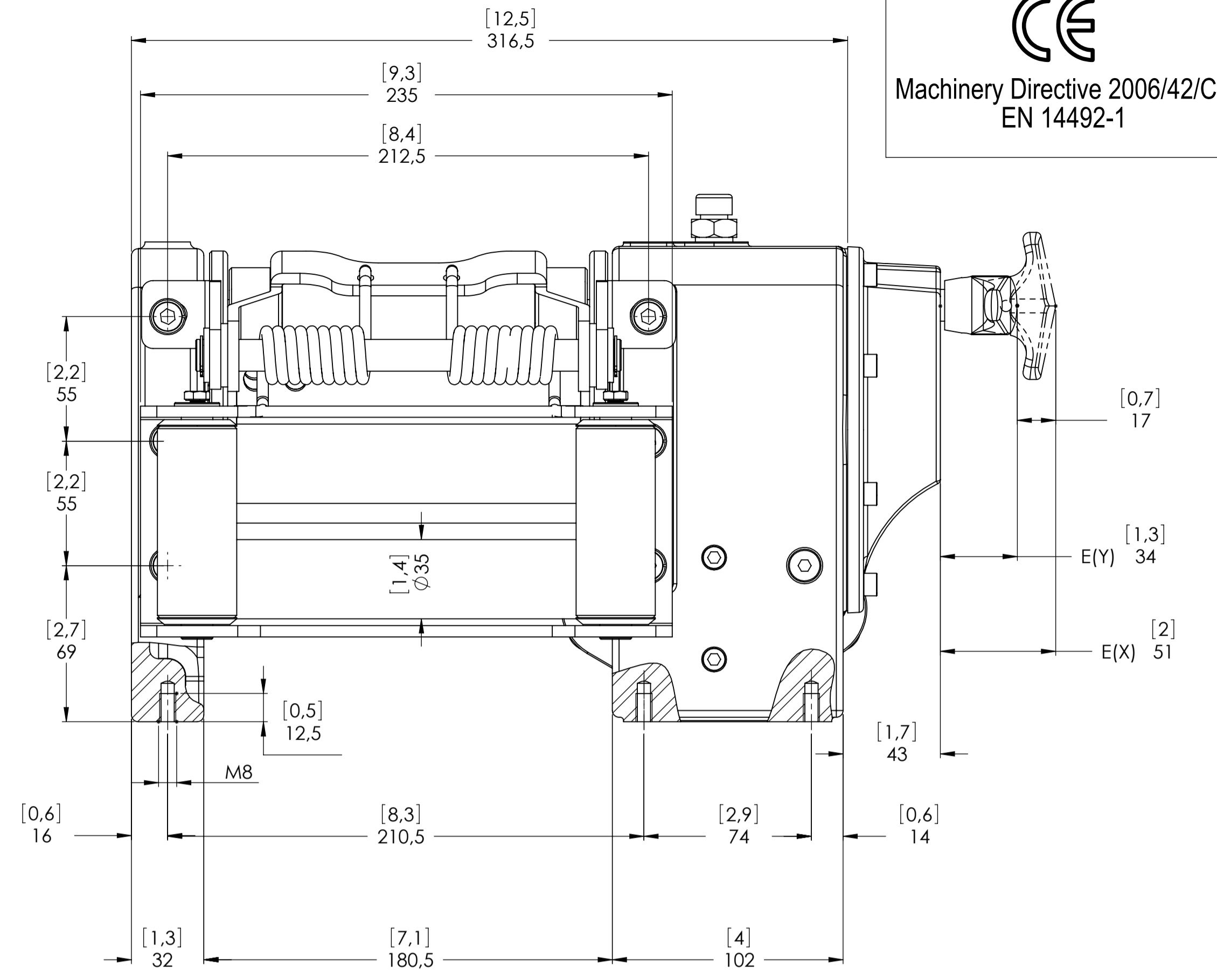
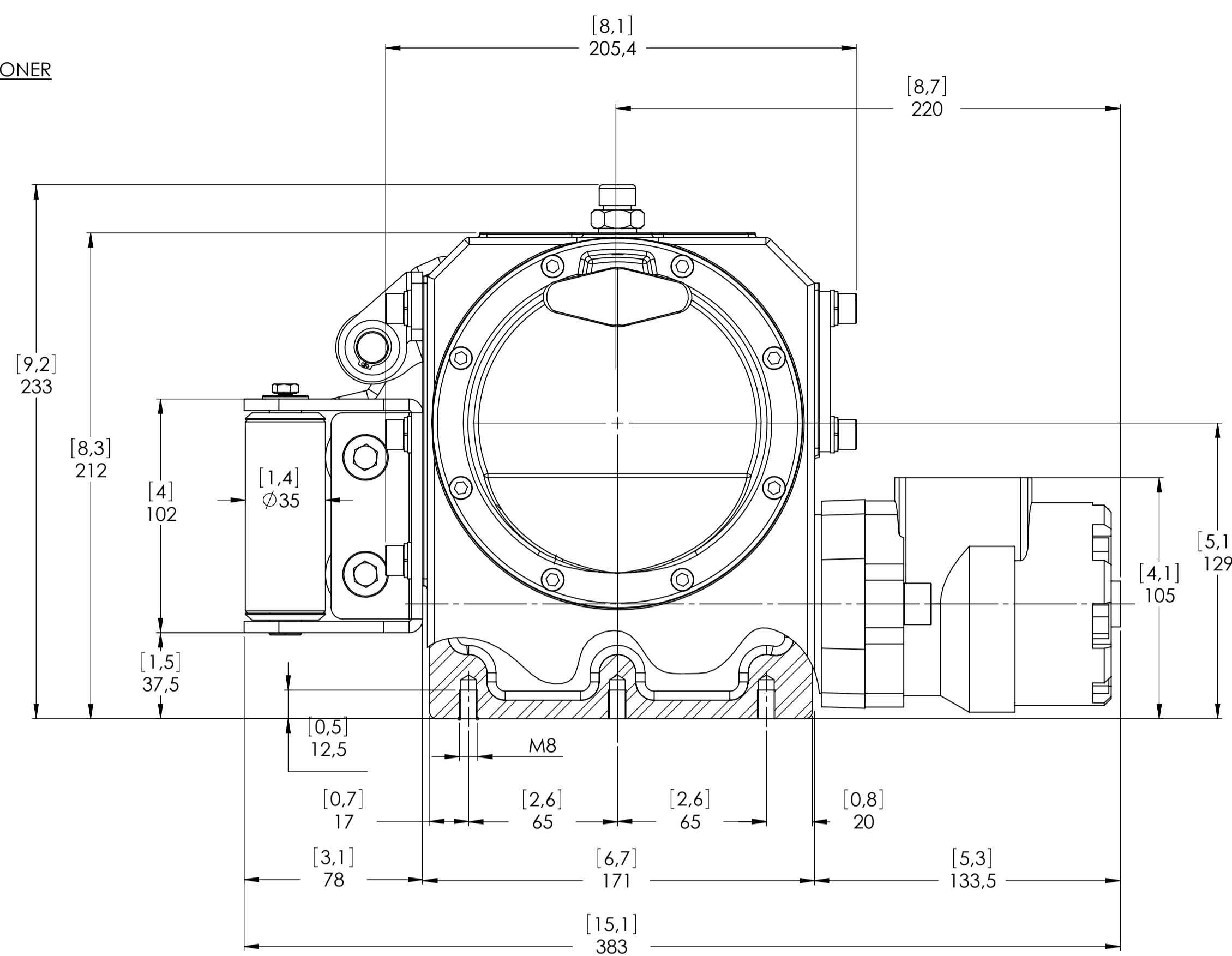
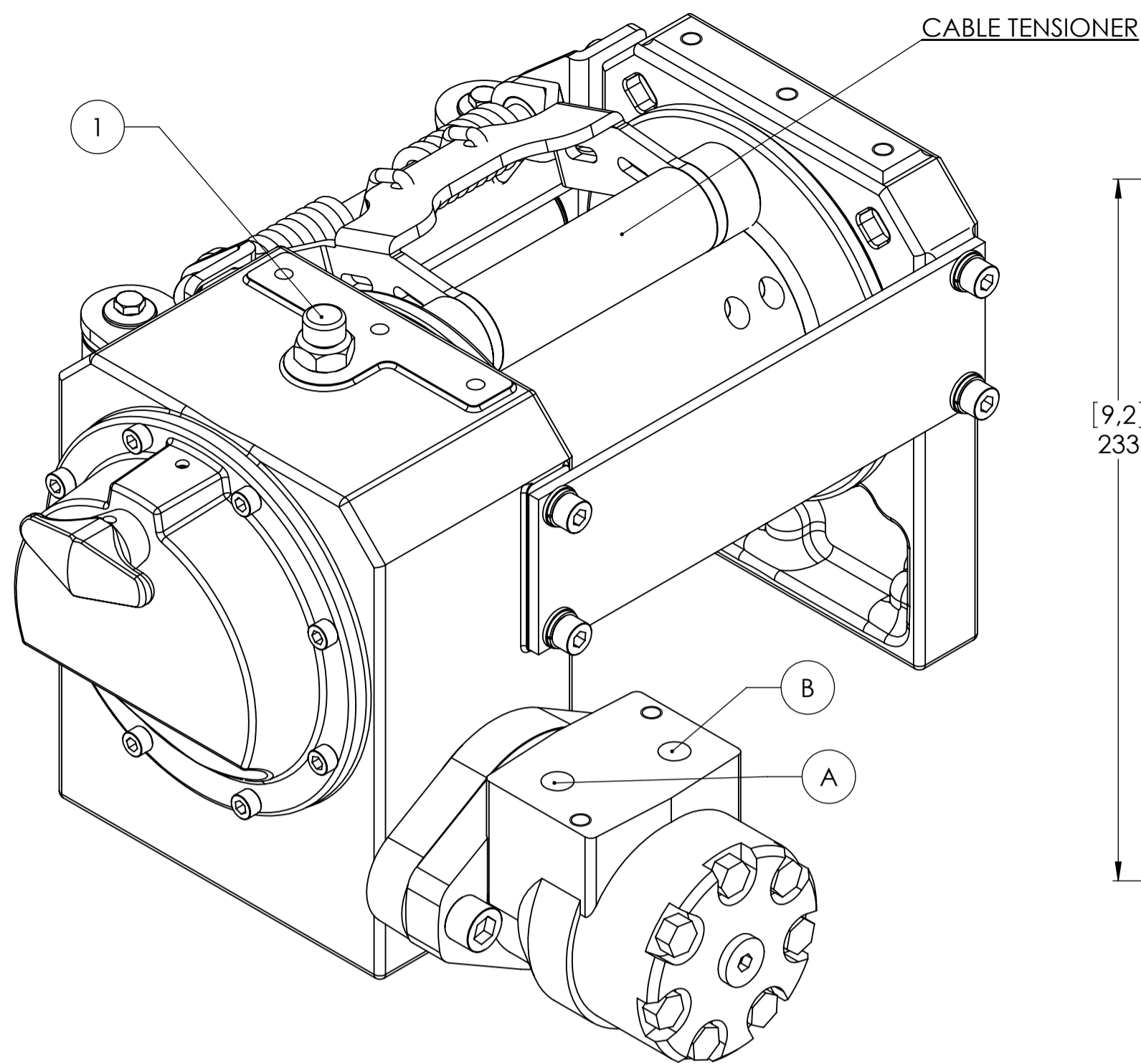
Funo - Bologna (Italy)
www.vimeindustrial.com

The Quality is Transparent

Gear ratio 1/38 (1/50)
Orbital hydr. motor 50 cc
Working pressure 130 bar
Drum size 160 mm
Drum clutch Manual



Machinery Directive 2006/42/CE
EN 14492-1



| CONNECTIONS | |
|-------------|------------|
| A | 1/2" G |
| B | 1/2" G |
| C | ----- |
| E (X) | DISENGAGED |
| E (Y) | ENGAGED |

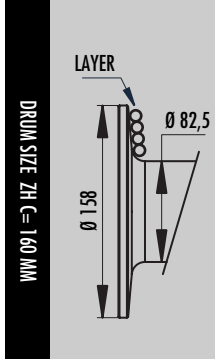
| | | | | |
|---|-------------------|--|--|-----------------------------------|
| WINCH MODEL | ZHC | WINCH GROUP | WORM GEAR | PLUGS |
| Pulling capacity | 2200(3000) Kg | Date | Modification | 1.Fill 3/8" G |
| Max.Oil flow | 40 Lt./Min. | | | 2.Level 3/8" G |
| Speed Line - first layer | 5.5(4.2) Mt./Min. | | | 3.Drain |
| Speed Line - top layer | 9.4(7.5) Mt./Min. | DANGEROUS: Do not use winch to lift support or transport personnel. | | |
| | | | | SCALE 1:1.7 |
| | | | | WEIGHTS |
| | | | | Winch (without oil) 23 Kg |
| | | | | Heavy-duty Roller fairlead 3,9 Kg |
| | | | | Rope tensioner 1,8 Kg |
| | | | | CODE ZHC22K50GRP ZHC30K50GRP |
| Funo - Bologna (Italy) www.vimeindustrial.com The Quality is Transparent | | | Gear ratio 1/38 (1/50) Orbital hydr. motor 50 cc Working pressure 130 bar Drum size 160 mm Drum clutch Manual DATE 19/11/2015 | |

1.4.1 ZHC 2200 WINCH TECHNICAL DATA

| RATIO | WIRE ROPE SIZE [MM] | LAYER | LINE PULL [KG] |
|-------|---------------------|-------|----------------|
| 38:1 | 8* | 1 | 2.200 |
| | | 2 | 1.870 |
| | | 3 | 1.625 |
| | | 4 | 1.440 |
| | | 5 | 1.290 |

| OIL SUPPLY [LT/MIN] | DRUM REVOLUTION [RPM] | LINE SPEED [MT/MIN] | | | | |
|---------------------|-----------------------|---------------------|-----|-----|-----|-----|
| | | 1 | 2 | 3 | 4 | 5 |
| 20 | 8,0 | 2,3 | 2,7 | 3,1 | 3,5 | 3,9 |
| 30 | 14,5 | 4,1 | 4,8 | 5,6 | 6,3 | 7,0 |
| 40 | 19,3 | 5,5 | 6,4 | 7,4 | 8,4 | 9,4 |


| | |
|---|-------|
| WIRE ROPE MINIMUM BREAKING LOAD EN 14492-1 [KG] | 4.400 |
|---|-------|




| LAYER | DRUM DIAMETER [MM] | | WIRE ROPE ON LAYER [MT] | | WIRE ROPE QUANTITY [MT] | |
|-------|--------------------|--------|-------------------------|--------|-------------------------|--------|
| | Ø 00 MM | Ø 8 MM | Ø 00 MM | Ø 8 MM | Ø 00 MM | Ø 8 MM |
| | 5 | - | 154,5 | - | 9,2 | - |
| 4 | - | 138,5 | - | 8,3 | - | 27,3 |
| 3 | - | 122,5 | - | 7,3 | - | 19,1 |
| 2 | - | 106,5 | - | 6,4 | - | 11,8 |
| 1 | - | 90,5 | - | 5,4 | - | 5,4 |
| 0 | - | 82,5 | - | - | - | - |

| WIRE ROPE CAPACITY [MT] | | MAX. WIRE ROPE CAPACITY EN 14492-1 [MT] | | MAX. WIRE ROPE CAPACITY [MT] | |
|-------------------------|--------|---|--------|------------------------------|--------|
| Ø 00 MM | Ø 8 MM | Ø 00 MM | Ø 8 MM | Ø 00 MM | Ø 8 MM |
| - | 15 | - | 19** | - | 36 |

| DESCRIPTION | WEIGHTS |
|-----------------------------|---------|
| | [KGS.] |
| WINCH (WITHOUT CABLE) | 23 |
| ACCESSORY : ROLLERFAILREAD | 3,9 |
| ACCESSORY : CABLE TENSIONER | 1,8 |

NOTE 

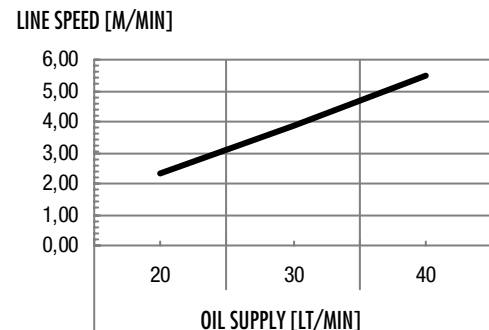
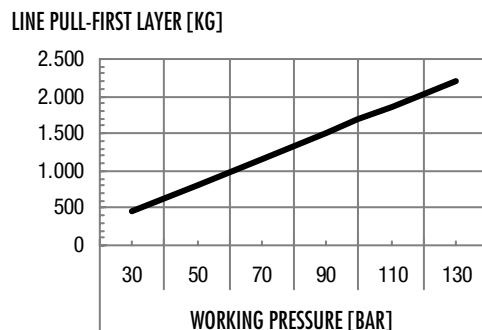
Specifications are subject to change without notification and without incurring obligation. Specifications in this publication are theoretical and may vary depending on hydraulic system, environment, etc.

NOTE 

*Wire rope size must be respected. Recommended wire rope min. tensile strength 2160 N/mm².
Wire rope minimum breaking load must be at least double of winch max. pulling capacity.

** Max. wire rope capacity according with EN 14492-1.

1.4.2 ZHC 2200 WINCH PERFORMANCE CHARTS AT THE 1ST LAYER

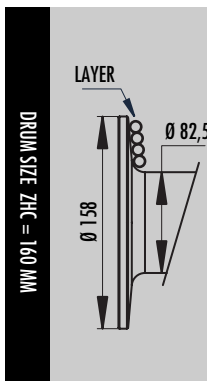


1.4.5 ZHC 3000 WINCH TECHNICAL DATA

| RATIO | WIRE ROPE SIZE [MM] | LAYER | LINE PULL [KG] |
|-------|---------------------|-------|----------------|
| 50:1 | 9* | 1 | 3.000 |
| | | 2 | 2.510 |
| | | 3 | 2.155 |
| | | 4 | 1.890 |
| | | 5 | 1.680 |

| OIL SUPPLY [LT/MIN] | DRUM REVOLUTION [RPM] | LINE SPEED [MT/MIN] | | | | |
|---------------------|-----------------------|---------------------|-----|-----|-----|-----|
| | | 1 | 2 | 3 | 4 | 5 |
| 20 | 6,1 | 1,8 | 2,1 | 2,4 | 2,8 | 3,1 |
| 30 | 10,9 | 3,2 | 3,8 | 4,4 | 5,0 | 5,6 |
| 40 | 14,7 | 4,2 | 5,0 | 5,9 | 6,7 | 7,5 |


| | |
|---|-------|
| WIRE ROPE MINIMUM BREAKING LOAD EN 14492-1 [KG] | 6.000 |
|---|-------|




| LAYER | DRUM DIAMETER [MM] | | WIRE ROPE ON LAYER [MT] | | WIRE ROPE QUANTITY [MT] | |
|-------|--------------------|-------|-------------------------|------|-------------------------|------|
| | 00 MM | 9 MM | 00 MM | 9 MM | 00 MM | 9 MM |
| | 5 | - | 163,5 | - | 8,6 | - |
| 4 | - | 145,5 | - | 7,7 | - | 25,1 |
| 3 | - | 127,5 | - | 6,7 | - | 17,4 |
| 2 | - | 109,5 | - | 5,8 | - | 10,6 |
| 1 | - | 91,5 | - | 4,8 | - | 4,8 |
| 0 | - | 82,5 | - | - | - | - |

| WIRE ROPE CAPACITY [MT] | | MAX. WIRE ROPE CAPACITY EN 14492-1 [MT] | | MAX. WIRE ROPE CAPACITY [MT] | |
|-------------------------|------|---|------|------------------------------|------|
| 00 MM | 9 MM | 00 MM | 9 MM | 00 MM | 9 MM |
| - | 15 | - | 17** | - | 26 |

| DESCRIPTION | WEIGHTS |
|-----------------------------|---------|
| | [KGS.] |
| WINCH (WITHOUT CABLE) | 23 |
| ACCESSORY : ROLLERFAILREAD | 3,9 |
| ACCESSORY : CABLE TENSIONER | 1,8 |

NOTE 

Specifications are subject to change without notification and without incurring obligation. Specifications in this publication are theoretical and may vary depending on hydraulic system, environment, etc.

NOTE 

*Wire rope size must be respected. Recommended wire rope min. tensile strength 2160 N/mm².
Wire rope minimum breaking load must be at least double of winch max. pulling capacity.

** Max. wire rope capacity according with EN 14492-1.

1.4.6 ZHC 3000 WINCH PERFORMANCE CHARTS AT THE 1ST LAYER

