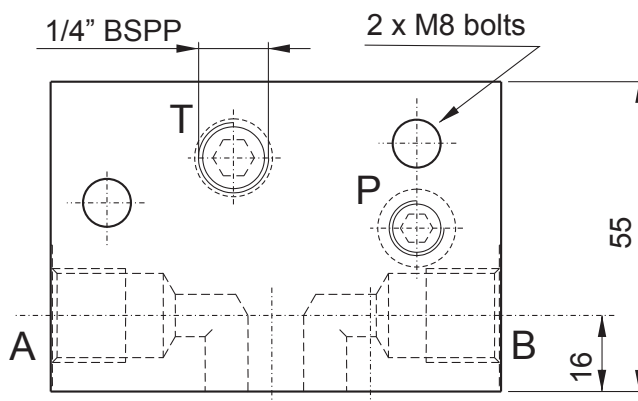
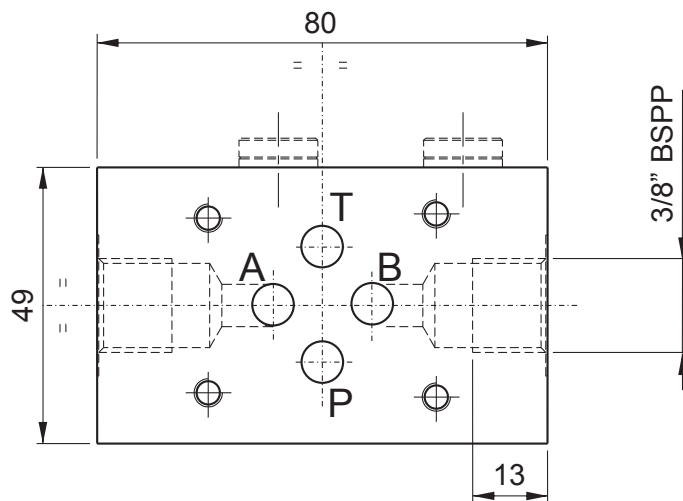
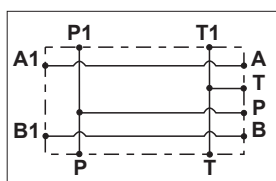
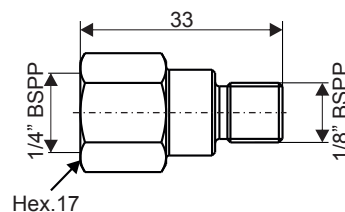


## CETOP 3 MODULAR MANIFOLDS. LATERAL PORTS

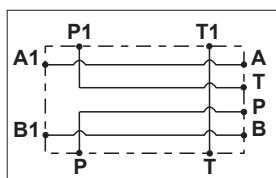


Weight: 0,56 kg  
 Fixing system: 2xM8 tie-rods  
 steel class 8.8 or above

**Option P port:**  
 P port for modular blocks



<i>Parallel connection</i>	<i>Spare part code</i>
<b>Lateral ports</b>	<b>E60403010</b>



<i>Serial connection</i>	<i>Spare part code</i>
<b>Lateral ports</b>	<b>E60403011</b>

Note: to add external manifolds to PPC assembly code, just add their spare part codes at the end of PPC code. Ex: PPC-0,8 12DC-UA-J-G1,1-D/280-G-1,5L+E60403004+E60403010

The Cetop attachment is on motor side. With AC motor frames bigger than 71, always add a spacer manifold E60403004 (see next page) below the Cetop manifold to avoid interference between the Cetop valve and the motor.

Recommended tightening torque for M8 bolts: 16 Nm